

Product datasheet for **TA371848**

ALPK2 Rabbit Polyclonal Antibody

Product data:

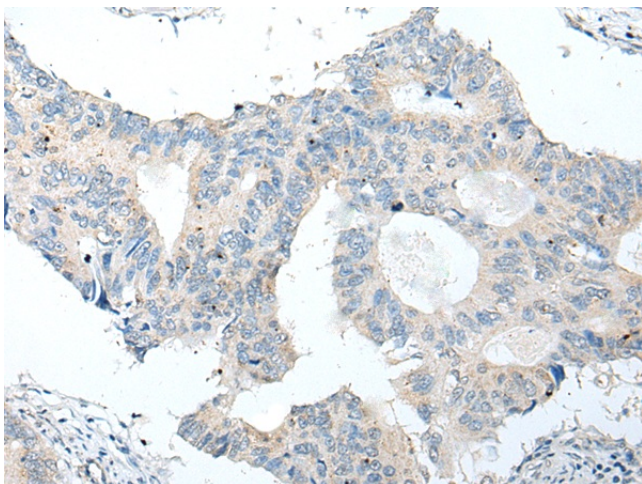
| | |
|-----------------------|--|
| Product Type: | Primary Antibodies |
| Applications: | IHC |
| Recommended Dilution: | IHC: 20-100 Positive control: Human colorectal cancer Predicted cell location: Cytoplasm |
| Reactivity: | Human |
| Host: | Rabbit |
| Isotype: | IgG |
| Clonality: | Polyclonal |
| Immunogen: | Synthetic peptide of human ALPK2 |
| Formulation: | pH7.4 PBS, 0.05% NaN ₃ , 40% Glycerol |
| Concentration: | lot specific |
| Purification: | Antigen affinity purification |
| Conjugation: | Unconjugated |
| Storage: | Store at -20°C. |
| Stability: | 1 year |
| Gene Name: | alpha kinase 2 |
| Database Link: | Entrez Gene 115701 Human Q86TB3 |

Background: The phosphorylation and dephosphorylation of proteins on serine and threonine residues is an essential means of regulating a broad range of cellular functions in eukaryotes, including cell division, homeostasis and apoptosis. α -protein kinase 2, also known as ALPK2 or HAK (Heart α -protein kinase), is a 2,170 amino acid member of the protein kinase superfamily and contains one α -type protein kinase domain and one Ig-like domain. Expressed at higher levels in heart tissue, α -protein kinase 2 recognizes and phosphorylates specific phosphorylation sites that are surrounded by peptides which have an α -helical conformation, possibly playing a role in vesicle trafficking.

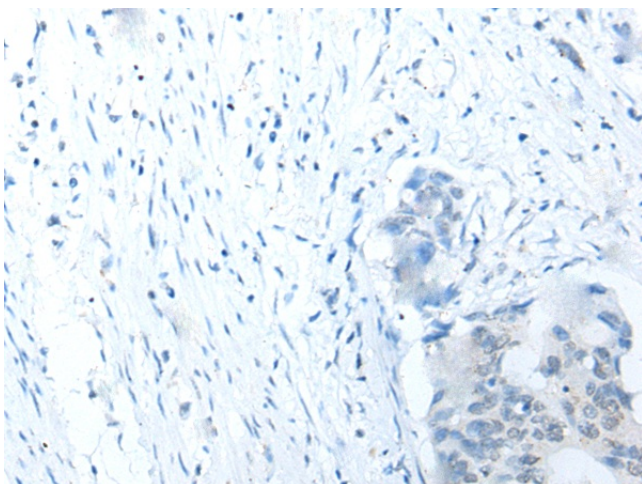
Synonyms: FLJ34875; FLJ43253; HAK



[View online »](#)

Product images:

Immunohistochemistry of paraffin-embedded Human colorectal cancer tissue using TA371848 (ALPK2 Antibody) at dilution 1/20 (Original magnification: $\times 200$)



Immunohistochemistry of paraffin-embedded Human colorectal cancer tissue using TA371848 (ALPK2 Antibody) at dilution 1/20, treated with synthetic peptide. (Original magnification: $\times 200$)