

## Product datasheet for **TA371846S**

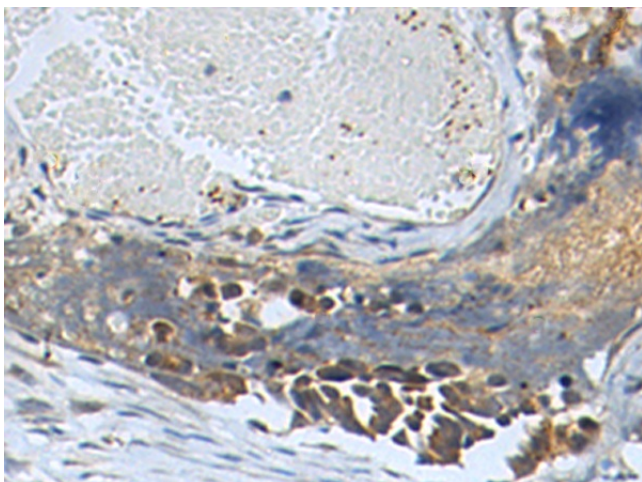
### **MCT7 (SLC16A6) Rabbit Polyclonal Antibody**

#### **Product data:**

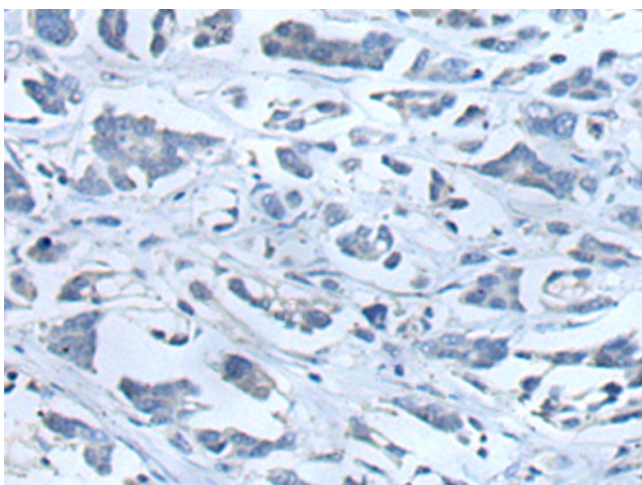
Product Type:	Primary Antibodies
Applications:	IHC
Recommended Dilution:	IHC: 50-100 Positive control: Human colorectal cancer Predicted cell location: Cytoplasm
Reactivity:	Human
Host:	Rabbit
Isotype:	IgG
Clonality:	Polyclonal
Immunogen:	Synthetic peptide of human SLC16A6
Formulation:	pH7.4 PBS, 0.05% NaN <sub>3</sub> , 40% Glycerol
Concentration:	lot specific
Purification:	Antigen affinity purification
Conjugation:	Unconjugated
Storage:	Store at -20°C.
Stability:	1 year
Gene Name:	solute carrier family 16 member 6
Database Link:	<a href="#">Entrez Gene 9120 Human</a> <a href="#">O15403</a>
Background:	Proton-linked monocarboxylate transporter. Catalyzes the rapid transport across the plasma membrane of many monocarboxylates such as lactate, pyruvate, branched-chain oxo acids derived from leucine, valine and isoleucine, and the ketone bodies acetoacetate, beta-hydroxybutyrate and acetate.
Synonyms:	MCT6; MCT7

[View online »](#)

## Product images:



Immunohistochemistry of paraffin-embedded Human colorectal cancer tissue using [TA371846] (SLC16A6 Antibody) at dilution 1/45 (Original magnification: ×200)



Immunohistochemistry of paraffin-embedded Human colorectal cancer tissue using [TA371846] (SLC16A6 Antibody) at dilution 1/45, treated with synthetic peptide. (Original magnification: ×200)