

Product datasheet for **TA371828S**

PRH2 Rabbit Polyclonal Antibody

Product data:

Product Type:	Primary Antibodies
Applications:	IHC, WB
Recommended Dilution:	WB: 200-1000 WB positive control: HEPG2 cell IHC: 25-100 Positive control: Human thyroid cancer Predicted cell location: Secreted
Reactivity:	Human
Host:	Rabbit
Isotype:	IgG
Clonality:	Polyclonal
Immunogen:	Synthetic peptide of human PRH2
Formulation:	pH7.4 PBS, 0.05% NaN ₃ , 40% Glycerol
Concentration:	lot specific
Purification:	Antigen affinity purification
Conjugation:	Unconjugated
Storage:	Store at -20°C.
Stability:	1 year
Predicted Protein Size:	17 kDa
Gene Name:	proline-rich protein HaeIII subfamily 2
Database Link:	Entrez Gene 5555 Human P02810



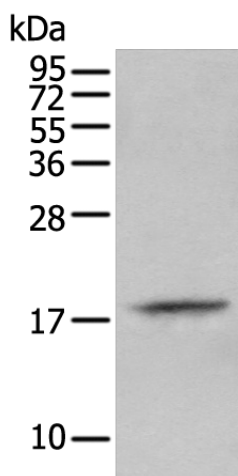
[View online »](#)

Background:

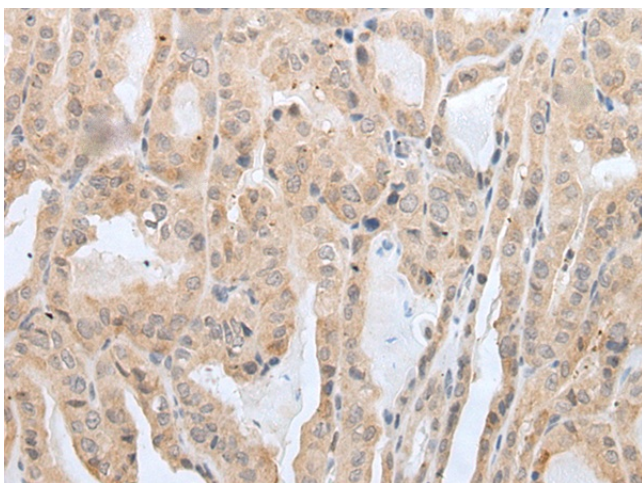
PRH1 (acidic salivary proline-rich protein, HaellI type, 1) and PRH2 (acidic salivary proline-rich protein, HaellI type, 2), contain repeated cleavage sites for the restriction enzyme HaellI and code for PRPs. PRH1/2, also known as salivary acidic proline-rich phosphoprotein 1/2, PRP-1/PRP-2 or parotid proline-rich protein 1/2, is a 166 amino acid secreted protein that functions as a highly potent inhibitor of calcium phosphate crystal growth. Similar to other PRPs, PRH1/2 provides a protective and reparative environment for dental enamel, which is important for teeth integrity.

Synonyms:

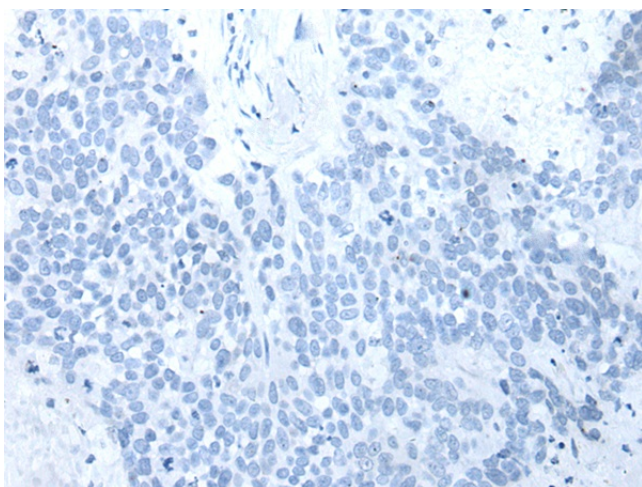
Db-s; DKFZp686B01256; DKFZp686F14256; DKFZp686I11251; DKFZp686J06255; DKFZp686L01253; DKFZp686L16244; DKFZp686M04243; DKFZp686N24248; Pa; PIF-S; Pr; Pr1/Pr2; PRP-1/PRP-2

Product images:

Gel: 12%SDS-PAGE
Lysate: 40 µg
Lane: HEPG2 cell
Primary antibody: [TA371828] (PRH2 Antibody) at dilution 1/350
Secondary antibody: Goat anti rabbit IgG at 1/8000 dilution
Exposure time: 2 minutes



Immunohistochemistry of paraffin-embedded Human thyroid cancer tissue using [TA371828] (PRH2 Antibody) at dilution 1/30 (Original magnification: ×200)



Immunohistochemistry of paraffin-embedded Human thyroid cancer tissue using [TA371828] (PRH2 Antibody) at dilution 1/30, treated with synthetic peptide. (Original magnification: ×200)