

Product datasheet for **TA371825**

HPSE2 Rabbit Polyclonal Antibody

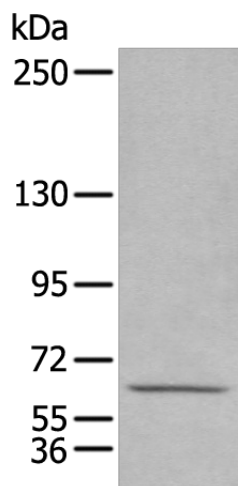
Product data:

Product Type:	Primary Antibodies
Applications:	IHC, WB
Recommended Dilution:	WB: 200-1000 WB positive control: LO2 cell IHC: 25-100 Positive control: Human tonsil Predicted cell location: Cytoplasm and Cell membrane
Reactivity:	Human, Mouse
Host:	Rabbit
Isotype:	IgG
Clonality:	Polyclonal
Immunogen:	Synthetic peptide of human HPSE2
Formulation:	pH7.4 PBS, 0.05% NaN ₃ , 40% Glycerol
Concentration:	lot specific
Purification:	Antigen affinity purification
Conjugation:	Unconjugated
Storage:	Store at -20°C.
Stability:	1 year
Predicted Protein Size:	67 kDa
Gene Name:	heparanase 2 (inactive)
Database Link:	Entrez Gene 60495 Human Q8WWQ2
Background:	This gene encodes a heparanase enzyme. The encoded protein is a endoglycosidase that degrades heparin sulfate proteoglycans located on the extracellular matrix and cell surface. This protein may be involved in biological processes involving remodeling of the extracellular matrix including angiogenesis and tumor progression. Alternate splicing results in multiple transcript variants.
Synonyms:	FLJ11684; FLJ44022; HPA2; HPR2; MGC133234

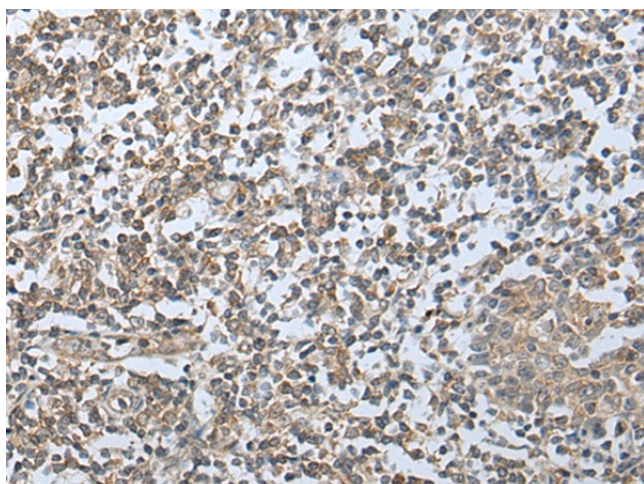


[View online »](#)

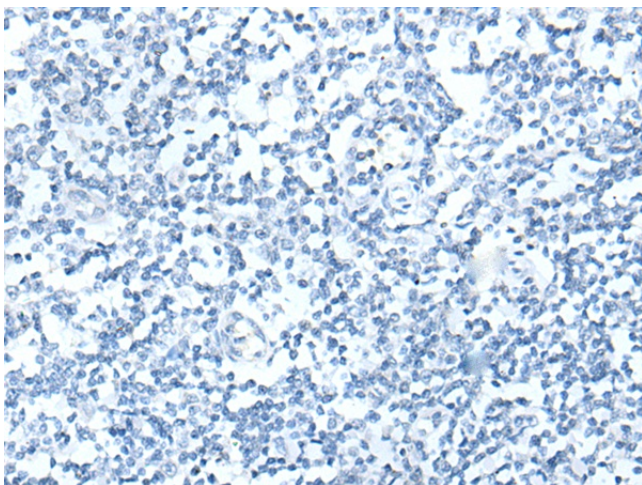
Product images:



Gel: 6%SDS-PAGE
Lysate: 40 μ g
Lane: LO2 cell
Primary antibody: TA371825 (HPSE2 Antibody) at dilution 1/200
Secondary antibody: Goat anti rabbit IgG at 1/8000 dilution
Exposure time: 1 minute



Immunohistochemistry of paraffin-embedded Human tonsil tissue using TA371825 (HPSE2 Antibody) at dilution 1/25 (Original magnification: \times 200)



Immunohistochemistry of paraffin-embedded Human tonsil tissue using TA371825 (HPSE2 Antibody) at dilution 1/25, treated with synthetic peptide. (Original magnification: x200)