

Product datasheet for **TA371818S**

Factor H (CFH) Rabbit Polyclonal Antibody

Product data:

| | |
|-------------------------|--|
| Product Type: | Primary Antibodies |
| Applications: | WB |
| Recommended Dilution: | WB: 200-1000 WB positive control: Human plasma solution |
| Reactivity: | Human |
| Host: | Rabbit |
| Isotype: | IgG |
| Clonality: | Polyclonal |
| Immunogen: | Synthetic peptide of human CFH |
| Formulation: | pH7.4 PBS, 0.05% NaN ₃ , 40% Glycerol |
| Concentration: | lot specific |
| Purification: | Antigen affinity purification |
| Conjugation: | Unconjugated |
| Storage: | Store at -20°C. |
| Stability: | 1 year |
| Predicted Protein Size: | 139 kDa |
| Gene Name: | complement factor H |
| Database Link: | Entrez Gene 3075 Human P08603 |

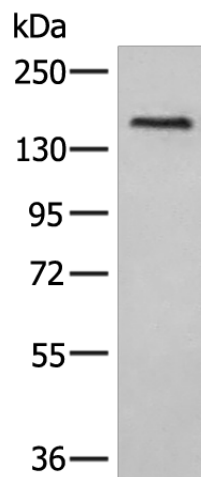
Background: This gene is a member of the Regulator of Complement Activation (RCA) gene cluster and encodes a protein with twenty short consensus repeat (SCR) domains. This protein is secreted into the bloodstream and has an essential role in the regulation of complement activation, restricting this innate defense mechanism to microbial infections. Mutations in this gene have been associated with hemolytic-uremic syndrome (HUS) and chronic hypocomplementemic nephropathy. Alternate transcriptional splice variants, encoding different isoforms, have been characterized.

Synonyms: AHUS1; ARMD4; ARMS1; beta-1-H-globulin; beta-1H; CFHL3; FH; FHL1; HF; HF1; HF2; HUS; MGC88246



[View online »](#)

Product images:



Gel: 6%SDS-PAGE
Lysate: 40 μ g
Lane: Human plasma solution
Primary antibody: [TA371818] (CFH Antibody) at dilution 1/300
Secondary antibody: Goat anti rabbit IgG at 1/8000 dilution
Exposure time: 1 minute