

Product datasheet for **TA371809S**

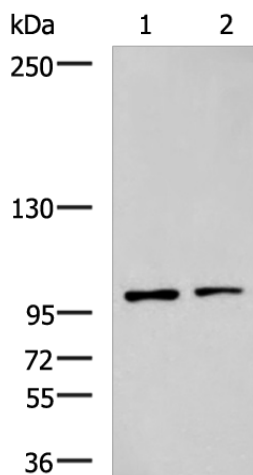
GLI1 Rabbit Polyclonal Antibody

Product data:

Product Type:	Primary Antibodies
Applications:	IHC, WB
Recommended Dilution:	WB: 500-2000 WB positive control: Raji and HepG2 cell lysates IHC: 50-100 Positive control: Human esophagus cancer Predicted cell location: Nucleus
Reactivity:	Human, Mouse
Host:	Rabbit
Isotype:	IgG
Clonality:	Polyclonal
Immunogen:	Synthetic peptide of human GLI1
Formulation:	pH7.4 PBS, 0.05% NaN ₃ , 40% Glycerol
Concentration:	lot specific
Purification:	Antigen affinity purification
Conjugation:	Unconjugated
Storage:	Store at -20°C.
Stability:	1 year
Predicted Protein Size:	118 kDa
Gene Name:	GLI family zinc finger 1
Database Link:	Entrez Gene 2735 Human P08151
Background:	This gene encodes a member of the Kruppel family of zinc finger proteins. The encoded transcription factor is activated by the sonic hedgehog signal transduction cascade and regulates stem cell proliferation. The activity and nuclear localization of this protein is negatively regulated by p53 in an inhibitory loop. Multiple transcript variants encoding different isoforms have been found for this gene.
Synonyms:	GLI



[View online »](#)

Product images:

Gel: 6%SDS-PAGE

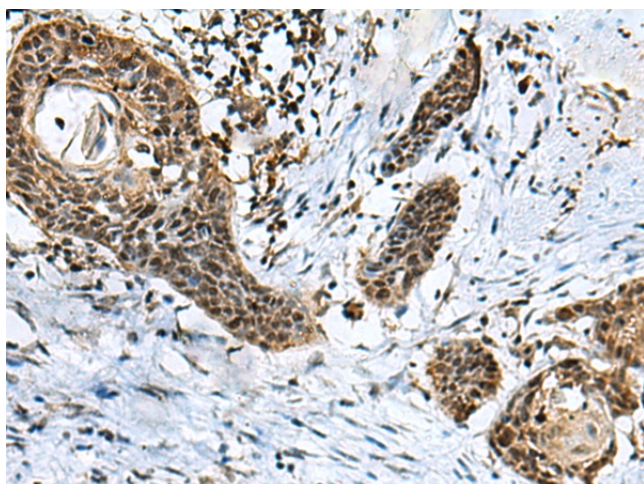
Lysate: 40 μ g

Lane 1-2: Raji and HepG2 cell lysates

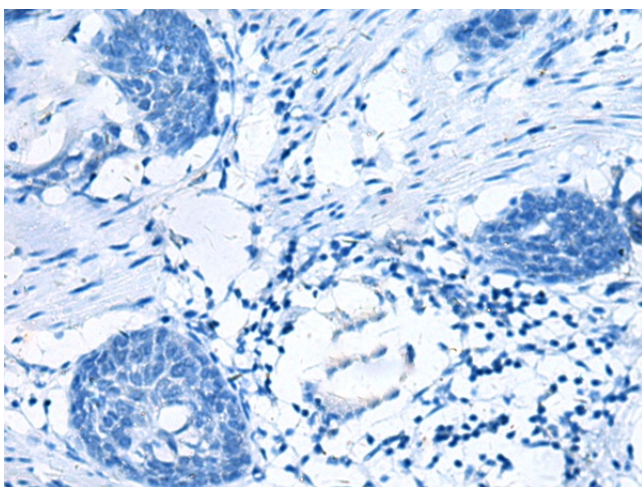
Primary antibody: [TA371809] (GLI1 Antibody) at dilution 1/900

Secondary antibody: Goat anti rabbit IgG at 1/5000 dilution

Exposure time: 1 minute



Immunohistochemistry of paraffin-embedded Human esophagus cancer tissue using [TA371809] (GLI1 Antibody) at dilution 1/40 (Original magnification: \times 200)



Immunohistochemistry of paraffin-embedded Human esophagus cancer tissue using [TA371809] (GLI1 Antibody) at dilution 1/40, treated with synthetic peptide. (Original magnification: ×200)