

Product datasheet for **TA371804S**

Glypican 5 (GPC5) Rabbit Polyclonal Antibody

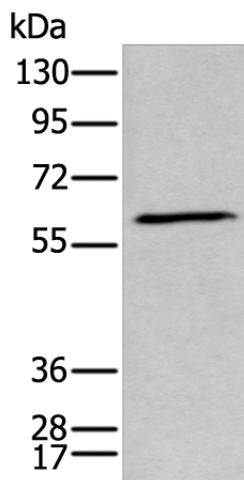
Product data:

Product Type:	Primary Antibodies
Applications:	WB
Recommended Dilution:	WB: 500-2000 WB positive control: Human fetal brain tissue lysate
Reactivity:	Human
Host:	Rabbit
Isotype:	IgG
Clonality:	Polyclonal
Immunogen:	Synthetic peptide of human GPC5
Formulation:	pH7.4 PBS, 0.05% NaN ₃ , 40% Glycerol
Concentration:	lot specific
Purification:	Antigen affinity purification
Conjugation:	Unconjugated
Storage:	Store at -20°C.
Stability:	1 year
Predicted Protein Size:	64 kDa
Gene Name:	glypican 5
Database Link:	Entrez Gene 2262 Human P78333
Background:	Cell surface heparan sulfate proteoglycans are composed of a membrane-associated protein core substituted with a variable number of heparan sulfate chains. Members of the glypican-related integral membrane proteoglycan family (GRIPS) contain a core protein anchored to the cytoplasmic membrane via a glycosyl phosphatidylinositol linkage. These proteins may play a role in the control of cell division and growth regulation.
Synonyms:	bA93M14.1



[View online »](#)

Product images:



Gel: 6%SDS-PAGE

Lysate: 40 μ g

Lane: Human fetal brain tissue lysate

Primary antibody: [TA371804] (GPC5 Antibody) at dilution 1/450

Secondary antibody: Goat anti rabbit IgG at 1/8000 dilution

Exposure time: 1 minute