

## Product datasheet for **TA371799S**

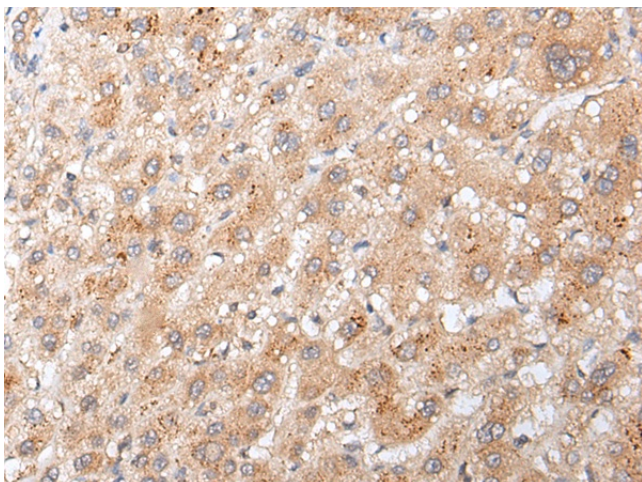
### **GADD45GIP1 Rabbit Polyclonal Antibody**

#### **Product data:**

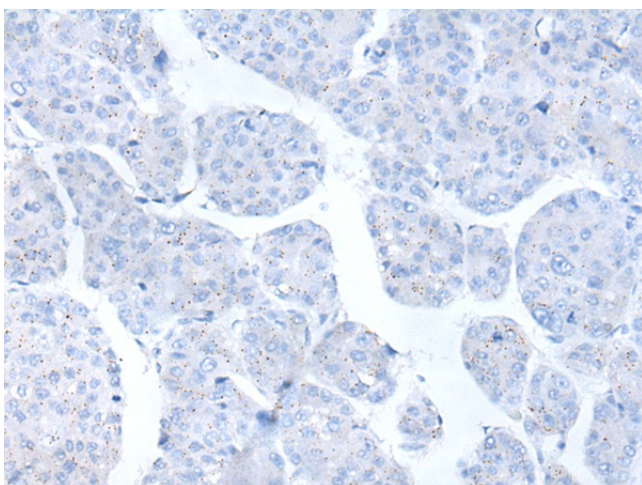
Product Type:	Primary Antibodies
Applications:	IHC
Recommended Dilution:	IHC: 25-100 Positive control: Human liver cancer Predicted cell location: Cytoplasm or Nucleus
Reactivity:	Human
Host:	Rabbit
Isotype:	IgG
Clonality:	Polyclonal
Immunogen:	Synthetic peptide of human GADD45GIP1
Formulation:	pH7.4 PBS, 0.05% NaN <sub>3</sub> , 40% Glycerol
Concentration:	lot specific
Purification:	Antigen affinity purification
Conjugation:	Unconjugated
Storage:	Store at -20°C.
Stability:	1 year
Gene Name:	GADD45G interacting protein 1
Database Link:	<a href="#">Entrez Gene 90480 Human Q8TAE8</a>
Background:	This gene encodes a nuclear-localized protein that may be induced by p53 and regulates the cell cycle by inhibiting G1 to S phase progression. The encoded protein may interact with other cell cycle regulators.
Synonyms:	CKBBP2; CRIF1; MGC4667; MGC4758; PLINP-1; Plinp1; PRG6



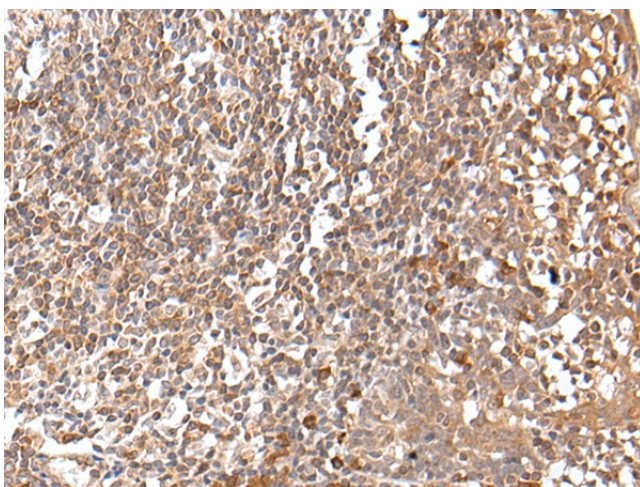
[View online »](#)

**Product images:**


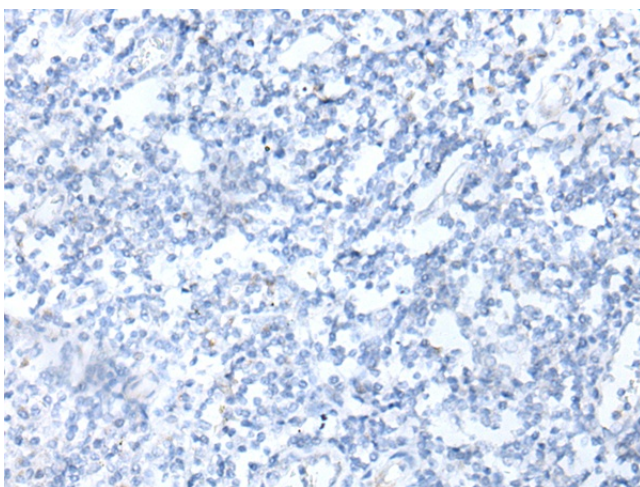
Immunohistochemistry of paraffin-embedded Human liver cancer tissue using [TA371799] (GADD45GIP1 Antibody) at dilution 1/20 (Original magnification:  $\times 200$ )



Immunohistochemistry of paraffin-embedded Human liver cancer tissue using [TA371799] (GADD45GIP1 Antibody) at dilution 1/20, treated with synthetic peptide. (Original magnification:  $\times 200$ )



Immunohistochemistry of paraffin-embedded Human tonsil tissue using [TA371799] (GADD45GIP1 Antibody) at dilution 1/20 (Original magnification: ×200)



Immunohistochemistry of paraffin-embedded Human tonsil tissue using [TA371799] (GADD45GIP1 Antibody) at dilution 1/20, treated with synthetic peptide. (Original magnification: ×200)