

Product datasheet for **TA371791S**

TBX3 Rabbit Polyclonal Antibody

Product data:

| | |
|-------------------------|---|
| Product Type: | Primary Antibodies |
| Applications: | IHC, WB |
| Recommended Dilution: | WB: 500-2000 WB positive control: HepG2 cell lysate IHC: 50-100 Positive control: Human gastric cancer Predicted cell location: Nucleus |
| Reactivity: | Human, Mouse, Rat |
| Host: | Rabbit |
| Isotype: | IgG |
| Clonality: | Polyclonal |
| Immunogen: | Synthetic peptide of human TBX3 |
| Formulation: | pH7.4 PBS, 0.05% NaN ₃ , 40% Glycerol |
| Concentration: | lot specific |
| Purification: | Antigen affinity purification |
| Conjugation: | Unconjugated |
| Storage: | Store at -20°C. |
| Stability: | 1 year |
| Predicted Protein Size: | 79 kDa |
| Gene Name: | T-box 3 |
| Database Link: | Entrez Gene 6926 Human O15119 |



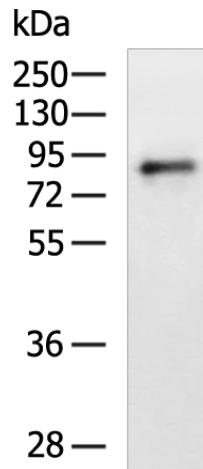
[View online »](#)

Background:

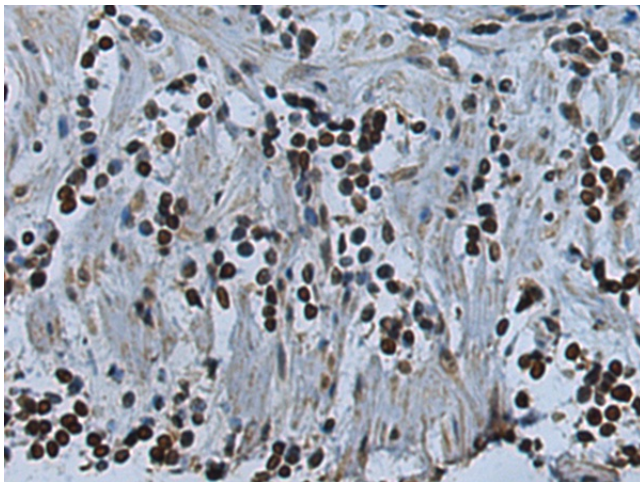
This gene is a member of a phylogenetically conserved family of genes that share a common DNA-binding domain, the T-box. T-box genes encode transcription factors involved in the regulation of developmental processes. This protein is a transcriptional repressor and is thought to play a role in the anterior/posterior axis of the tetrapod forelimb. Mutations in this gene cause ulnar-mammary syndrome, affecting limb, apocrine gland, tooth, hair, and genital development. Alternative splicing of this gene results in three transcript variants encoding different isoforms; however, the full length nature of one variant has not been determined.

Synonyms:

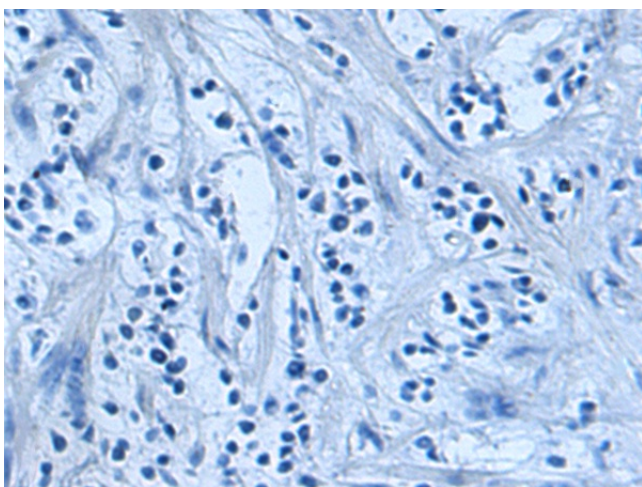
D5Erttd189e

Product images:

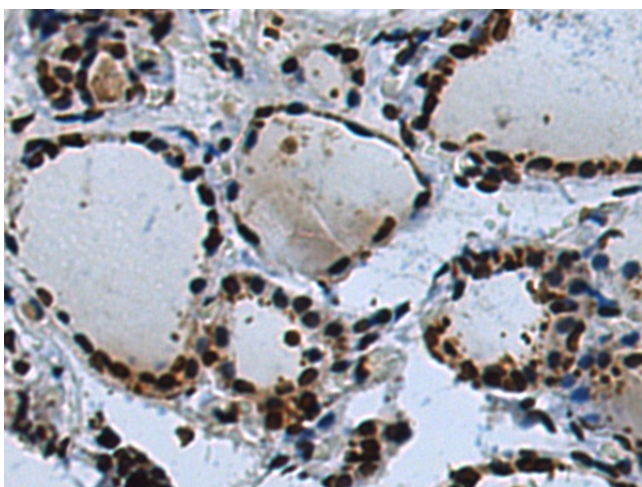
Gel: 6%SDS-PAGE
Lysate: 40 µg
Lane: HepG2 cell lysate
Primary antibody: [TA371791] (TBX3 Antibody) at dilution 1/800
Secondary antibody: Goat anti rabbit IgG at 1/5000 dilution
Exposure time: 2 minutes



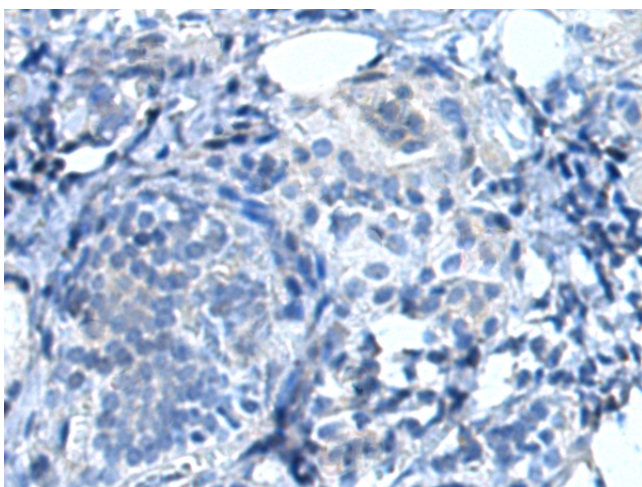
Immunohistochemistry of paraffin-embedded Human gastric cancer tissue using [TA371791] (TBX3 Antibody) at dilution 1/35 (Original magnification: ×200)



Immunohistochemistry of paraffin-embedded Human gastric cancer tissue using [TA371791] (TBX3 Antibody) at dilution 1/35, treated with synthetic peptide. (Original magnification: ×200)



Immunohistochemistry of paraffin-embedded Human thyroid cancer tissue using [TA371791] (TBX3 Antibody) at dilution 1/35 (Original magnification: ×200)



Immunohistochemistry of paraffin-embedded Human thyroid cancer tissue using [TA371791] (TBX3 Antibody) at dilution 1/35, treated with synthetic peptide. (Original magnification: ×200)