

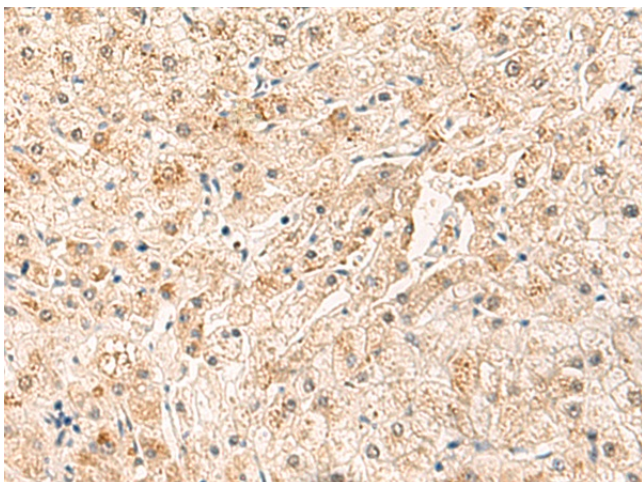
Product datasheet for **TA371780S**

SYT16 Rabbit Polyclonal Antibody

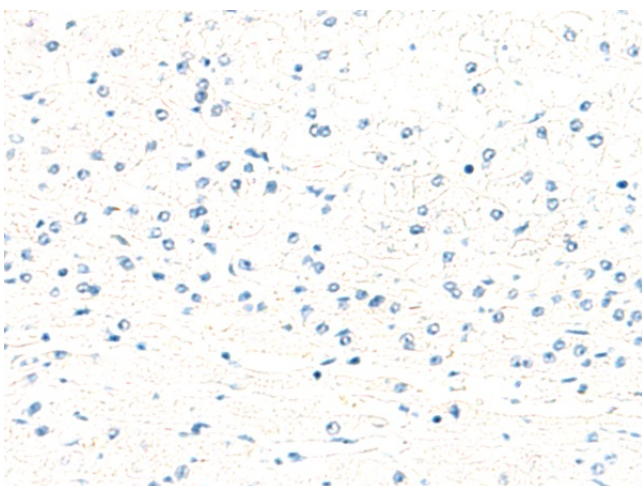
Product data:

| | |
|-----------------------|--|
| Product Type: | Primary Antibodies |
| Applications: | IHC |
| Recommended Dilution: | IHC: 25-100 Positive control: Human liver cancer Predicted cell location: Cytoplasm |
| Reactivity: | Human, Mouse |
| Host: | Rabbit |
| Isotype: | IgG |
| Clonality: | Polyclonal |
| Immunogen: | Synthetic peptide of human SYT16 |
| Formulation: | pH7.4 PBS, 0.05% NaN ₃ , 40% Glycerol |
| Concentration: | lot specific |
| Purification: | Antigen affinity purification |
| Conjugation: | Unconjugated |
| Storage: | Store at -20°C. |
| Stability: | 1 year |
| Gene Name: | synaptotagmin 16 |
| Database Link: | Entrez Gene 83851 Human Q17RD7 |
| Background: | May be involved in the trafficking and exocytosis of secretory vesicles in non-neuronal tissues. Is Ca ²⁺ -independent. |
| Synonyms: | CHR14SYT; Strep14; SYT14L; syt14r; yt14r |

[View online »](#)

Product images:


Immunohistochemistry of paraffin-embedded Human liver cancer tissue using [TA371780] (SYT16 Antibody) at dilution 1/30 (Original magnification: ×200)



Immunohistochemistry of paraffin-embedded Human liver cancer tissue using [TA371780] (SYT16 Antibody) at dilution 1/30, treated with synthetic peptide. (Original magnification: ×200)