

## Product datasheet for **TA371773**

### SMARCA1 Rabbit Polyclonal Antibody

#### Product data:

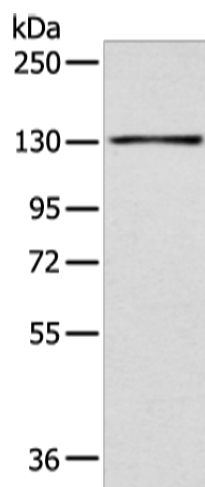
Product Type:	Primary Antibodies
Applications:	IHC, WB
Recommended Dilution:	WB: 500-2000 WB positive control: 293T cell IHC: 25-100 Positive control: Human gastric cancer Predicted cell location: Nucleus
Reactivity:	Human, Mouse
Host:	Rabbit
Isotype:	IgG
Clonality:	Polyclonal
Immunogen:	Synthetic peptide of human SMARCA1
Formulation:	pH7.4 PBS, 0.05% NaN <sub>3</sub> , 40% Glycerol
Concentration:	lot specific
Purification:	Antigen affinity purification
Conjugation:	Unconjugated
Storage:	Store at -20°C.
Stability:	1 year
Predicted Protein Size:	123 kDa
Gene Name:	SWI/SNF related, matrix associated, actin dependent regulator of chromatin, subfamily a, member 1
Database Link:	<a href="#">Entrez Gene 6594 Human P28370</a>
Background:	This gene encodes a member of the SWI/SNF family of proteins. The encoded protein is an ATPase which is expressed in diverse tissues and contributes to the chromatin remodeling complex that is involved in transcription. The protein may also play a role in DNA damage, growth inhibition and apoptosis of cancer cells. Alternative splicing results in multiple transcript variants.



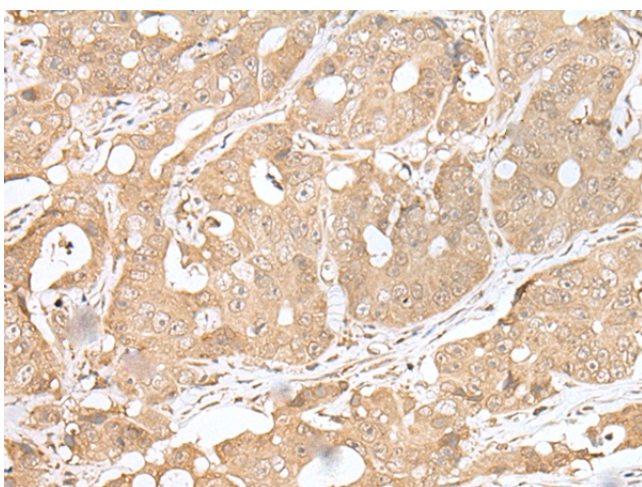
[View online »](#)

Synonyms: DKFZp686D1623; FLJ41547; ISWI; NURF140; OTTHUMP00000023983; SNF2L; SNF2L1; SNF2LB; SWI; SWI2

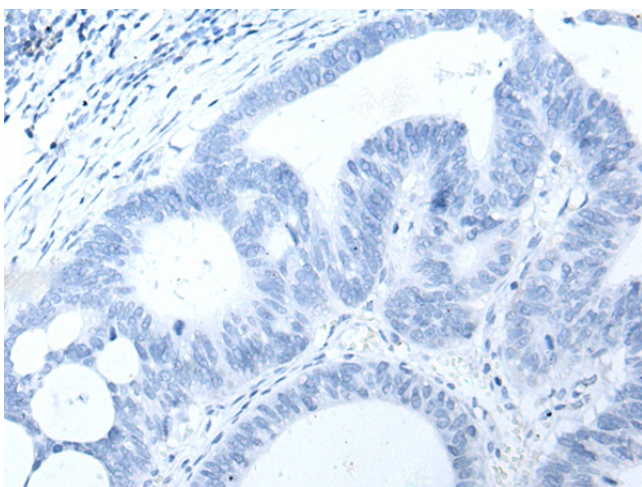
### Product images:



Gel: 6%SDS-PAGE  
Lysate: 40  $\mu$ g  
Lane: 293T cell  
Primary antibody: TA371773 (SMARCA1 Antibody) at dilution 1/450  
Secondary antibody: Goat anti rabbit IgG at 1/8000 dilution  
Exposure time: 2 minutes



Immunohistochemistry of paraffin-embedded Human gastric cancer tissue using TA371773 (SMARCA1 Antibody) at dilution 1/30 (Original magnification:  $\times$ 200)



Immunohistochemistry of paraffin-embedded Human gastric cancer tissue using TA371773 (SMARCA1 Antibody) at dilution 1/30, treated with synthetic peptide. (Original magnification:  $\times 200$ )