

Product datasheet for **TA371772S**

P2Y4 (P2RY4) Rabbit Polyclonal Antibody

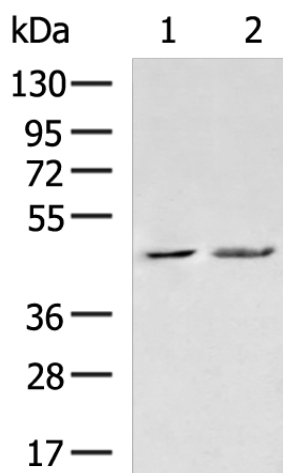
Product data:

Product Type:	Primary Antibodies
Applications:	IHC, WB
Recommended Dilution:	WB: 500-2000 WB positive control: Mouse heart tissue, A549 cell lysates IHC: 50-100 Positive control: Human tonsil Predicted cell location: Cytoplasm
Reactivity:	Human, Mouse
Host:	Rabbit
Isotype:	IgG
Clonality:	Polyclonal
Immunogen:	Synthetic peptide of human P2RY4
Formulation:	pH7.4 PBS, 0.05% NaN ₃ , 40% Glycerol
Concentration:	lot specific
Purification:	Antigen affinity purification
Conjugation:	Unconjugated
Storage:	Store at -20°C.
Stability:	1 year
Predicted Protein Size:	41 kDa
Gene Name:	pyrimidinergic receptor P2Y4
Database Link:	Entrez Gene 5030 Human P51582
Background:	The product of this gene belongs to the family of G-protein coupled receptors. This family has several receptor subtypes with different pharmacological selectivity, which overlaps in some cases, for various adenosine and uridine nucleotides. This receptor is responsive to uridine nucleotides, partially responsive to ATP, and not responsive to ADP.
Synonyms:	NRU; P2P; P2Y4; UNR

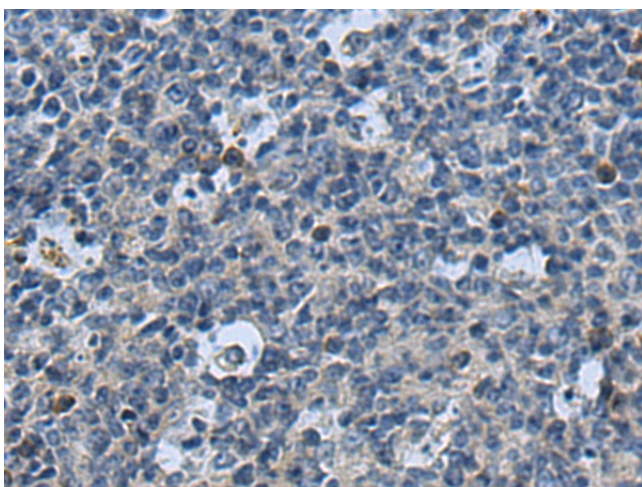


[View online »](#)

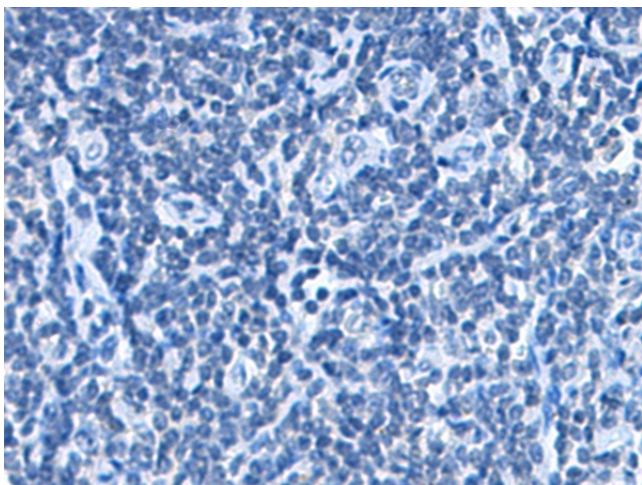
Product images:



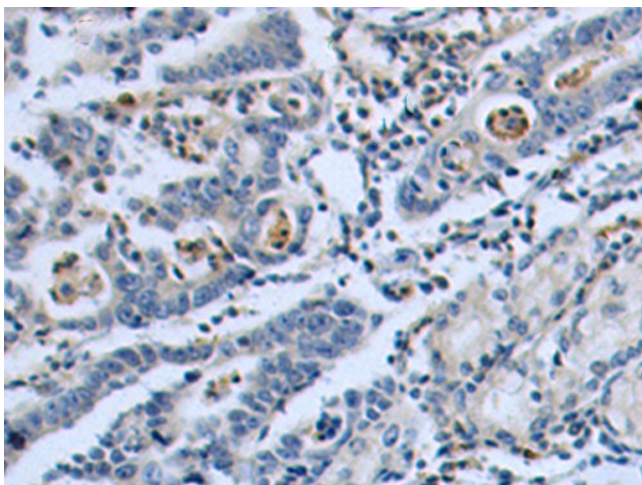
Gel: 8%SDS-PAGE
Lysate: 40 μ g
Lane 1-2: Mouse heart tissue
A549 cell lysates
Primary antibody: [TA371772] (P2RY4 Antibody)
at dilution 1/1000
Secondary antibody: Goat anti rabbit IgG at
1/5000 dilution
Exposure time: 2 minutes



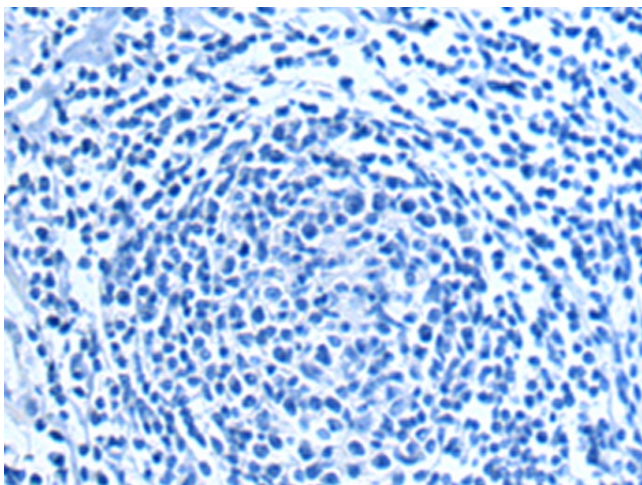
Immunohistochemistry of paraffin-embedded
Human tonsil tissue using [TA371772] (P2RY4
Antibody) at dilution 1/115 (Original
magnification: \times 200)



Immunohistochemistry of paraffin-embedded Human tonsil tissue using [TA371772] (P2RY4 Antibody) at dilution 1/115, treated with synthetic peptide. (Original magnification: $\times 200$)



Immunohistochemistry of paraffin-embedded Human gastric cancer tissue using [TA371772] (P2RY4 Antibody) at dilution 1/115 (Original magnification: $\times 200$)



Immunohistochemistry of paraffin-embedded Human gastric cancer tissue using [TA371772] (P2RY4 Antibody) at dilution 1/115, treated with synthetic peptide. (Original magnification: $\times 200$)