

Product datasheet for **TA371760S**

alpha Glucosidase II (GANAB) Rabbit Polyclonal Antibody

Product data:

Product Type:	Primary Antibodies
Applications:	WB
Recommended Dilution:	WB: 200-1000 WB positive control: HeLa A431 Hepg-2 293T and Raji cell
Reactivity:	Human, Mouse
Host:	Rabbit
Isotype:	IgG
Clonality:	Polyclonal
Immunogen:	Synthetic peptide of human GANAB
Formulation:	pH7.4 PBS, 0.05% NaN ₃ , 40% Glycerol
Concentration:	lot specific
Purification:	Antigen affinity purification
Conjugation:	Unconjugated
Storage:	Store at -20°C.
Stability:	1 year
Predicted Protein Size:	107 kDa
Gene Name:	glucosidase II alpha subunit
Database Link:	Entrez Gene 23193 Human Q14697

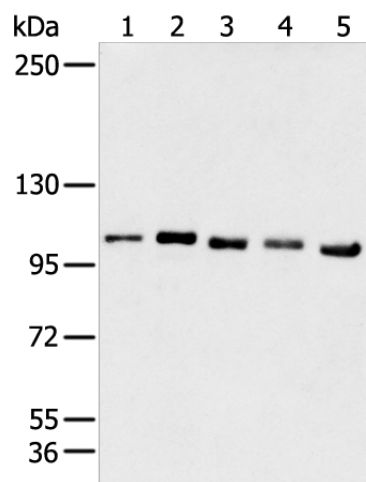
Background: Trimming of glucoses from N-linked core glycans on newly synthesized glycoproteins occurs sequentially through the action of Glucosidases I and II in the endoplasmic reticulum (ER). Glucosidase II is an ER-localized enzyme that contains a and b subunits (Glucosidase IIa and Glucosidase IIb) which form a defined heterodimeric complex. Glucosidase IIa is the catalytic core of the enzyme and can function independently of the b subunit. The sequence of Glucosidase IIb encodes protein rich in glutamic and aspartic acid with a putative ER retention signal (HDEL) at the C-terminus.

Synonyms: G2AN; GLUII; KIAA0088



[View online »](#)

Product images:



Gel: 6%SDS-PAGE

Lysate: 40 μ g

Lane 1-5: HeLa

A431

Hepg-2

293T and Raji cell

Primary antibody: [TA371760] (GANAB Antibody)
at dilution 1/200

Secondary antibody: Goat anti rabbit IgG at
1/8000 dilution

Exposure time: 15 seconds