

## Product datasheet for **TA371747S**

### Peroxiredoxin 4 (PRDX4) Rabbit Polyclonal Antibody

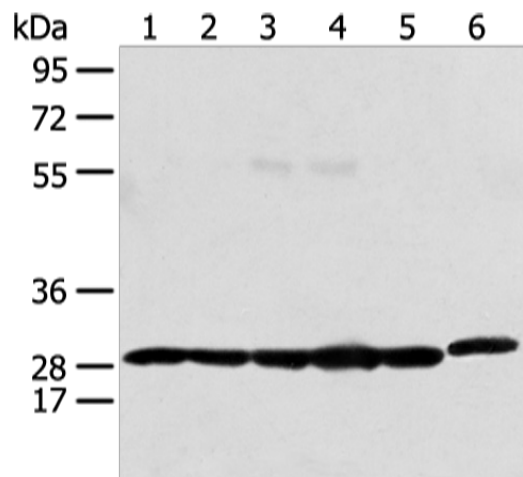
#### Product data:

Product Type:	Primary Antibodies
Applications:	IHC, WB
Recommended Dilution:	WB: 500-2000 WB positive control: MCF-7, K562, HepG2, 293T, Raji and HeLa cell IHC: 25-100 Positive control: Human cervical cancer Predicted cell location: Cytoplasm and Cell membrane
Reactivity:	Human, Mouse, Rat
Host:	Rabbit
Isotype:	IgG
Clonality:	Polyclonal
Immunogen:	Synthetic peptide of human PRDX4
Formulation:	pH7.4 PBS, 0.05% NaN <sub>3</sub> , 40% Glycerol
Concentration:	lot specific
Purification:	Antigen affinity purification
Conjugation:	Unconjugated
Storage:	Store at -20°C.
Stability:	1 year
Predicted Protein Size:	30 kDa
Gene Name:	peroxiredoxin 4
Database Link:	<a href="#">Entrez Gene 10549 Human Q13162</a>
Background:	The protein encoded by this gene is an antioxidant enzyme and belongs to the peroxiredoxin family. The protein is localized to the cytoplasm. Peroxidases of the peroxiredoxin family reduce hydrogen peroxide and alkyl hydroperoxides to water and alcohol with the use of reducing equivalents derived from thiol-containing donor molecules. This protein has been found to play a regulatory role in the activation of the transcription factor NF-kappaB.
Synonyms:	AOE37-2; PRX-4; Prx-IV

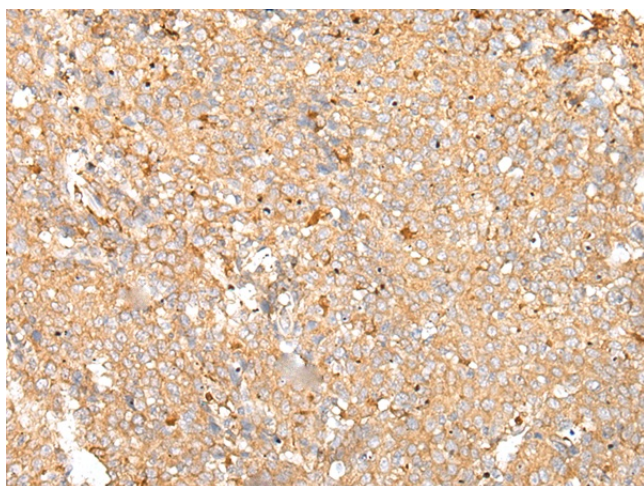


[View online >](#)

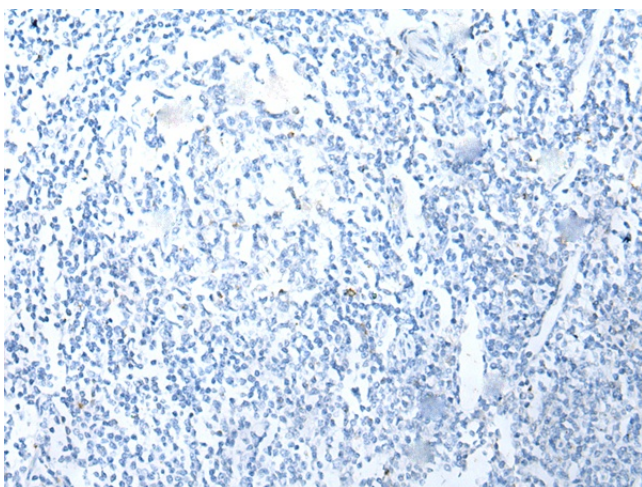
## Product images:



Gel: 8%SDS-PAGE  
Lysate: 40  $\mu$ g  
Lane 1-6: MCF-7  
K562  
HepG2  
293T  
Raji and Hela cell  
Primary antibody: [TA371747] (PRDX4 Antibody)  
at dilution 1/400  
Secondary antibody: Goat anti rabbit IgG at  
1/8000 dilution  
Exposure time: 4 seconds



Immunohistochemistry of paraffin-embedded  
Human cervical cancer tissue using [TA371747]  
(PRDX4 Antibody) at dilution 1/25 (Original  
magnification:  $\times 200$ )



Immunohistochemistry of paraffin-embedded Human cervical cancer tissue using [TA371747] (PRDX4 Antibody) at dilution 1/25, treated with synthetic peptide. (Original magnification:  $\times 200$ )