

## Product datasheet for **TA371741S**

### GRIA4 Rabbit Polyclonal Antibody

#### Product data:

|                       |   |
|-----------------------|---|
| Product Type:         | Primary Antibodies  |
| Applications:         | IHC   |
| Recommended Dilution: | IHC: 25-100<br>Positive control: Human liver cancer<br>Predicted cell location: Cell membrane |
| Reactivity:           | Human, Mouse, Rat   |
| Host:                 | Rabbit  |
| Isotype:              | IgG   |
| Clonality:            | Polyclonal  |
| Immunogen:            | Synthetic peptide of human GRIA4  |
| Formulation:          | pH7.4 PBS, 0.05% NaN <sub>3</sub> , 40% Glycerol  |
| Concentration:        | lot specific  |
| Purification:         | Antigen affinity purification   |
| Conjugation:          | Unconjugated  |
| Storage:              | Store at -20°C.   |
| Stability:            | 1 year  |
| Gene Name:            | glutamate ionotropic receptor AMPA type subunit 4   |
| Database Link:        | <a href="#">Entrez Gene 2893 Human P48058</a>   |



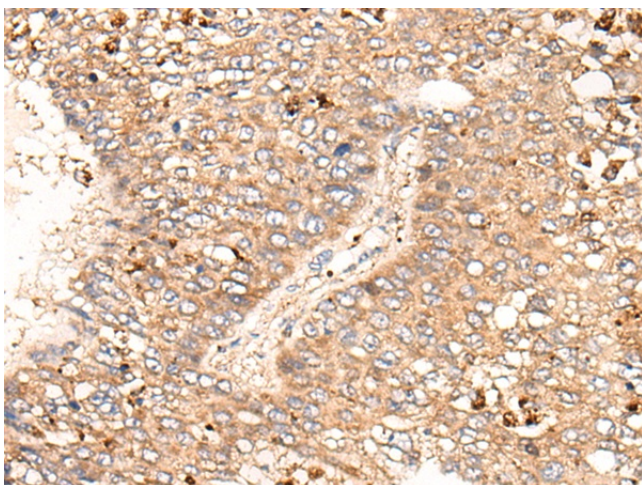
[View online »](#)

**Background:**

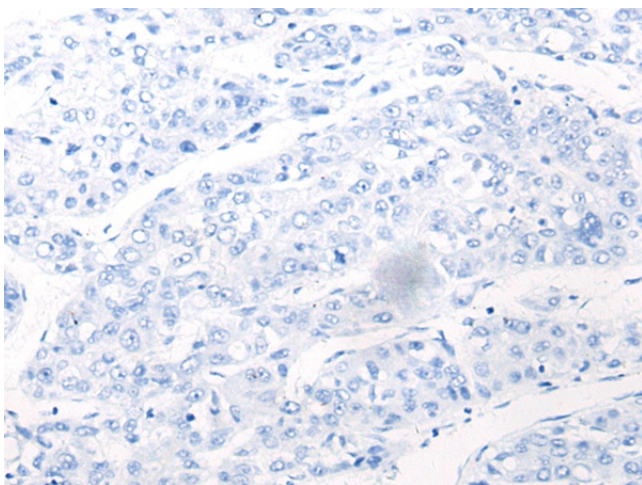
Glutamate receptors are the predominant excitatory neurotransmitter receptors in the mammalian brain and are activated in a variety of normal neurophysiologic processes. These receptors are heteromeric protein complexes composed of multiple subunits, arranged to form ligand-gated ion channels. The classification of glutamate receptors is based on their activation by different pharmacologic agonists. The subunit encoded by this gene belongs to a family of AMPA (alpha-amino-3-hydroxy-5-methyl-4-isoxazole propionate)-sensitive glutamate receptors, and is subject to RNA editing (AGA->GGA; R->G). Alternative splicing of this gene results in transcript variants encoding different isoforms, which may vary in their signal transduction properties. Some haplotypes of this gene show a positive association with schizophrenia.

**Synonyms:**

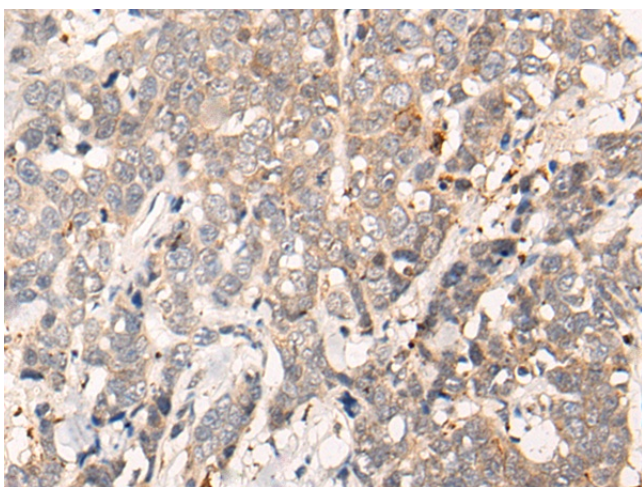
GluA4; Glur-4; GluR-D; GluR4; Glur4; Gluralpha4; spkw1

**Product images:**

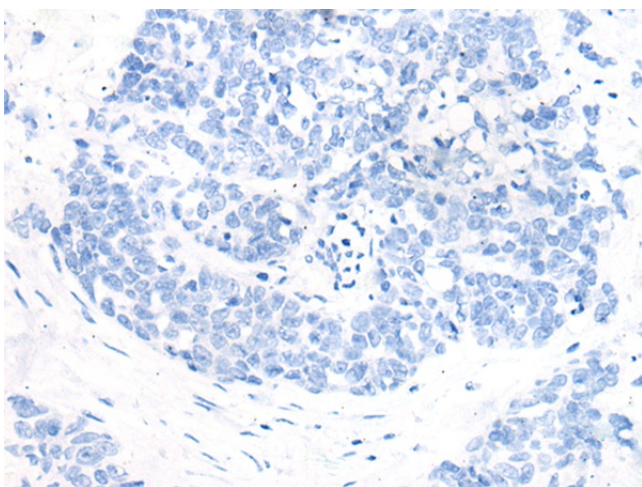
Immunohistochemistry of paraffin-embedded Human liver cancer tissue using [TA371741] (GRIA4 Antibody) at dilution 1/35 (Original magnification: x200)



Immunohistochemistry of paraffin-embedded Human liver cancer tissue using [TA371741] (GRIA4 Antibody) at dilution 1/35, treated with synthetic peptide. (Original magnification: x200)



Immunohistochemistry of paraffin-embedded Human thyroid cancer tissue using [TA371741] (GRIA4 Antibody) at dilution 1/35 (Original magnification:  $\times 200$ )



Immunohistochemistry of paraffin-embedded Human thyroid cancer tissue using [TA371741] (GRIA4 Antibody) at dilution 1/35, treated with synthetic peptide. (Original magnification:  $\times 200$ )