

## Product datasheet for **TA371736**

### MTA2 Rabbit Polyclonal Antibody

#### Product data:

Product Type:	Primary Antibodies
Applications:	IHC, WB
Recommended Dilution:	WB: 500-2000 WB positive control: NIH/3T3□A431□293T and Hela cell lysates IHC: 25-100 Positive control: Human lung cancer Predicted cell location: Nucleus
Reactivity:	Human, Mouse
Host:	Rabbit
Isotype:	IgG
Clonality:	Polyclonal
Immunogen:	Synthetic peptide of human MTA2
Formulation:	pH7.4 PBS, 0.05% NaN <sub>3</sub> , 40% Glycerol
Concentration:	lot specific
Purification:	Antigen affinity purification
Conjugation:	Unconjugated
Storage:	Store at -20°C.
Stability:	1 year
Predicted Protein Size:	75 kDa
Gene Name:	metastasis associated 1 family member 2
Database Link:	<a href="#">Entrez Gene 9219 Human O94776</a>



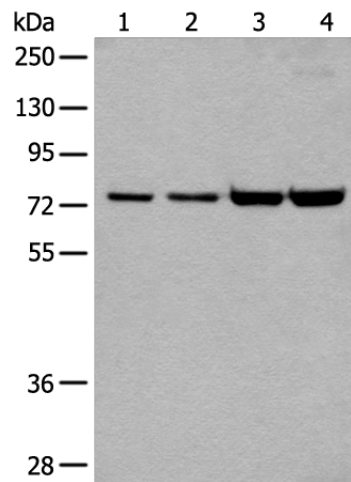
[View online »](#)

**Background:**

This gene encodes a protein that has been identified as a component of NuRD, a nucleosome remodeling deacetylase complex identified in the nucleus of human cells. It shows a very broad expression pattern and is strongly expressed in many tissues. It may represent one member of a small gene family that encode different but related proteins involved either directly or indirectly in transcriptional regulation. Their indirect effects on transcriptional regulation may include chromatin remodeling. It is closely related to another member of this family, a protein that has been correlated with the metastatic potential of certain carcinomas. These two proteins are so closely related that they share the same types of domains. These domains include two DNA binding domains, a dimerization domain, and a domain commonly found in proteins that methylate DNA. One of the proteins known to be a target protein for this gene product is p53. Deacetylation of p53 is correlated with a loss of growth inhibition in transformed cells supporting a connection between these gene family members and metastasis.

**Synonyms:**

DKFZp686F2281; MTA1-L1; MTA1L1; PID

**Product images:**

Gel: 8%SDS-PAGE

Lysate: 40 µg

Lane 1-4: NIH/3T3

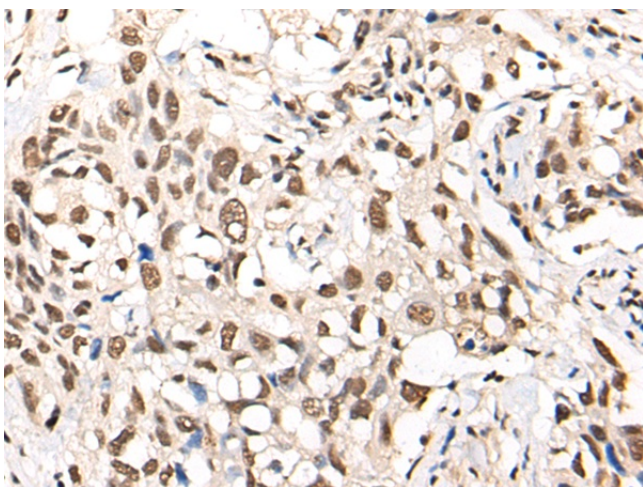
A431

293T and HeLa cell lysates

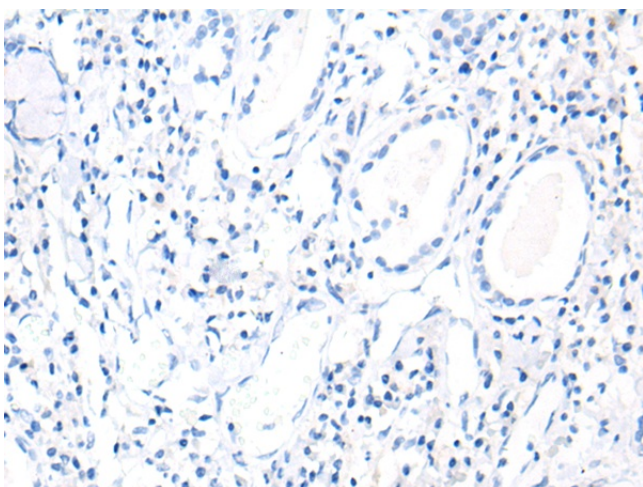
Primary antibody: TA371736 (MTA2 Antibody) at dilution 1/400

Secondary antibody: Goat anti rabbit IgG at 1/8000 dilution

Exposure time: 30 seconds



Immunohistochemistry of paraffin-embedded Human lung cancer tissue using TA371736 (MTA2 Antibody) at dilution 1/40 (Original magnification: ×200)



Immunohistochemistry of paraffin-embedded Human lung cancer tissue using TA371736 (MTA2 Antibody) at dilution 1/40, treated with synthetic peptide. (Original magnification: ×200)