

## Product datasheet for **TA371723**

### **MRG15 (MORF4L1) Rabbit Polyclonal Antibody**

#### **Product data:**

Product Type:	Primary Antibodies
Applications:	IHC, WB
Recommended Dilution:	WB: 500-2000 WB positive control: Human fetal liver tissue□Hela cell and Human fetal brain tissue IHC: 25-100 Positive control: Human lung cancer Predicted cell location: Nucleus
Reactivity:	Human, Mouse, Rat
Host:	Rabbit
Isotype:	IgG
Clonality:	Polyclonal
Immunogen:	Synthetic peptide of human MORF4L1
Formulation:	pH7.4 PBS, 0.05% NaN <sub>3</sub> , 40% Glycerol
Concentration:	lot specific
Purification:	Antigen affinity purification
Conjugation:	Unconjugated
Storage:	Store at -20°C.
Stability:	1 year
Predicted Protein Size:	41 kDa
Gene Name:	mortality factor 4 like 1
Database Link:	<a href="#">Entrez Gene 10933 Human Q9UBU8</a>



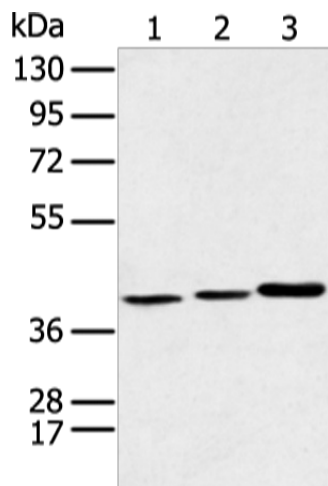
[View online »](#)

**Background:**

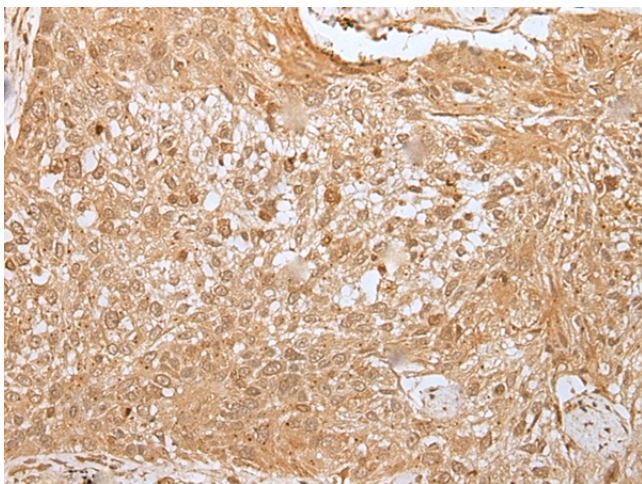
The members of the mortality factor family include mortality factor 4 (MORF4), MORF4L1 (also known as MRG15) and MORF4-related gene X (MRGX). The human MORF4 gene maps to chromosome 4q33-q34.1. MORF4 induces a senescent-like phenotype in complementation group B immortal cell lines. The genes encoding MRG15 and MRGX map to chromosomes 15q24 and Xq22, respectively. MORF4, MORF4L1 and MRGX each contain a C-terminal leucine zipper. An association between MORF4L1, Rb (retinoblastoma tumor suppressor) and PAM14 (protein associated with MORF4L1) suggests a role for MORF4L1 in transcription regulation.

**Synonyms:**

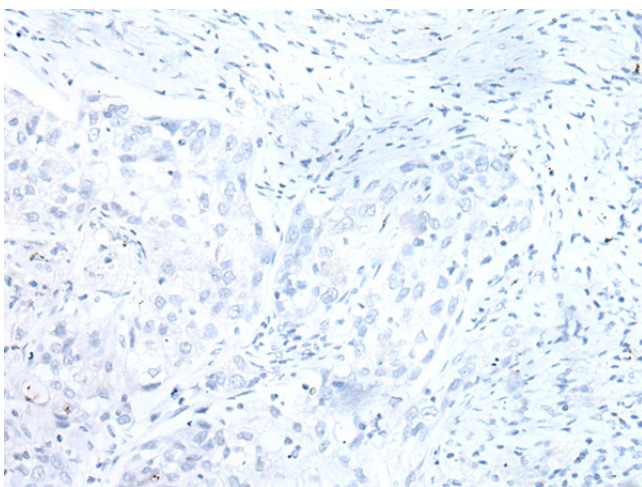
Eaf3; FWP006; HsT17725; MEAF3; MGC10631; MORFRG15; MRG15; S863-6

**Product images:**


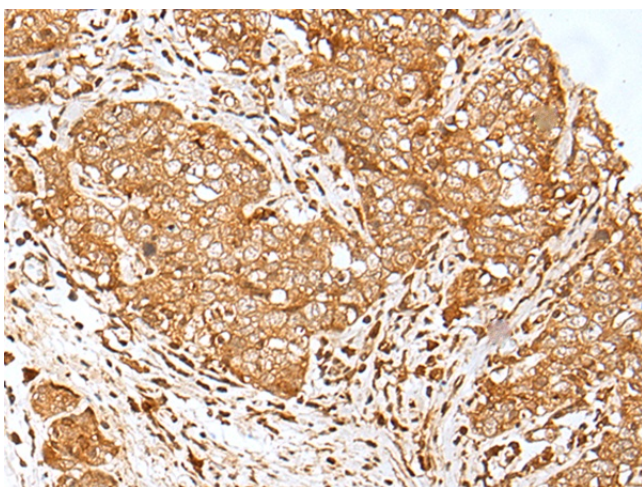
Gel: 8%SDS-PAGE  
 Lysate: 40 µg  
 Lane 1-3: Human fetal liver tissue  
 HeLa cell and Human fetal brain tissue  
 Primary antibody: TA371723 (MORF4L1 Antibody)  
 at dilution 1/350  
 Secondary antibody: Goat anti rabbit IgG at  
 1/8000 dilution  
 Exposure time: 10 seconds



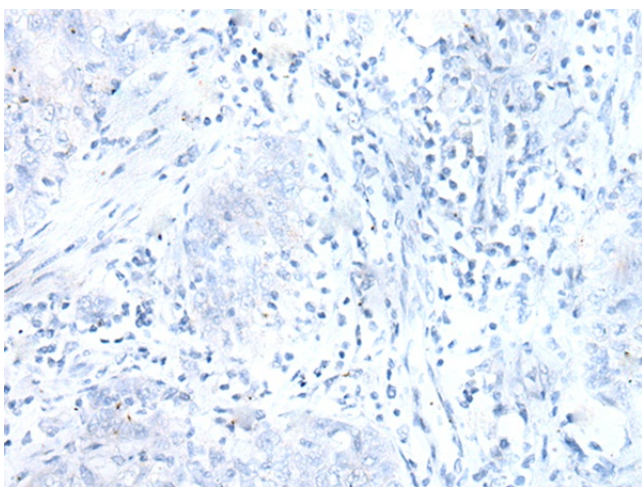
Immunohistochemistry of paraffin-embedded  
 Human lung cancer tissue using TA371723  
 (MORF4L1 Antibody) at dilution 1/30 (Original  
 magnification: ×200)



Immunohistochemistry of paraffin-embedded Human lung cancer tissue using TA371723 (MORF4L1 Antibody) at dilution 1/30, treated with synthetic peptide. (Original magnification:  $\times 200$ )



Immunohistochemistry of paraffin-embedded Human esophagus cancer tissue using TA371723 (MORF4L1 Antibody) at dilution 1/30 (Original magnification:  $\times 200$ )



Immunohistochemistry of paraffin-embedded Human esophagus cancer tissue using TA371723 (MORF4L1 Antibody) at dilution 1/30, treated with synthetic peptide. (Original magnification:  $\times 200$ )