

## Product datasheet for **TA371720S**

### Doublecortin (DCX) Rabbit Polyclonal Antibody

#### Product data:

Product Type:	Primary Antibodies
Applications:	IHC, WB
Recommended Dilution:	WB: 500-2000 WB positive control: 293T□K562 and Raji cell IHC: 25-100 Positive control: Human tonsil Predicted cell location: Cytoplasm
Reactivity:	Human
Host:	Rabbit
Isotype:	IgG
Clonality:	Polyclonal
Immunogen:	Synthetic peptide of human DCX
Formulation:	pH7.4 PBS, 0.05% NaN <sub>3</sub> , 40% Glycerol
Concentration:	lot specific
Purification:	Antigen affinity purification
Conjugation:	Unconjugated
Storage:	Store at -20°C.
Stability:	1 year
Predicted Protein Size:	49 kDa
Gene Name:	doublecortin
Database Link:	<a href="#">Entrez Gene 1641 Human O43602</a>



[View online »](#)

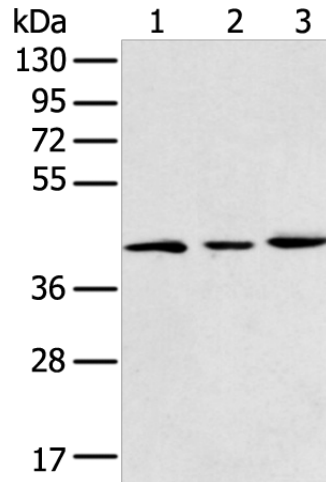
**Background:**

This gene encodes a member of the doublecortin family. The protein encoded by this gene is a cytoplasmic protein and contains two doublecortin domains, which bind microtubules. In the developing cortex, cortical neurons must migrate over long distances to reach the site of their final differentiation. The encoded protein appears to direct neuronal migration by regulating the organization and stability of microtubules. In addition, the encoded protein interacts with LIS1, the regulatory gamma subunit of platelet activating factor acetylhydrolase, and this interaction is important to proper microtubule function in the developing cortex.

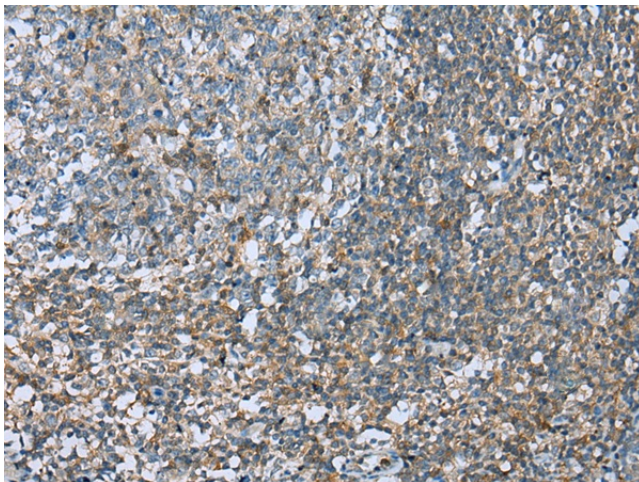
**Synonyms:**

DBCN; DC; doublecortex; doublecortin; doublin; Lis-X; lissencephalin-X; LISX; SCLH; XLIS

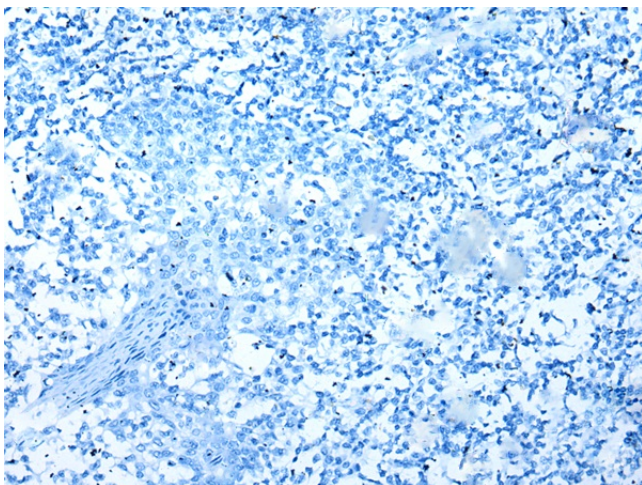
**Product images:**



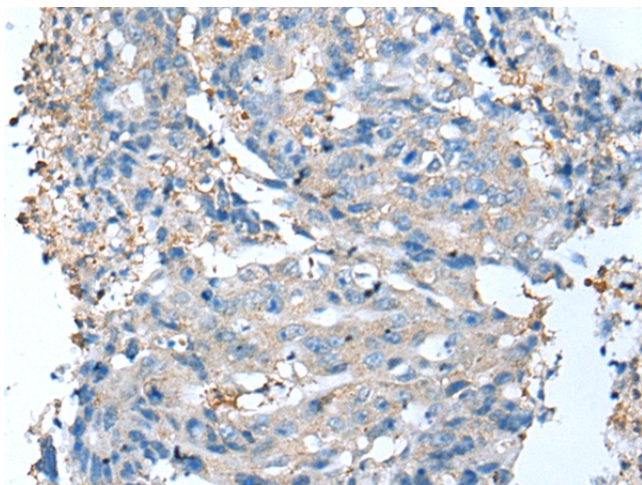
Gel: 8%SDS-PAGE  
 Lysate: 40 µg  
 Lane 1-3: 293T  
 K562 and Raji cell  
 Primary antibody: [TA371720] (DCX Antibody) at dilution 1/400  
 Secondary antibody: Goat anti rabbit IgG at 1/8000 dilution  
 Exposure time: 15 seconds



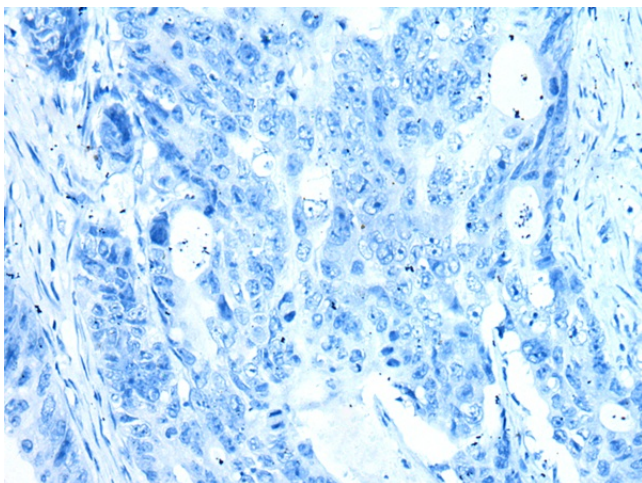
Immunohistochemistry of paraffin-embedded Human tonsil tissue using [TA371720] (DCX Antibody) at dilution 1/35 (Original magnification: ×200)



Immunohistochemistry of paraffin-embedded Human tonsil tissue using [TA371720] (DCX Antibody) at dilution 1/35, treated with synthetic peptide. (Original magnification: x200)



Immunohistochemistry of paraffin-embedded Human colorectal cancer tissue using [TA371720] (DCX Antibody) at dilution 1/35 (Original magnification: x200)



Immunohistochemistry of paraffin-embedded Human colorectal cancer tissue using [TA371720] (DCX Antibody) at dilution 1/35, treated with synthetic peptide. (Original magnification: x200)