

## Product datasheet for **TA371718S**

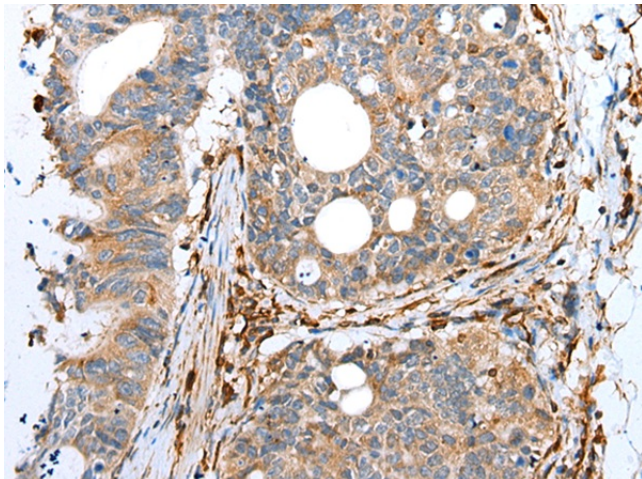
### SDCCAG8 Rabbit Polyclonal Antibody

#### Product data:

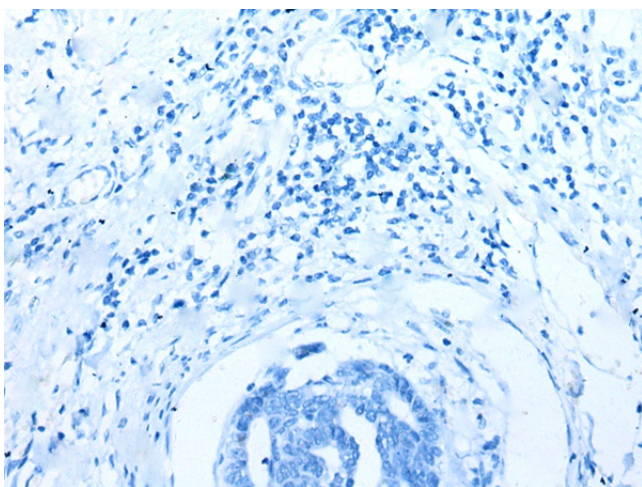
Product Type:	Primary Antibodies
Applications:	IHC
Recommended Dilution:	IHC: 25-100 Positive control: Human gastric cancer Predicted cell location: Cytoplasm and Cell membrane
Reactivity:	Human, Mouse
Host:	Rabbit
Isotype:	IgG
Clonality:	Polyclonal
Immunogen:	Synthetic peptide of human SDCCAG8
Formulation:	pH7.4 PBS, 0.05% NaN <sub>3</sub> , 40% Glycerol
Concentration:	lot specific
Purification:	Antigen affinity purification
Conjugation:	Unconjugated
Storage:	Store at -20°C.
Stability:	1 year
Gene Name:	serologically defined colon cancer antigen 8
Database Link:	<a href="#">Entrez Gene 10806 Human Q86SQ7</a>
Background:	This gene encodes a centrosome associated protein. This protein may be involved in organizing the centrosome during interphase and mitosis. Mutations in this gene are associated with retinal-renal ciliopathy.
Synonyms:	CCCAP; hCCCAP; HSPC085; NY-CO-8



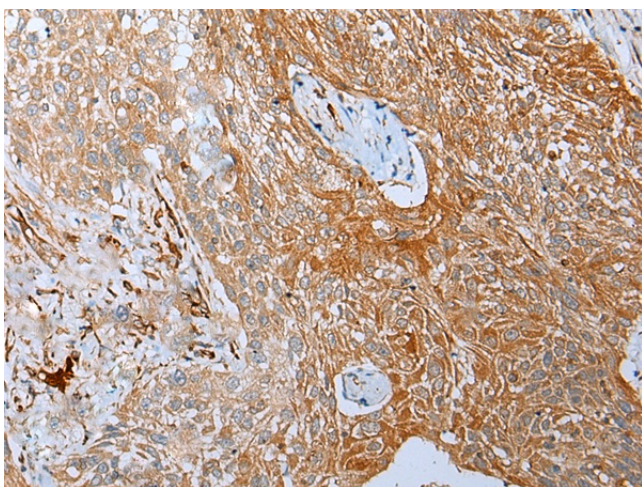
[View online »](#)

**Product images:**

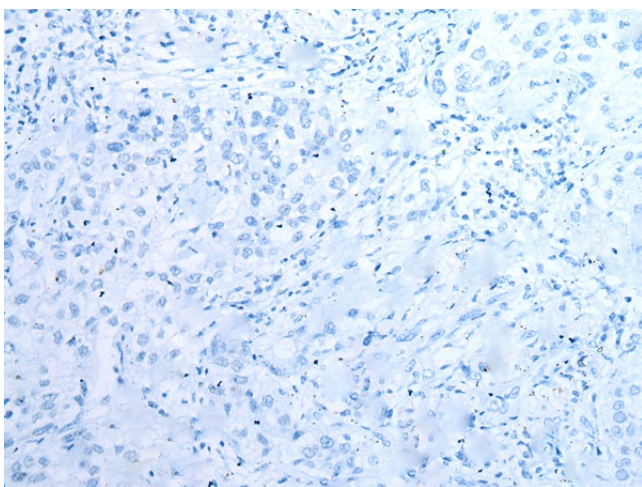
Immunohistochemistry of paraffin-embedded Human gastric cancer tissue using [TA371718] (SDCCAG8 Antibody) at dilution 1/20 (Original magnification:  $\times 200$ )



Immunohistochemistry of paraffin-embedded Human gastric cancer tissue using [TA371718] (SDCCAG8 Antibody) at dilution 1/20, treated with synthetic peptide. (Original magnification:  $\times 200$ )



Immunohistochemistry of paraffin-embedded Human lung cancer tissue using [TA371718] (SDCCAG8 Antibody) at dilution 1/20 (Original magnification:  $\times 200$ )



Immunohistochemistry of paraffin-embedded Human lung cancer tissue using [TA371718] (SDCCAG8 Antibody) at dilution 1/20, treated with synthetic peptide. (Original magnification:  $\times 200$ )