

## Product datasheet for **TA371705**

### 5 HT 2A (HTR2A) Rabbit Polyclonal Antibody

#### Product data:

Product Type:	Primary Antibodies
Applications:	IHC, WB
Recommended Dilution:	WB: 500-2000 WB positive control: Mouse brain tissue lysate IHC: 50-100 Positive control: Human esophagus cancer Predicted cell location: Cytoplasm
Reactivity:	Human, Mouse
Host:	Rabbit
Isotype:	IgG
Clonality:	Polyclonal
Immunogen:	Synthetic peptide of human HTR2A
Formulation:	pH7.4 PBS, 0.05% NaN <sub>3</sub> , 40% Glycerol
Concentration:	lot specific
Purification:	Antigen affinity purification
Conjugation:	Unconjugated
Storage:	Store at -20°C.
Stability:	1 year
Predicted Protein Size:	53 kDa
Gene Name:	5-hydroxytryptamine receptor 2A
Database Link:	<a href="#">Entrez Gene 3356 Human P28223</a>



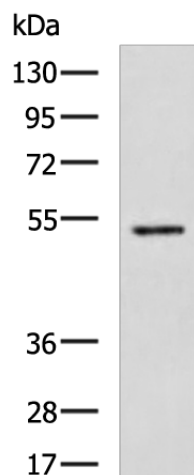
[View online »](#)

**Background:**

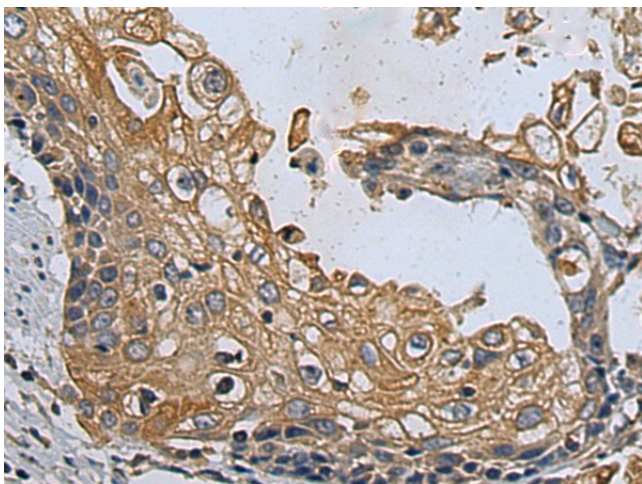
This gene encodes one of the receptors for serotonin, a neurotransmitter with many roles. Mutations in this gene are associated with susceptibility to schizophrenia and obsessive-compulsive disorder, and are also associated with response to the antidepressant citalopram in patients with major depressive disorder (MDD). MDD patients who also have a mutation in intron 2 of this gene show a significantly reduced response to citalopram as this antidepressant downregulates expression of this gene. Multiple transcript variants encoding different isoforms have been found for this gene.

**Synonyms:**

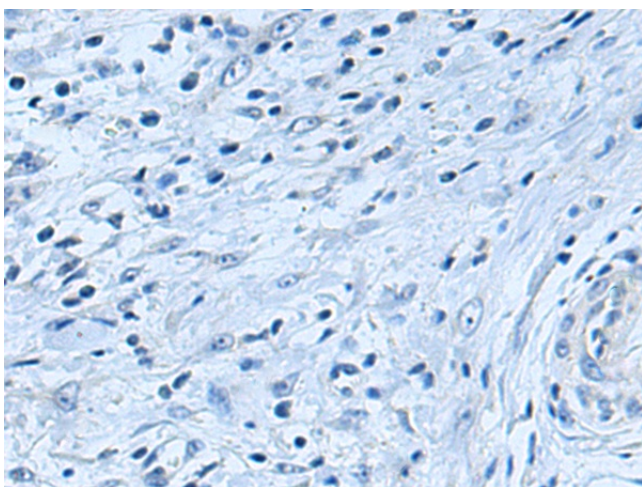
5-HT-2; 5-HT-2A; 5-HT2A; HTR2

**Product images:**

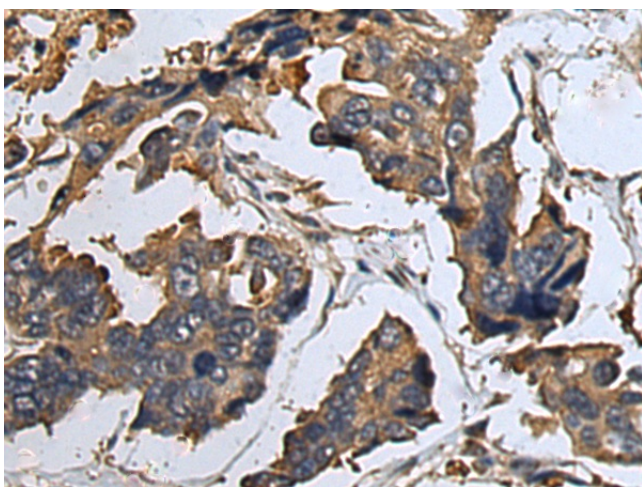
Gel: 8%SDS-PAGE  
Lysate: 40 µg  
Lane: Mouse brain tissue lysate  
Primary antibody: TA371705 (HTR2A Antibody) at dilution 1/400  
Secondary antibody: Goat anti rabbit IgG at 1/5000 dilution  
Exposure time: 3 minutes



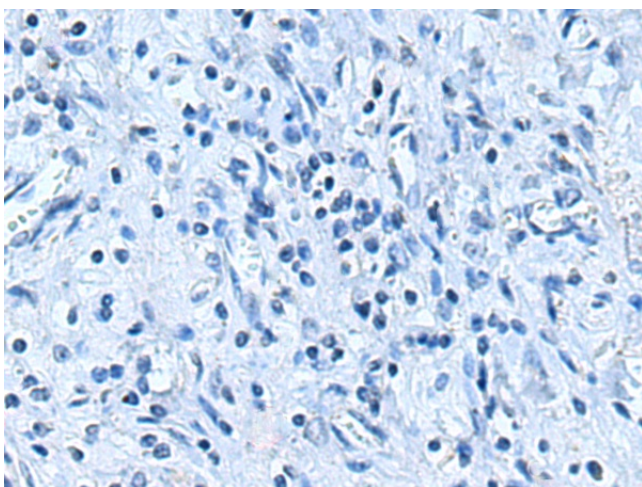
Immunohistochemistry of paraffin-embedded Human esophagus cancer tissue using TA371705 (HTR2A Antibody) at dilution 1/40 (Original magnification: ×200)



Immunohistochemistry of paraffin-embedded Human esophagus cancer tissue using TA371705 (HTR2A Antibody) at dilution 1/40, treated with synthetic peptide. (Original magnification: ×200)



Immunohistochemistry of paraffin-embedded Human colorectal cancer tissue using TA371705 (HTR2A Antibody) at dilution 1/40 (Original magnification: ×200)



Immunohistochemistry of paraffin-embedded Human colorectal cancer tissue using TA371705 (HTR2A Antibody) at dilution 1/40, treated with synthetic peptide. (Original magnification: ×200)