

## Product datasheet for **TA371703S**

### **Bim (BCL2L11) Rabbit Polyclonal Antibody**

#### **Product data:**

Product Type:	Primary Antibodies
Applications:	IHC, WB
Recommended Dilution:	WB: 500-2000 WB positive control: Rat kidney tissue, Raji, A549, HeLa, A431, K562 cell lysates IHC: 20-100 Positive control: Human prostate cancer Predicted cell location: Cytoplasm
Reactivity:	Human, Mouse, Rat
Host:	Rabbit
Isotype:	IgG
Clonality:	Polyclonal
Immunogen:	Synthetic peptide of human BCL2L11
Formulation:	pH7.4 PBS, 0.05% NaN <sub>3</sub> , 40% Glycerol
Concentration:	lot specific
Purification:	Antigen affinity purification
Conjugation:	Unconjugated
Storage:	Store at -20°C.
Stability:	1 year
Predicted Protein Size:	22 kDa
Gene Name:	BCL2 like 11
Database Link:	<a href="#">Entrez Gene 10018 Human O43521</a>



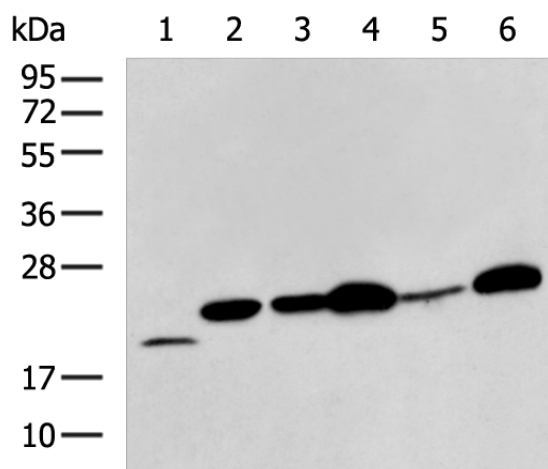
[View online »](#)

**Background:**

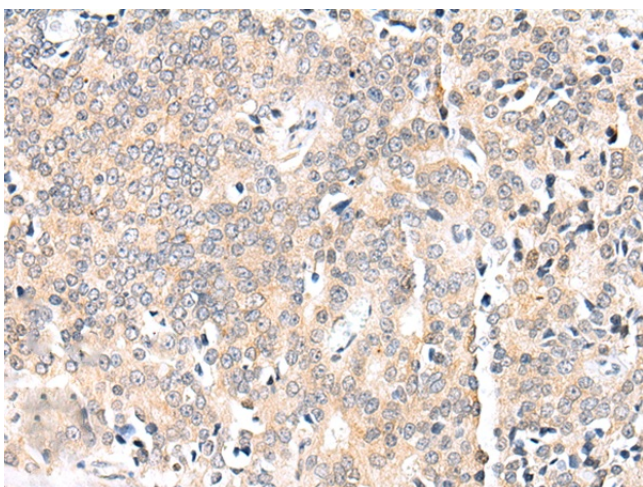
The protein encoded by this gene belongs to the BCL-2 protein family. BCL-2 family members form hetero- or homodimers and act as anti- or pro-apoptotic regulators that are involved in a wide variety of cellular activities. The protein encoded by this gene contains a Bcl-2 homology domain 3 (BH3). It has been shown to interact with other members of the BCL-2 protein family and to act as an apoptotic activator. The expression of this gene can be induced by nerve growth factor (NGF), as well as by the forkhead transcription factor FKHL-1, which suggests a role of this gene in neuronal and lymphocyte apoptosis. Transgenic studies of the mouse counterpart suggested that this gene functions as an essential initiator of apoptosis in thymocyte-negative selection. Several alternatively spliced transcript variants of this gene have been identified.

**Synonyms:**

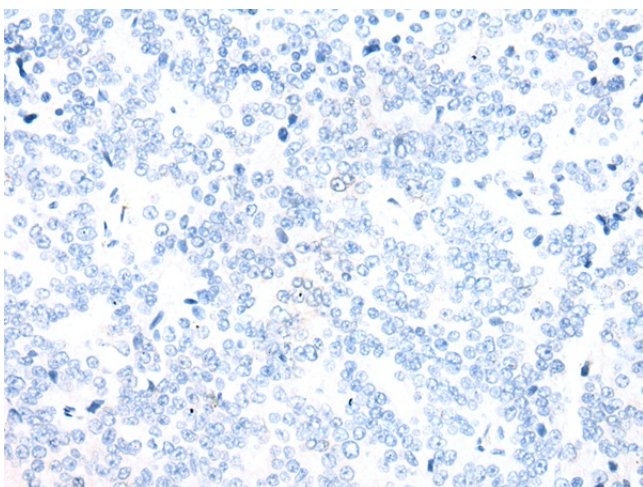
BAM; Bcl2-L-11; BIM; BIM-alpha6; BIM-beta6; BIM-beta7; BimEL; BimL; BOD; OTTHUMP00000197013

**Product images:**

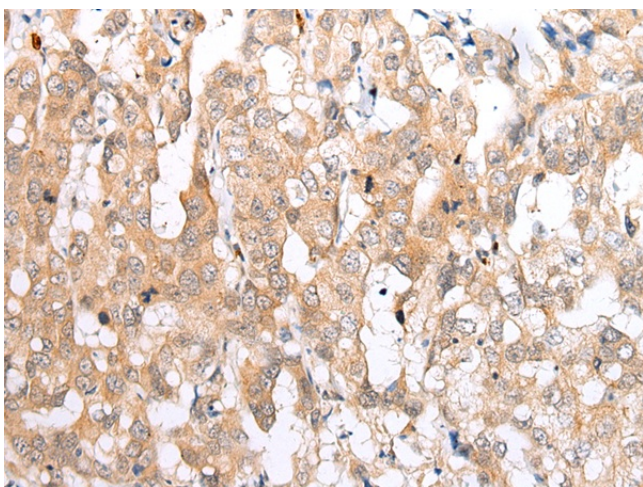
Gel: 12%SDS-PAGE  
Lysate: 40 µg  
Lane 1-6: Rat kidney tissue  
Raji  
A549  
Hela  
A431  
K562 cell lysates  
Primary antibody: [TA371703] (BCL2L11 Antibody)  
at dilution 1/350  
Secondary antibody: Goat anti rabbit IgG at  
1/8000 dilution  
Exposure time: 3 minutes



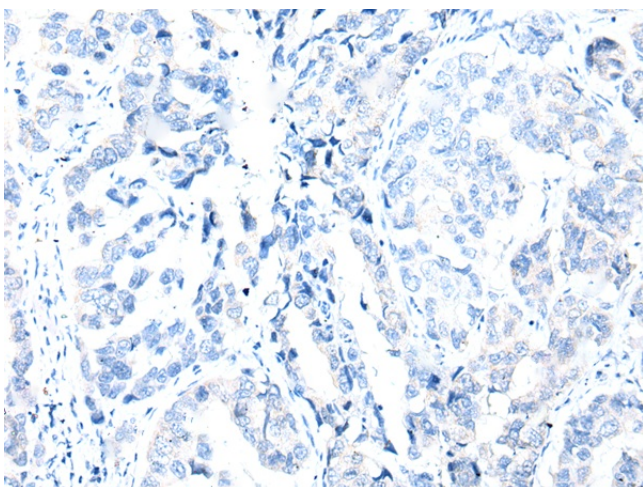
Immunohistochemistry of paraffin-embedded Human prostate cancer tissue using [TA371703] (BCL2L11 Antibody) at dilution 1/25 (Original magnification: ×200)



Immunohistochemistry of paraffin-embedded Human prostate cancer tissue using [TA371703] (BCL2L11 Antibody) at dilution 1/25, treated with synthetic peptide. (Original magnification: ×200)



Immunohistochemistry of paraffin-embedded Human breast cancer tissue using [TA371703] (BCL2L11 Antibody) at dilution 1/25 (Original magnification: ×200)



Immunohistochemistry of paraffin-embedded Human breast cancer tissue using [TA371703] (BCL2L11 Antibody) at dilution 1/25, treated with synthetic peptide. (Original magnification: ×200)