

## Product datasheet for **TA371702**

### **BAG2 Rabbit Polyclonal Antibody**

#### **Product data:**

Product Type:	Primary Antibodies
Applications:	IHC, WB
Recommended Dilution:	WB: 500-2000 WB positive control: Human fetal muscle tissue□HEPG2□Jurkat,Hela□A431 and A549 cell IHC: 30-150 Positive control: Human tonsil Predicted cell location: Cytoplasm
Reactivity:	Human
Host:	Rabbit
Isotype:	IgG
Clonality:	Polyclonal
Immunogen:	Synthetic peptide of human BAG2
Formulation:	pH7.4 PBS, 0.05% NaN <sub>3</sub> , 40% Glycerol
Concentration:	lot specific
Purification:	Antigen affinity purification
Conjugation:	Unconjugated
Storage:	Store at -20°C.
Stability:	1 year
Predicted Protein Size:	24 kDa
Gene Name:	BCL2 associated athanogene 2
Database Link:	<a href="#">Entrez Gene 9532 Human O95816</a>



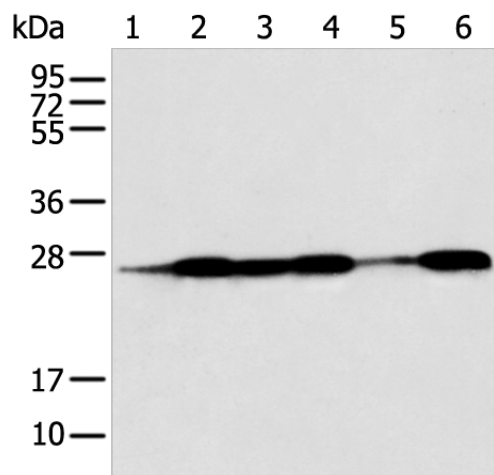
[View online »](#)

**Background:**

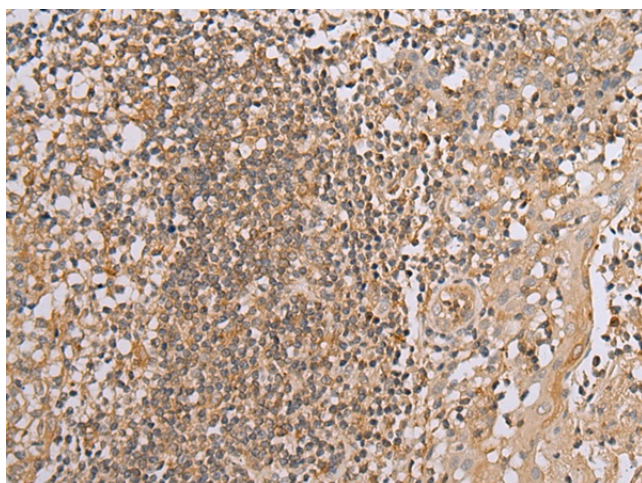
BAG proteins compete with Hip for binding to the Hsc70/Hsp70 ATPase domain and promote substrate release. All the BAG proteins have an approximately 45-amino acid BAG domain near the C terminus but differ markedly in their N-terminal regions. The predicted BAG2 protein contains 211 amino acids. The BAG domains of BAG1, BAG2, and BAG3 interact specifically with the Hsc70 ATPase domain in vitro and in mammalian cells. All 3 proteins bind with high affinity to the ATPase domain of Hsc70 and inhibit its chaperone activity in a Hip-repressible manner.

**Synonyms:**

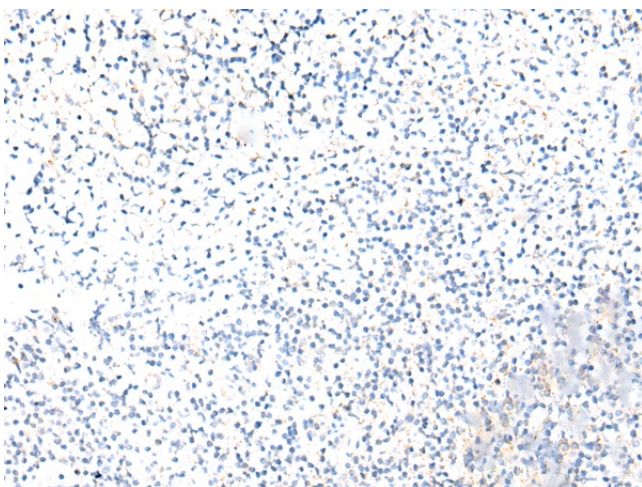
BAG-2; dj41711.2; KIAA0576; MGC149462

**Product images:**


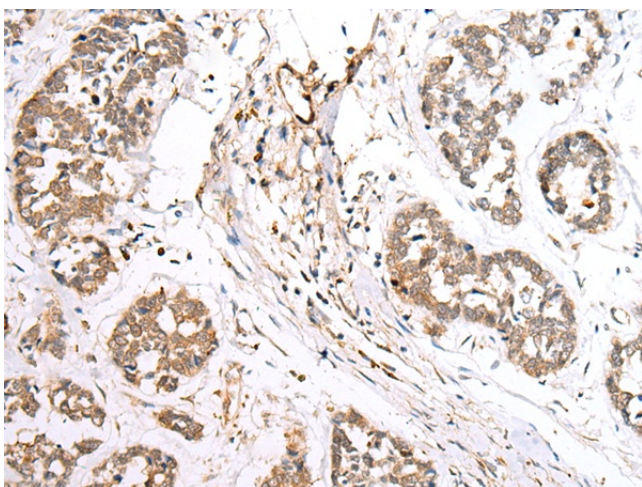
Gel: 12%SDS-PAGE  
 Lysate: 40 µg  
 Lane 1-6: Human fetal muscle tissue  
 HEPG2  
 Jurkat  
 HeLa  
 A431 and A549 cell  
 Primary antibody: TA371702 (BAG2 Antibody) at dilution 1/550  
 Secondary antibody: Goat anti rabbit IgG at 1/8000 dilution  
 Exposure time: 3 seconds



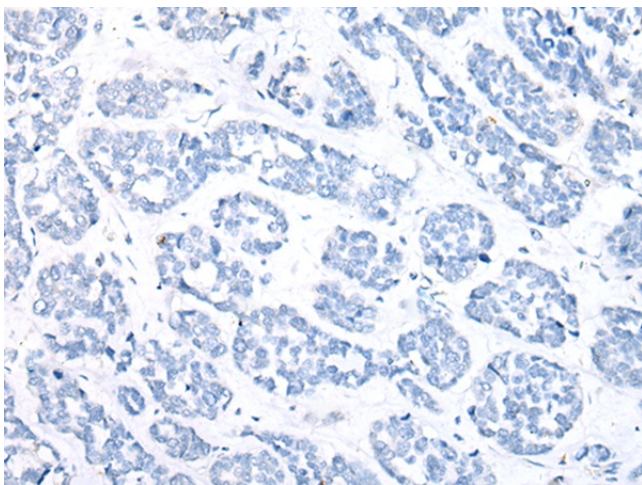
Immunohistochemistry of paraffin-embedded Human tonsil tissue using TA371702 (BAG2 Antibody) at dilution 1/40 (Original magnification: ×200)



Immunohistochemistry of paraffin-embedded Human tonsil tissue using TA371702 (BAG2 Antibody) at dilution 1/40, treated with synthetic peptide. (Original magnification:  $\times 200$ )



Immunohistochemistry of paraffin-embedded Human esophagus cancer tissue using TA371702 (BAG2 Antibody) at dilution 1/40 (Original magnification:  $\times 200$ )



Immunohistochemistry of paraffin-embedded Human esophagus cancer tissue using TA371702 (BAG2 Antibody) at dilution 1/40, treated with synthetic peptide. (Original magnification:  $\times 200$ )