

## Product datasheet for **TA371677S**

### Dysferlin (DYSF) Rabbit Polyclonal Antibody

#### Product data:

Product Type:	Primary Antibodies
Applications:	IHC
Recommended Dilution:	IHC: 25-100 Positive control: Human brain Predicted cell location: Cytoplasm
Reactivity:	Human, Mouse
Host:	Rabbit
Isotype:	IgG
Clonality:	Polyclonal
Immunogen:	Synthetic peptide of human DYSF
Formulation:	pH7.4 PBS, 0.05% NaN <sub>3</sub> , 40% Glycerol
Concentration:	lot specific
Purification:	Antigen affinity purification
Conjugation:	Unconjugated
Storage:	Store at -20°C.
Stability:	1 year
Gene Name:	dysferlin
Database Link:	<a href="#">Entrez Gene 8291 Human O75923</a>

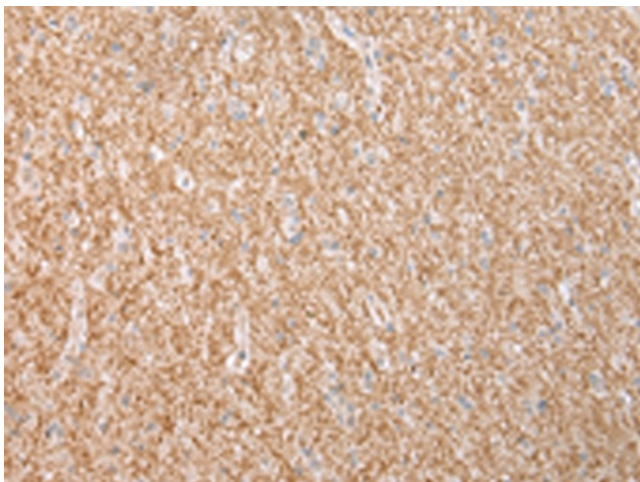
**Background:** The protein encoded by this gene belongs to the ferlin family and is a skeletal muscle protein found associated with the sarcolemma. It is involved in muscle contraction and contains C2 domains that play a role in calcium-mediated membrane fusion events, suggesting that it may be involved in membrane regeneration and repair. In addition, the protein encoded by this gene binds caveolin-3, a skeletal muscle membrane protein which is important in the formation of caveolae. Specific mutations in this gene have been shown to cause autosomal recessive limb girdle muscular dystrophy type 2B (LGMD2B) as well as Miyoshi myopathy. Alternative splicing results in multiple transcript variants.



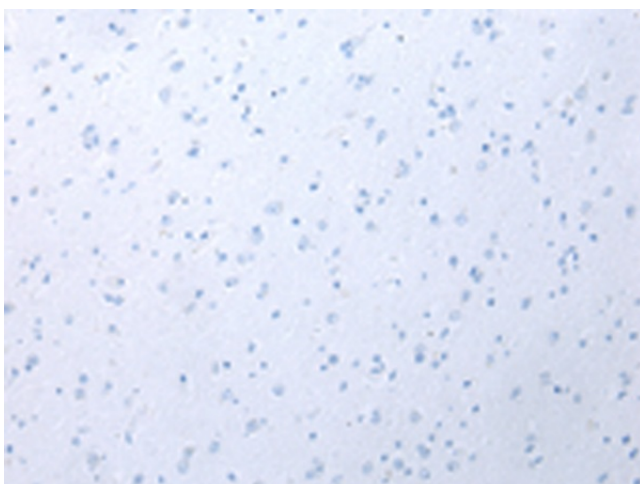
[View online »](#)

**Synonyms:**

dysferlin; FER1L1; FLJ00175; FLJ90168; LGMD2B; OTTHUMP00000202233;  
OTTHUMP00000202234; OTTHUMP00000202235; OTTHUMP00000202236;  
OTTHUMP00000202237; OTTHUMP00000202240

**Product images:**

Immunohistochemistry of paraffin-embedded Human brain tissue using [TA371677] (DYSF Antibody) at dilution 1/25 (Original magnification: ×200)



Immunohistochemistry of paraffin-embedded Human brain tissue using [TA371677] (DYSF Antibody) at dilution 1/25, treated with synthetic peptide. (Original magnification: ×200)