

Product datasheet for **TA371661S**

UBE2I Rabbit Polyclonal Antibody

Product data:

Product Type:	Primary Antibodies
Applications:	IHC, WB
Recommended Dilution:	WB: 500-2000 WB positive control: TM4, hela, 293T and Jurkat cell IHC: 25-100 Positive control: Human colorectal cancer Predicted cell location: Nucleus and Cytoplasm
Reactivity:	Human, Mouse, Rat
Host:	Rabbit
Isotype:	IgG
Clonality:	Polyclonal
Immunogen:	Synthetic peptide of human UBE2I
Formulation:	pH7.4 PBS, 0.05% NaN ₃ , 40% Glycerol
Concentration:	lot specific
Purification:	Antigen affinity purification
Conjugation:	Unconjugated
Storage:	Store at -20°C.
Stability:	1 year
Predicted Protein Size:	18 kDa
Gene Name:	ubiquitin conjugating enzyme E2 I
Database Link:	Entrez Gene 7329 Human P63279

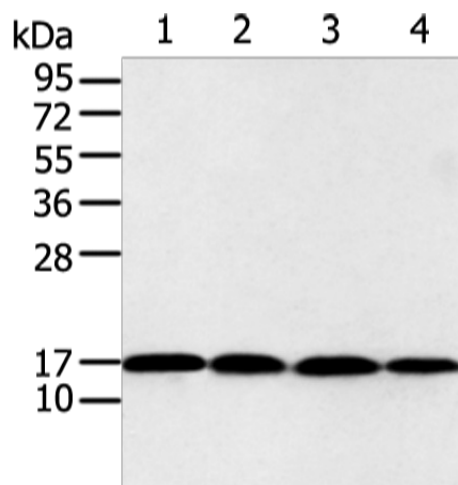
Background: The modification of proteins with ubiquitin is an important cellular mechanism for targeting abnormal or short-lived proteins for degradation. Ubiquitination involves at least three classes of enzymes: ubiquitin-activating enzymes, or E1s, ubiquitin-conjugating enzymes, or E2s, and ubiquitin-protein ligases, or E3s. This gene encodes a member of the E2 ubiquitin-conjugating enzyme family. Four alternatively spliced transcript variants encoding the same protein have been found for this gene.



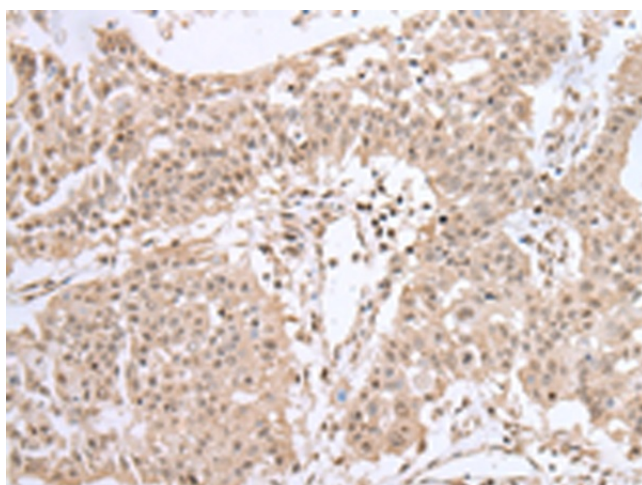
[View online »](#)

Synonyms: C358B7.1; OTTHUMP00000198126; OTTHUMP00000198127; P18; UBC9; UBCE9

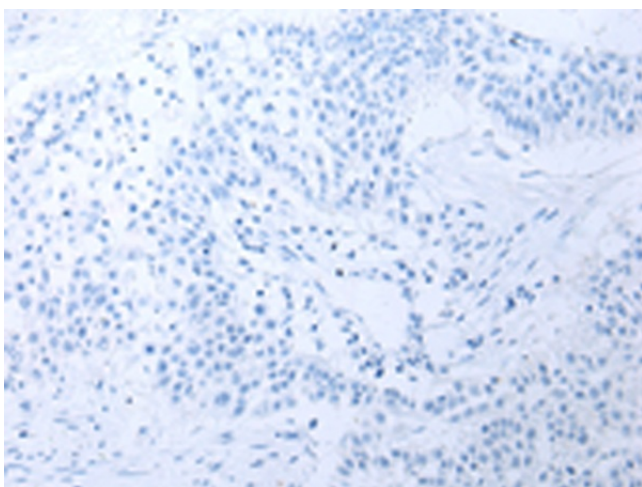
Product images:



Gel: 12%SDS-PAGE
 Lysate: 40 µg
 Lane 1-4: TM4
 hela
 293T and Jurkat cell
 Primary antibody: [TA371661] (UBE2I Antibody) at dilution 1/650
 Secondary antibody: Goat anti rabbit IgG at 1/8000 dilution
 Exposure time: 10 seconds



Immunohistochemistry of paraffin-embedded Human colorectal cancer tissue using [TA371661] (UBE2I Antibody) at dilution 1/40 (Original magnification: ×200)



Immunohistochemistry of paraffin-embedded Human colorectal cancer tissue using [TA371661] (UBE2I Antibody) at dilution 1/40, treated with synthetic peptide. (Original magnification: $\times 200$)