

## Product datasheet for **TA371657S**

### ATG16L1 Rabbit Polyclonal Antibody

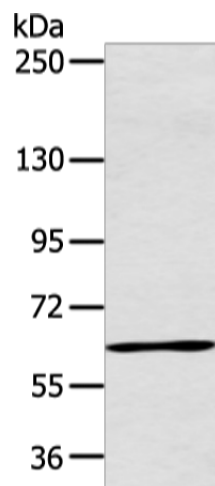
#### Product data:

Product Type:	Primary Antibodies
Applications:	IHC, WB
Recommended Dilution:	WB: 500-2000 WB positive control: Raji cell IHC: 30-150 Positive control: Human breast cancer Predicted cell location: Cytoplasm
Reactivity:	Human, Mouse
Host:	Rabbit
Isotype:	IgG
Clonality:	Polyclonal
Immunogen:	Synthetic peptide of human ATG16L1
Formulation:	pH7.4 PBS, 0.05% NaN <sub>3</sub> , 40% Glycerol
Concentration:	lot specific
Purification:	Antigen affinity purification
Conjugation:	Unconjugated
Storage:	Store at -20°C.
Stability:	1 year
Predicted Protein Size:	68 kDa
Gene Name:	autophagy related 16 like 1
Database Link:	<a href="#">Entrez Gene 55054 Human Q676U5</a>
Background:	The protein encoded by this gene is part of a large protein complex that is necessary for autophagy, the major process by which intracellular components are targeted to lysosomes for degradation. Defects in this gene are a cause of susceptibility to inflammatory bowel disease type 10 (IBD10). Several transcript variants encoding different isoforms have been found for this gene.
Synonyms:	APG16L; ATG16L; FLJ00045; FLJ10035; FLJ10828; FLJ22677; IBD10; WDR30

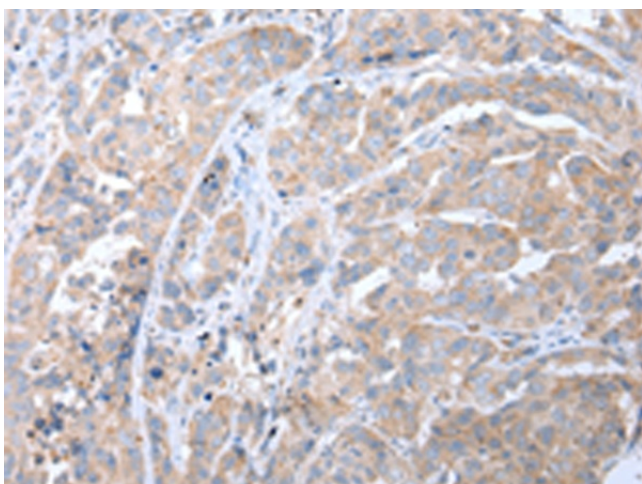


[View online »](#)

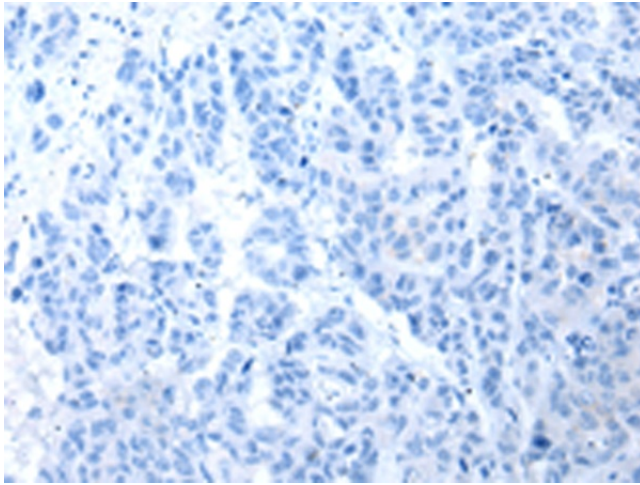
## Product images:



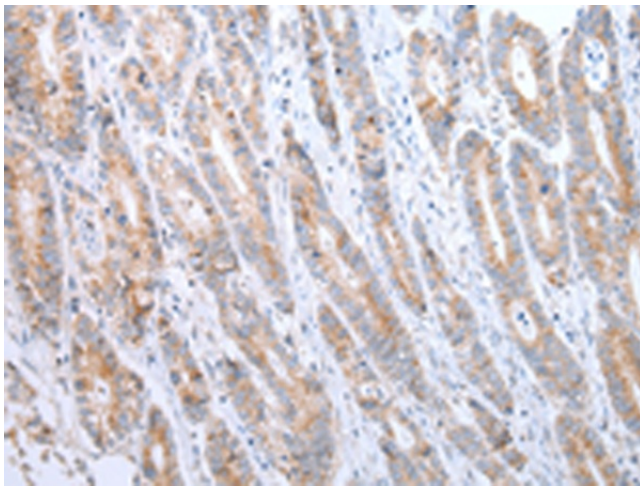
Gel: 6%SDS-PAGE  
Lysate: 40 µg  
Lane: Raji cell  
Primary antibody: [TA371657] (ATG16L1 Antibody) at dilution 1/600  
Secondary antibody: Goat anti rabbit IgG at 1/8000 dilution  
Exposure time: 20 seconds



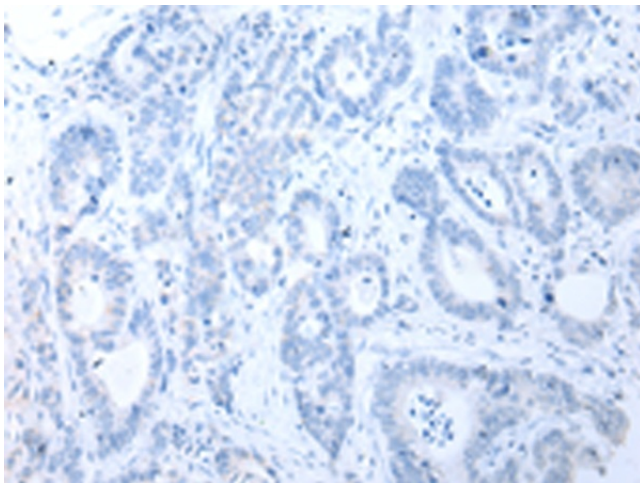
Immunohistochemistry of paraffin-embedded Human breast cancer tissue using [TA371657] (ATG16L1 Antibody) at dilution 1/40 (Original magnification: ×200)



Immunohistochemistry of paraffin-embedded Human breast cancer tissue using [TA371657] (ATG16L1 Antibody) at dilution 1/40, treated with synthetic peptide. (Original magnification:  $\times 200$ )



Immunohistochemistry of paraffin-embedded Human gastric cancer tissue using [TA371657] (ATG16L1 Antibody) at dilution 1/40 (Original magnification:  $\times 200$ )



Immunohistochemistry of paraffin-embedded Human gastric cancer tissue using [TA371657] (ATG16L1 Antibody) at dilution 1/40, treated with synthetic peptide. (Original magnification:  $\times 200$ )