

## Product datasheet for **TA371656**

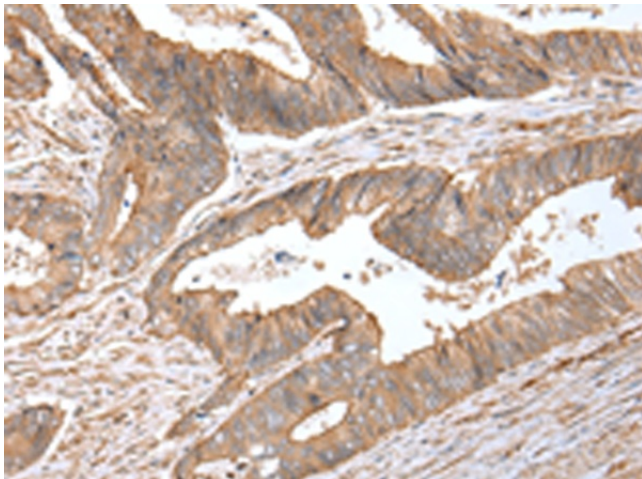
### ACVRL1 Rabbit Polyclonal Antibody

#### Product data:

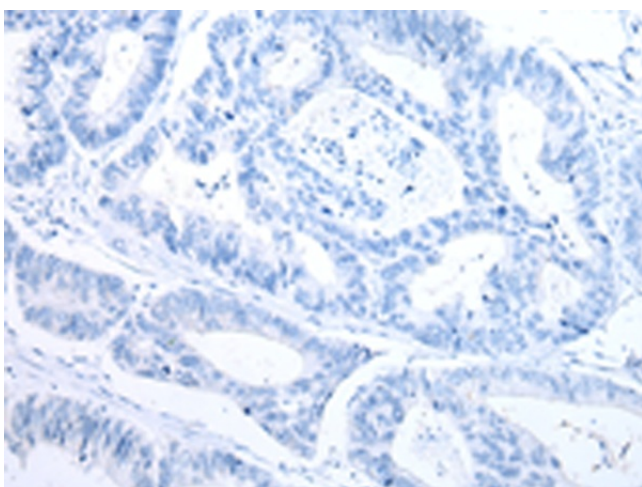
Product Type:	Primary Antibodies
Applications:	IHC
Recommended Dilution:	IHC: 25-100 Positive control: Human colorectal cancer Predicted cell location: Cytoplasm or Cell membrane
Reactivity:	Human
Host:	Rabbit
Isotype:	IgG
Clonality:	Polyclonal
Immunogen:	Synthetic peptide of human ACVRL1
Formulation:	pH7.4 PBS, 0.05% NaN <sub>3</sub> , 40% Glycerol
Concentration:	lot specific
Purification:	Antigen affinity purification
Conjugation:	Unconjugated
Storage:	Store at -20°C.
Stability:	1 year
Gene Name:	activin A receptor like type 1
Database Link:	<a href="#">Entrez Gene 94 Human P37023</a>
Background:	This gene encodes a type I cell-surface receptor for the TGF-beta superfamily of ligands. It shares with other type I receptors a high degree of similarity in serine-threonine kinase subdomains, a glycine- and serine-rich region (called the GS domain) preceding the kinase domain, and a short C-terminal tail. The encoded protein, sometimes termed ALK1, shares similar domain structures with other closely related ALK or activin receptor-like kinase proteins that form a subfamily of receptor serine/threonine kinases.
Synonyms:	ACVRLK1; ALK-1; ALK1; HHT; HHT2; ORW2; SKR3; TSR-I



[View online »](#)

**Product images:**

Immunohistochemistry of paraffin-embedded Human colorectal cancer tissue using TA371656 (ACVRL1 Antibody) at dilution 1/30 (Original magnification:  $\times 200$ )



Immunohistochemistry of paraffin-embedded Human colorectal cancer tissue using TA371656 (ACVRL1 Antibody) at dilution 1/30, treated with synthetic peptide. (Original magnification:  $\times 200$ )