

## Product datasheet for **TA371652S**

### COLEC12 Rabbit Polyclonal Antibody

#### Product data:

Product Type:	Primary Antibodies
Applications:	IHC, WB
Recommended Dilution:	WB: 200-1000 WB positive control: NIH/3T3 cell lysate IHC: 20-100 Positive control: Human liver cancer Predicted cell location: Cytoplasm
Reactivity:	Human, Mouse, Rat
Host:	Rabbit
Isotype:	IgG
Clonality:	Polyclonal
Immunogen:	Synthetic peptide of human COLEC12
Formulation:	pH7.4 PBS, 0.05% NaN <sub>3</sub> , 40% Glycerol
Concentration:	lot specific
Purification:	Antigen affinity purification
Conjugation:	Unconjugated
Storage:	Store at -20°C.
Stability:	1 year
Predicted Protein Size:	82 kDa
Gene Name:	collectin subfamily member 12
Database Link:	<a href="#">Entrez Gene 81035 Human Q5KU26</a>

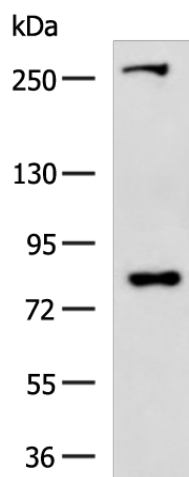
**Background:** This gene encodes a member of the C-lectin family, proteins that possess collagen-like sequences and carbohydrate recognition domains. This protein is a scavenger receptor that displays several functions associated with host defense. It can bind to carbohydrate antigens on microorganisms, facilitating their recognition and removal. It also mediates the recognition, internalization, and degradation of oxidatively modified low density lipoprotein by vascular endothelial cells.



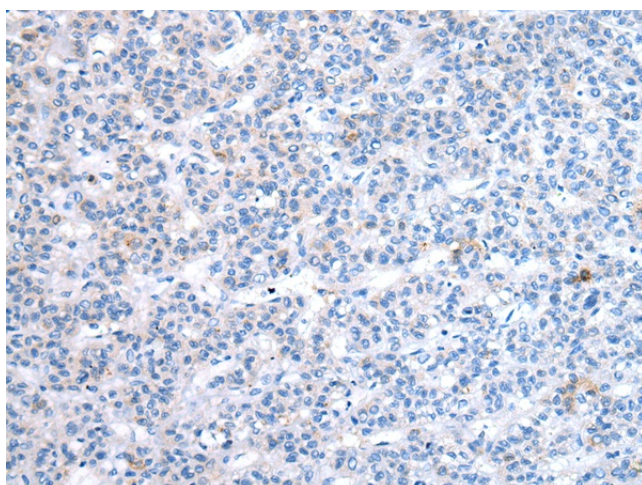
[View online »](#)

Synonyms: CL-P1; CLP1; hCL-P1; NSR2; SCARA4; SRCL

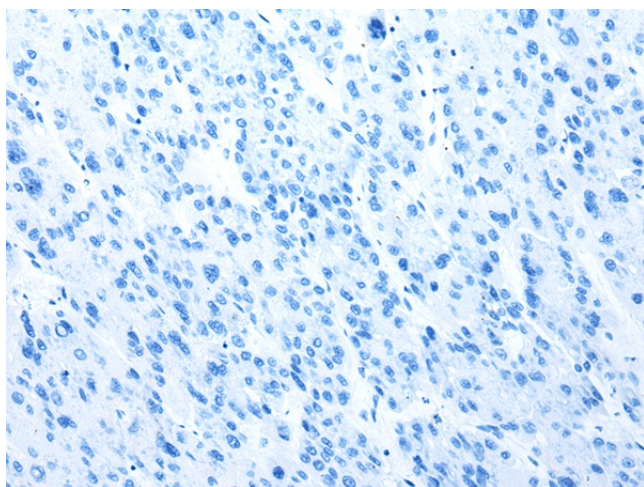
### Product images:



Gel: 6%SDS-PAGE  
Lysate: 40  $\mu$ g  
Lane: NIH/3T3 cell lysate  
Primary antibody: [TA371652] (COLEC12 Antibody) at dilution 1/300  
Secondary antibody: Goat anti rabbit IgG at 1/8000 dilution  
Exposure time: 3 minutes



Immunohistochemistry of paraffin-embedded Human liver cancer tissue using [TA371652] (COLEC12 Antibody) at dilution 1/20 (Original magnification:  $\times$ 200)



Immunohistochemistry of paraffin-embedded Human liver cancer tissue using [TA371652] (COLEC12 Antibody) at dilution 1/20, treated with synthetic peptide. (Original magnification:  $\times 200$ )