

Product datasheet for **TA371645S**

Exodus 2 (CCL21) Rabbit Polyclonal Antibody

Product data:

Product Type:	Primary Antibodies
Applications:	WB
Recommended Dilution:	WB: 500-2000 WB positive control: Human lymph gland tissue lysate
Reactivity:	Human
Host:	Rabbit
Isotype:	IgG
Clonality:	Polyclonal
Immunogen:	Synthetic peptide of human CCL21
Formulation:	pH7.4 PBS, 0.05% NaN ₃ , 40% Glycerol
Concentration:	lot specific
Purification:	Antigen affinity purification
Conjugation:	Unconjugated
Storage:	Store at -20°C.
Stability:	1 year
Predicted Protein Size:	15 kDa
Gene Name:	C-C motif chemokine ligand 21
Database Link:	Entrez Gene 6366 Human O00585



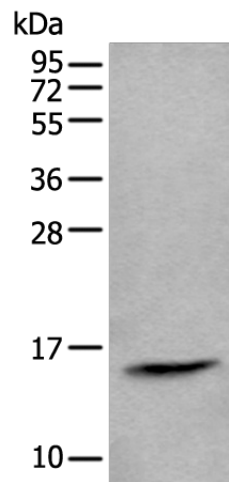
[View online »](#)

Background:

This antimicrobial gene is one of several CC cytokine genes clustered on the p-arm of chromosome 9. Cytokines are a family of secreted proteins involved in immunoregulatory and inflammatory processes. The CC cytokines are proteins characterized by two adjacent cysteines. Similar to other chemokines the protein encoded by this gene inhibits hemopoiesis and stimulates chemotaxis. This protein is chemotactic in vitro for thymocytes and activated T cells, but not for B cells, macrophages, or neutrophils. The cytokine encoded by this gene may also play a role in mediating homing of lymphocytes to secondary lymphoid organs. It is a high affinity functional ligand for chemokine receptor 7 that is expressed on T and B lymphocytes and a known receptor for another member of the cytokine family (small inducible cytokine A19).

Synonyms:

6Ckine; CKb9; ECL; exodus-2; MGC34555; SCYA21; SLC; TCA4

Product images:

Gel: 12%SDS-PAGE
Lysate: 40 µg
Lane: Human lymph gland tissue lysate
Primary antibody: [TA371645] (CCL21 Antibody)
at dilution 1/600
Secondary antibody: Goat anti rabbit IgG at
1/8000 dilution
Exposure time: 1 minute