

Product datasheet for **TA371641S**

FGF6 Rabbit Polyclonal Antibody

Product data:

Product Type:	Primary Antibodies
Applications:	WB
Recommended Dilution:	WB: 1000-5000 WB positive control: HepG2, Hela, 293T cell lysates
Reactivity:	Human, Mouse
Host:	Rabbit
Isotype:	IgG
Clonality:	Polyclonal
Immunogen:	Synthetic peptide of human FGF6
Formulation:	pH7.4 PBS, 0.05% NaN ₃ , 40% Glycerol
Concentration:	lot specific
Purification:	Antigen affinity purification
Conjugation:	Unconjugated
Storage:	Store at -20°C.
Stability:	1 year
Predicted Protein Size:	23 kDa
Gene Name:	fibroblast growth factor 6
Database Link:	Entrez Gene 2251 Human P10767

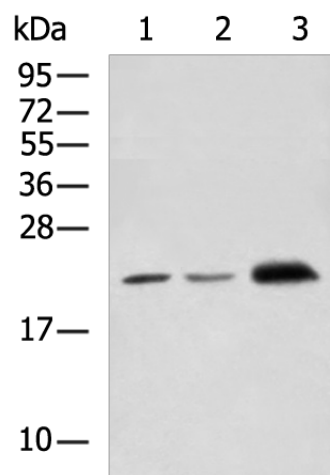
Background: The protein encoded by this gene is a member of the fibroblast growth factor (FGF) family. FGF family members possess broad mitogenic and cell survival activities, and are involved in a variety of biological processes, including embryonic development, cell growth, morphogenesis, tissue repair, tumor growth and invasion. This gene displayed oncogenic transforming activity when transfected into mammalian cells. The mouse homolog of this gene exhibits a restricted expression profile predominantly in the myogenic lineage, which suggested a role in muscle regeneration or differentiation.

Synonyms: FGF-6; HBGF-6; HST-2; HST2



[View online »](#)

Product images:



Gel: 12%SDS-PAGE
Lysate: 40 μ g
Lane 1-3: HepG2
Hela
293T cell lysates
Primary antibody: [TA371641] (FGF6 Antibody) at dilution 1/1100
Secondary antibody: Goat anti rabbit IgG at 1/5000 dilution
Exposure time: 45 seconds