

Product datasheet for **TA371635S**

HNF1 alpha (HNF1A) Rabbit Polyclonal Antibody

Product data:

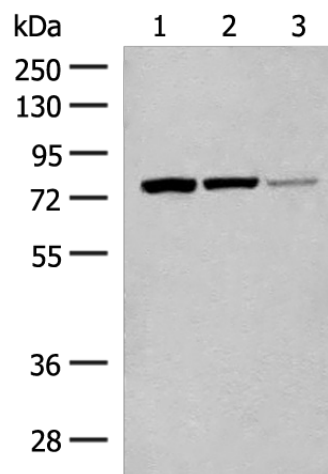
Product Type:	Primary Antibodies
Applications:	IHC, WB
Recommended Dilution:	WB: 500-2000 WB positive control: A172 cell, Mouse liver tissue, Hela cell lysates IHC: 30-150 Positive control: Human cervical cancer Predicted cell location: Nucleus
Reactivity:	Human, Mouse, Rat
Host:	Rabbit
Isotype:	IgG
Clonality:	Polyclonal
Immunogen:	Synthetic peptide of human HNF1A
Formulation:	pH7.4 PBS, 0.05% NaN ₃ , 40% Glycerol
Concentration:	lot specific
Purification:	Antigen affinity purification
Conjugation:	Unconjugated
Storage:	Store at -20°C.
Stability:	1 year
Predicted Protein Size:	67 kDa
Gene Name:	HNF1 homeobox A
Database Link:	Entrez Gene 6927 Human P20823
Background:	The protein encoded by this gene is a transcription factor required for the expression of several liver-specific genes. The encoded protein functions as a homodimer and binds to the inverted palindrome 5'-GTTAATNATTAAC-3'. Defects in this gene are a cause of maturity onset diabetes of the young type 3 (MODY3) and also can result in the appearance of hepatic adenomas. Alternative splicing results in multiple transcript variants encoding different isoforms.



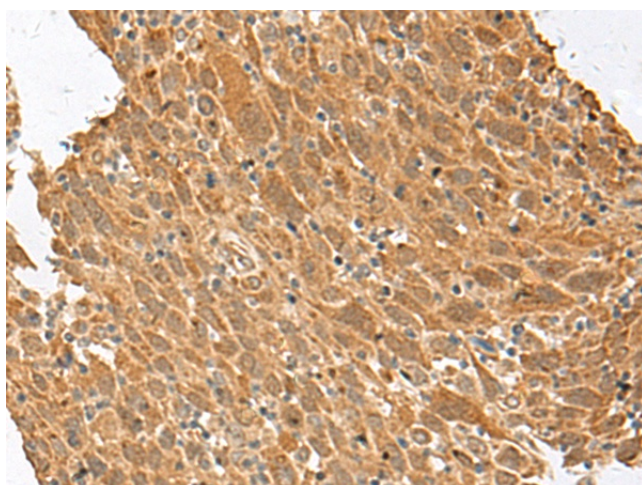
[View online »](#)

Synonyms: HNF-1A; HNF1; LFB1; MODY3; TCF-1; TCF1

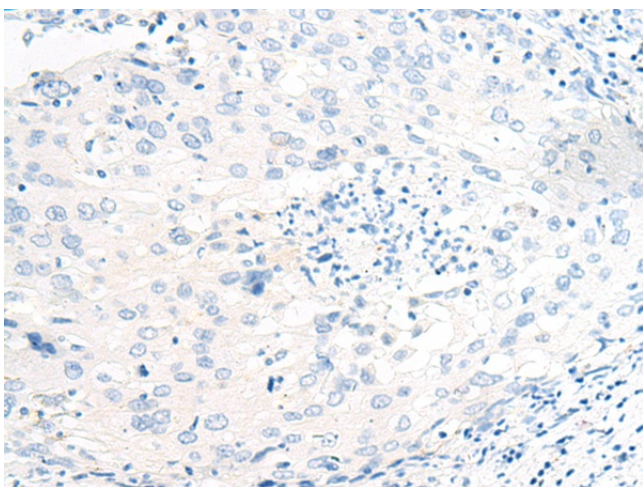
Product images:



Gel: 8%SDS-PAGE
 Lysate: 40 µg
 Lane 1-3: A172 cell
 Mouse liver tissue
 HeLa cell lysates
 Primary antibody: [TA371635] (HNF1A Antibody) at dilution 1/200
 Secondary antibody: Goat anti rabbit IgG at 1/8000 dilution
 Exposure time: 10 seconds



Immunohistochemistry of paraffin-embedded Human cervical cancer tissue using [TA371635] (HNF1A Antibody) at dilution 1/20 (Original magnification: x200)



Immunohistochemistry of paraffin-embedded Human cervical cancer tissue using [TA371635] (HNF1A Antibody) at dilution 1/20, treated with synthetic peptide. (Original magnification: x200)