

## Product datasheet for **TA371630**

### ZNF185 Rabbit Polyclonal Antibody

#### Product data:

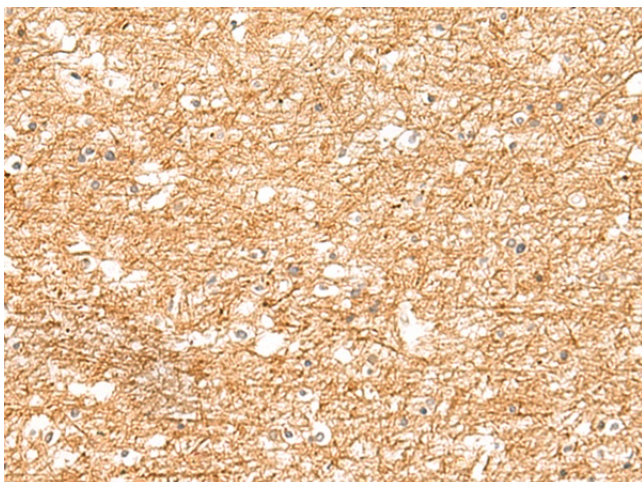
Product Type:	Primary Antibodies
Applications:	IHC
Recommended Dilution:	IHC: 40-200 Positive control: Human brain Predicted cell location: Cytoplasm
Reactivity:	Human
Host:	Rabbit
Isotype:	IgG
Clonality:	Polyclonal
Immunogen:	Synthetic peptide of human ZNF185
Formulation:	pH7.4 PBS, 0.05% NaN <sub>3</sub> , 40% Glycerol
Concentration:	lot specific
Purification:	Antigen affinity purification
Conjugation:	Unconjugated
Storage:	Store at -20°C.
Stability:	1 year
Gene Name:	zinc finger protein 185 (LIM domain)
Database Link:	<a href="#">Entrez Gene 7739 Human O15231</a>

**Background:** Zinc-finger proteins bind nucleic acids and play important roles in various cellular functions, including cell proliferation, differentiation, and apoptosis. This gene encodes a LIM-domain zinc finger protein. The LIM domain is composed of two contiguous zinc finger domains, separated by a two-amino acid residue hydrophobic linker. The LIM domain mediates protein:protein interactions. Multiple alternatively spliced transcript variants encoding different isoforms have been identified.

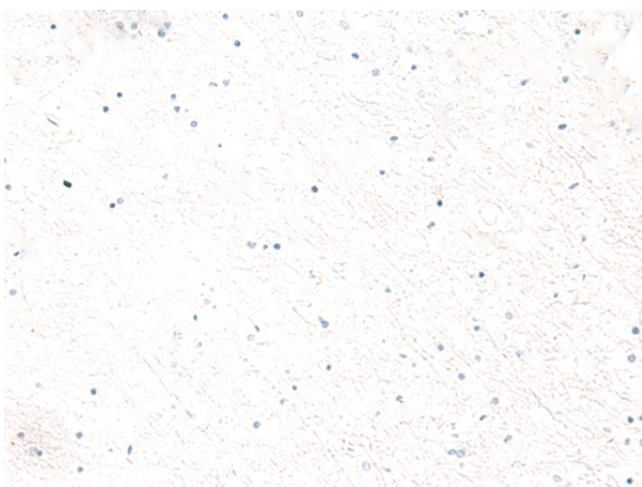
**Synonyms:** P1-A



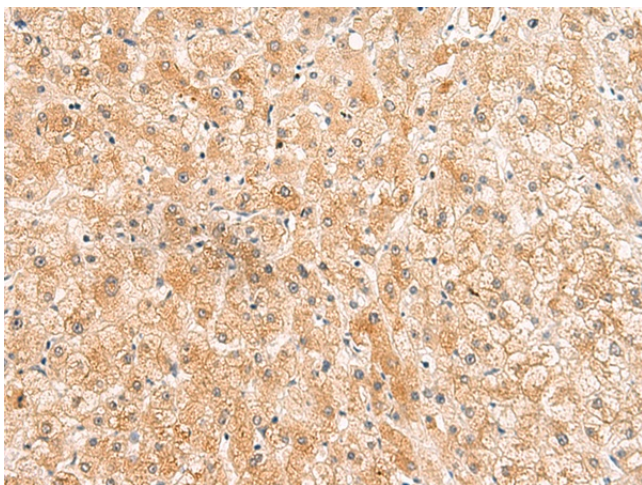
[View online »](#)

**Product images:**

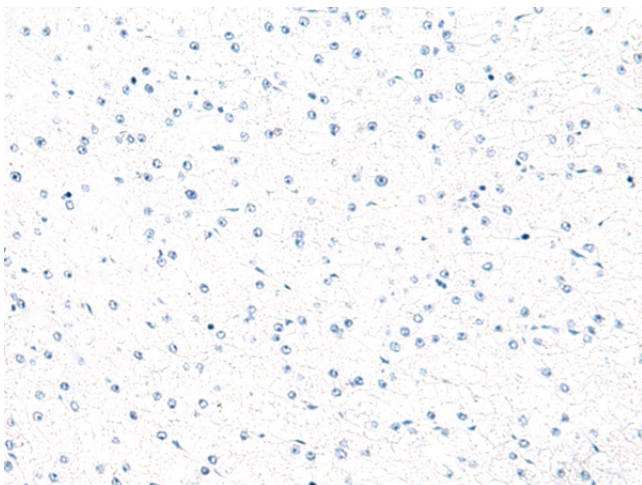
Immunohistochemistry of paraffin-embedded Human brain tissue using TA371630 (ZNF185 Antibody) at dilution 1/25 (Original magnification: ×200)



Immunohistochemistry of paraffin-embedded Human brain tissue using TA371630 (ZNF185 Antibody) at dilution 1/25, treated with synthetic peptide. (Original magnification: ×200)



Immunohistochemistry of paraffin-embedded Human liver cancer tissue using TA371630 (ZNF185 Antibody) at dilution 1/25 (Original magnification:  $\times 200$ )



Immunohistochemistry of paraffin-embedded Human liver cancer tissue using TA371630 (ZNF185 Antibody) at dilution 1/25, treated with synthetic peptide. (Original magnification:  $\times 200$ )