

Product datasheet for **TA371627S**

ZFAND2A Rabbit Polyclonal Antibody

Product data:

Product Type:	Primary Antibodies
Applications:	IHC, WB
Recommended Dilution:	WB: 500-2000 WB positive control: 293T cell lysate IHC: 25-50 Positive control: Human brain Predicted cell location: Cytoplasm
Reactivity:	Human
Host:	Rabbit
Isotype:	IgG
Clonality:	Polyclonal
Immunogen:	Synthetic peptide of human ZFAND2A
Formulation:	pH7.4 PBS, 0.05% NaN ₃ , 40% Glycerol
Concentration:	lot specific
Purification:	Antigen affinity purification
Conjugation:	Unconjugated
Storage:	Store at -20°C.
Stability:	1 year
Predicted Protein Size:	16 kDa
Gene Name:	zinc finger AN1-type containing 2A
Database Link:	Entrez Gene 90637 Human Q8N6M9



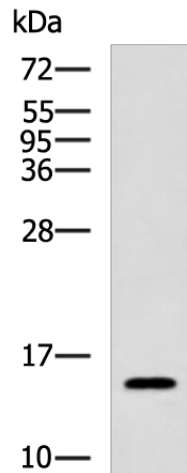
[View online »](#)

Background:

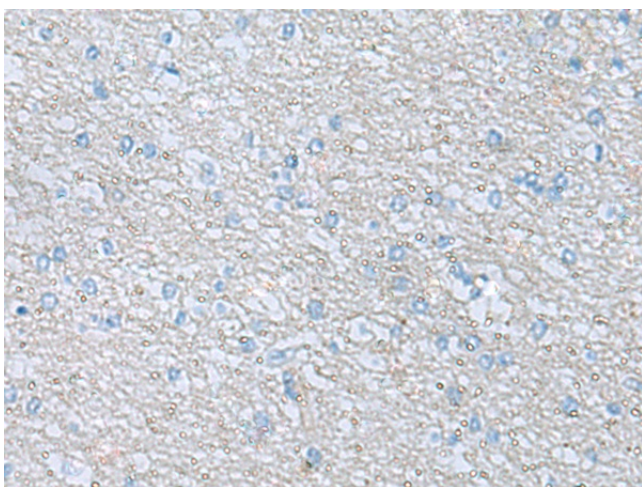
Zinc-finger proteins contain DNA-binding domains and have a wide variety of functions, most of which encompass some form of transcriptional activation or repression. The majority of zinc-finger proteins contain a Krüppel-type DNA binding domain and a KRAB domain, which is thought to interact with KAP1, thereby recruiting histone modifying proteins. ZFAND2A (AN1-type zinc finger protein 2A) is a 171 amino acid protein containing two AN1-type zinc fingers. AN1-type zinc fingers contain six conserved cysteines, two histidines and have a dimetal (zinc)-bound alpha/beta fold. The gene encoding ZFAND2A maps to human chromosome 7, which houses over 1,000 genes and comprises nearly 5% of the human genome. Defects in some of the genes localized to chromosome 7 have been linked to Osteogenesis imperfecta, Williams-Beuren syndrome, Pendred syndrome, Lissencephaly, Citrullinemia and Shwachman-Diamond syndrome.

Synonyms:

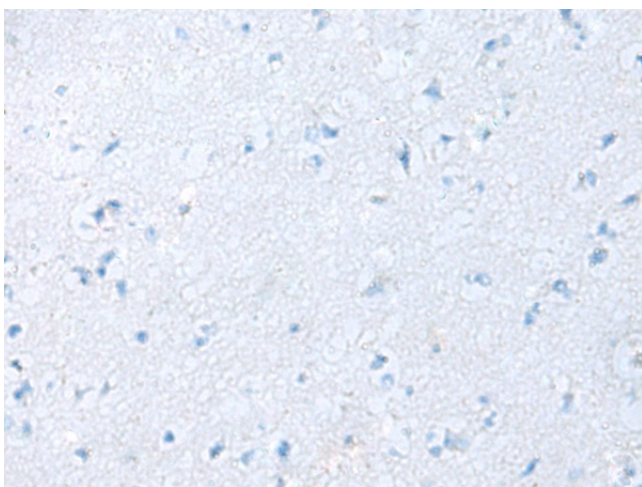
AIRAP

Product images:


Gel: 12%SDS-PAGE
 Lysate: 40 µg
 Lane: 293T cell lysate
 Primary antibody: [TA371627] (ZFAND2A Antibody) at dilution 1/750
 Secondary antibody: Goat anti rabbit IgG at 1/5000 dilution
 Exposure time: 20 seconds



Immunohistochemistry of paraffin-embedded Human brain tissue using [TA371627] (ZFAND2A Antibody) at dilution 1/30 (Original magnification: ×200)



Immunohistochemistry of paraffin-embedded Human brain tissue using [TA371627] (ZFAND2A Antibody) at dilution 1/30, treated with synthetic peptide. (Original magnification: ×200)