

## Product datasheet for **TA371622S**

### WSTF (BAZ1B) Rabbit Polyclonal Antibody

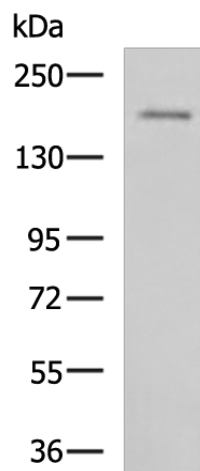
#### Product data:

Product Type:	Primary Antibodies
Applications:	IHC, WB
Recommended Dilution:	WB: 500-2000 WB positive control: SKOV3 cell lysate IHC: 50-200 Positive control: Human gastric cancer Predicted cell location: Nucleus
Reactivity:	Human, Mouse
Host:	Rabbit
Isotype:	IgG
Clonality:	Polyclonal
Immunogen:	Synthetic peptide of human BAZ1B
Formulation:	pH7.4 PBS, 0.05% NaN <sub>3</sub> , 40% Glycerol
Concentration:	lot specific
Purification:	Antigen affinity purification
Conjugation:	Unconjugated
Storage:	Store at -20°C.
Stability:	1 year
Predicted Protein Size:	171 kDa
Gene Name:	bromodomain adjacent to zinc finger domain 1B
Database Link:	<a href="#">Entrez Gene 9031 Human Q9UIG0</a>
Background:	This gene encodes a member of the bromodomain protein family. The bromodomain is a structural motif characteristic of proteins involved in chromatin-dependent regulation of transcription. This gene is deleted in Williams-Beuren syndrome, a developmental disorder caused by deletion of multiple genes at 7q11.23.
Synonyms:	hWALP2; OTTHUMP00000197535; WBSC10; WBSCR9; WBSCR10; WSTF

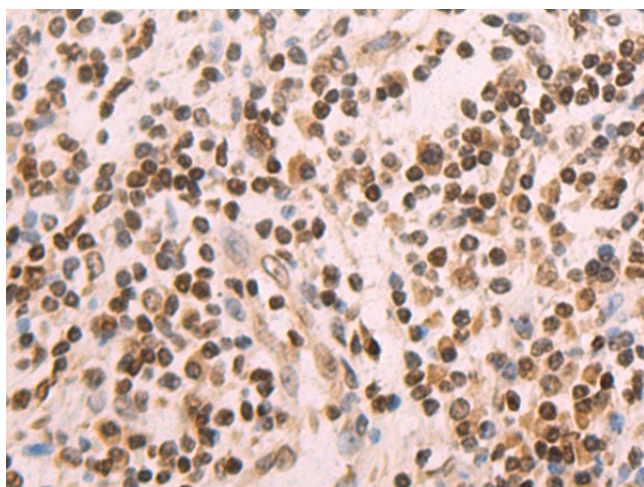


[View online »](#)

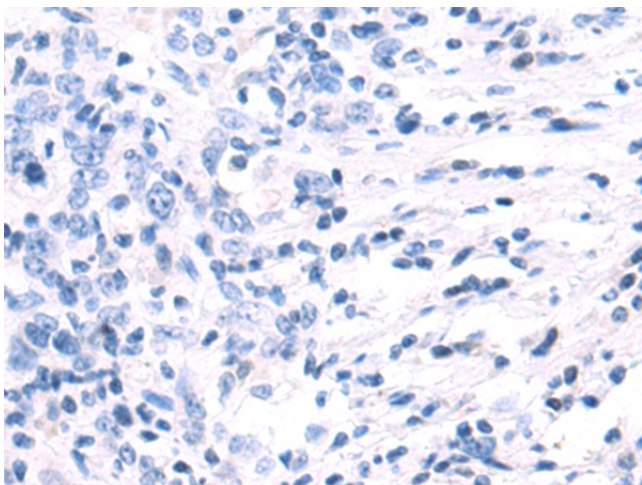
## Product images:



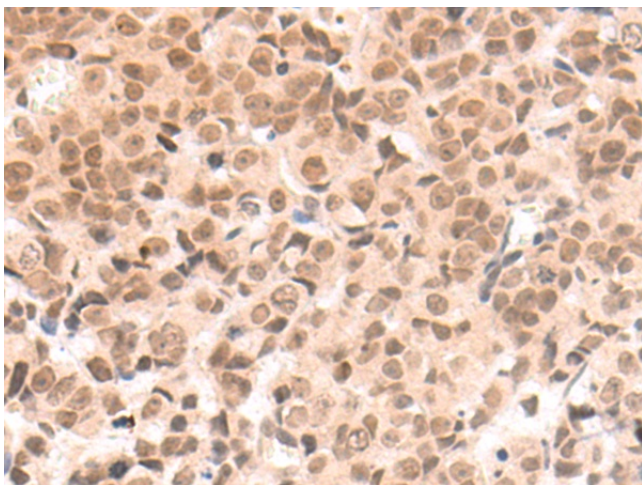
Gel: 6%SDS-PAGE  
Lysate: 40  $\mu$ g  
Lane: SKOV3 cell lysate  
Primary antibody: [TA371622] (BAZ1B Antibody) at dilution 1/800  
Secondary antibody: Goat anti rabbit IgG at 1/5000 dilution  
Exposure time: 10 seconds



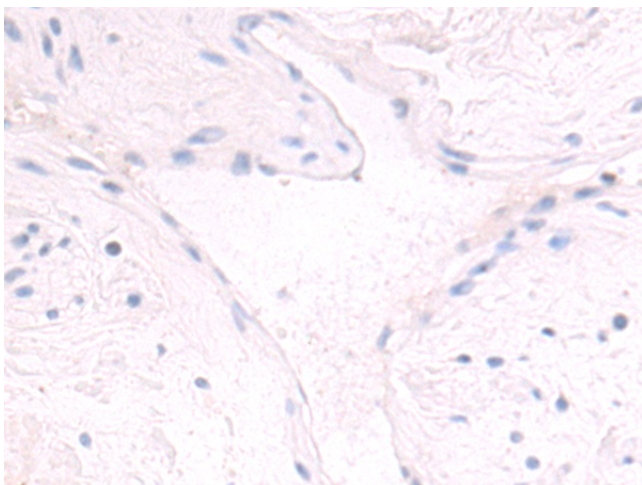
Immunohistochemistry of paraffin-embedded Human gastric cancer tissue using [TA371622] (BAZ1B Antibody) at dilution 1/50 (Original magnification:  $\times$ 200)



Immunohistochemistry of paraffin-embedded Human gastric cancer tissue using [TA371622] (BAZ1B Antibody) at dilution 1/50, treated with synthetic peptide. (Original magnification: ×200)



Immunohistochemistry of paraffin-embedded Human prostate cancer tissue using [TA371622] (BAZ1B Antibody) at dilution 1/50 (Original magnification: ×200)



Immunohistochemistry of paraffin-embedded Human prostate cancer tissue using [TA371622] (BAZ1B Antibody) at dilution 1/50, treated with synthetic peptide. (Original magnification: ×200)