

## Product datasheet for **TA371616S**

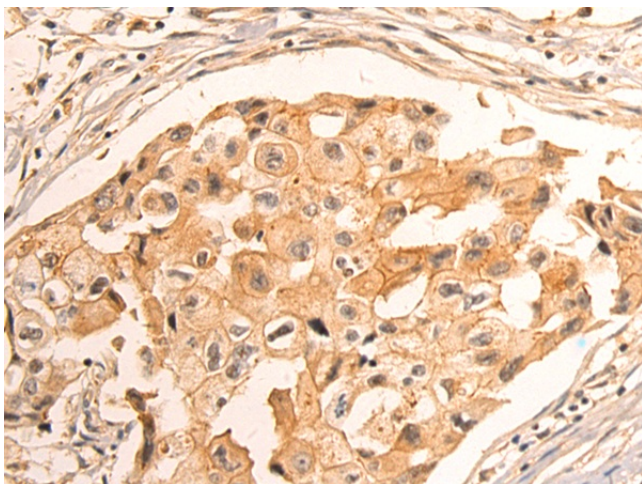
### SLC26A4 Rabbit Polyclonal Antibody

#### Product data:

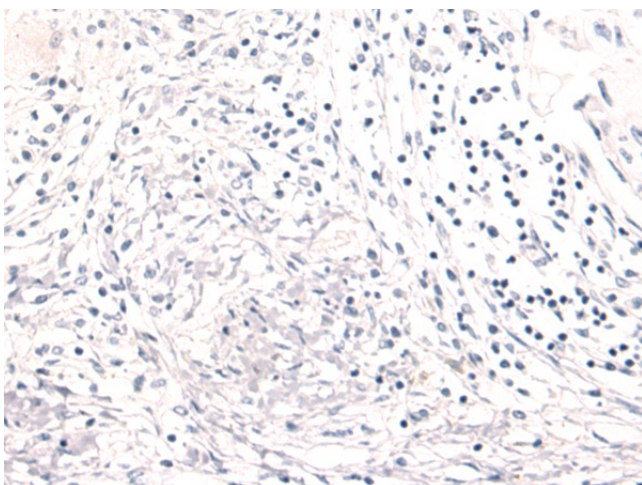
Product Type:	Primary Antibodies
Applications:	IHC
Recommended Dilution:	IHC: 50-200 Positive control: Human breast cancer Predicted cell location: Cell membrane
Reactivity:	Human, Mouse, Rat
Host:	Rabbit
Isotype:	IgG
Clonality:	Polyclonal
Immunogen:	Synthetic peptide of human SLC26A4
Formulation:	pH7.4 PBS, 0.05% NaN <sub>3</sub> , 40% Glycerol
Concentration:	lot specific
Purification:	Antigen affinity purification
Conjugation:	Unconjugated
Storage:	Store at -20°C.
Stability:	1 year
Gene Name:	solute carrier family 26 member 4
Database Link:	<a href="#">Entrez Gene 5172 Human O43511</a>
Background:	Mutations in this gene are associated with Pendred syndrome, the most common form of syndromic deafness, an autosomal-recessive disease. It is highly homologous to the SLC26A3 gene; they have similar genomic structures and this gene is located 3' of the SLC26A3 gene. The encoded protein has homology to sulfate transporters.
Synonyms:	DFNB4; EVA; PDS; pendrin; TDH2B

[View online »](#)

## Product images:



Immunohistochemistry of paraffin-embedded Human breast cancer tissue using [TA371616] (SLC26A4 Antibody) at dilution 1/50 (Original magnification: ×200)



Immunohistochemistry of paraffin-embedded Human breast cancer tissue using [TA371616] (SLC26A4 Antibody) at dilution 1/50, treated with synthetic peptide. (Original magnification: ×200)