

## Product datasheet for **TA371590S**

### UGT1A6 Rabbit Polyclonal Antibody

#### Product data:

Product Type:	Primary Antibodies
Applications:	IHC
Recommended Dilution:	IHC: 25-100 Positive control: Human liver cancer Predicted cell location: Cytoplasm
Reactivity:	Human
Host:	Rabbit
Isotype:	IgG
Clonality:	Polyclonal
Immunogen:	Synthetic peptide of human UGT1A6
Formulation:	pH7.4 PBS, 0.05% NaN <sub>3</sub> , 40% Glycerol
Concentration:	lot specific
Purification:	Antigen affinity purification
Conjugation:	Unconjugated
Storage:	Store at -20°C.
Stability:	1 year
Gene Name:	UDP glucuronosyltransferase family 1 member A6
Database Link:	<a href="#">Entrez Gene 54578 Human P19224</a>



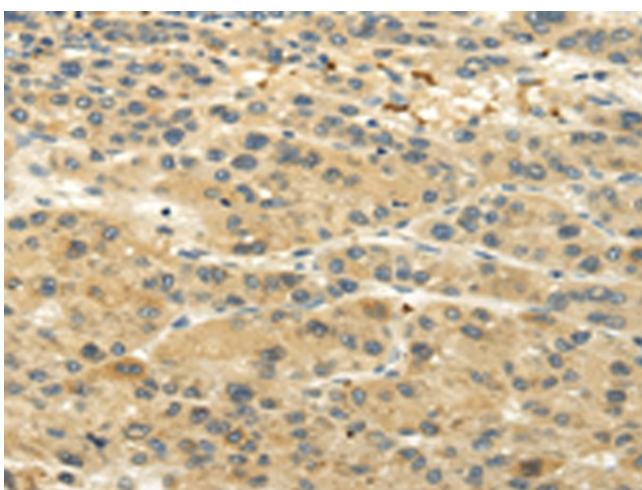
[View online »](#)

**Background:**

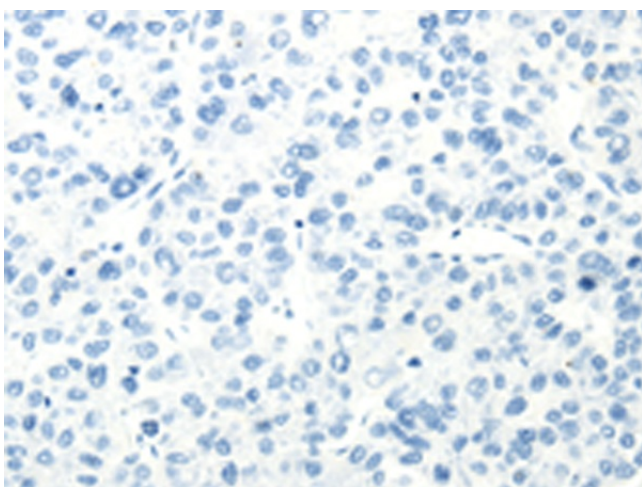
This gene encodes a UDP-glucuronosyltransferase, an enzyme of the glucuronidation pathway that transforms small lipophilic molecules, such as steroids, bilirubin, hormones, and drugs, into water-soluble, excretable metabolites. This gene is part of a complex locus that encodes several UDP-glucuronosyltransferases. The locus includes thirteen unique alternate first exons followed by four common exons. Four of the alternate first exons are considered pseudogenes. Each of the remaining nine 5' exons may be spliced to the four common exons, resulting in nine proteins with different N-termini and identical C-termini. Each first exon encodes the substrate binding site, and is regulated by its own promoter. The enzyme encoded by this gene is active on phenolic and planar compounds. Alternative splicing in the unique 5' end of this gene results in two transcript variants.

**Synonyms:**

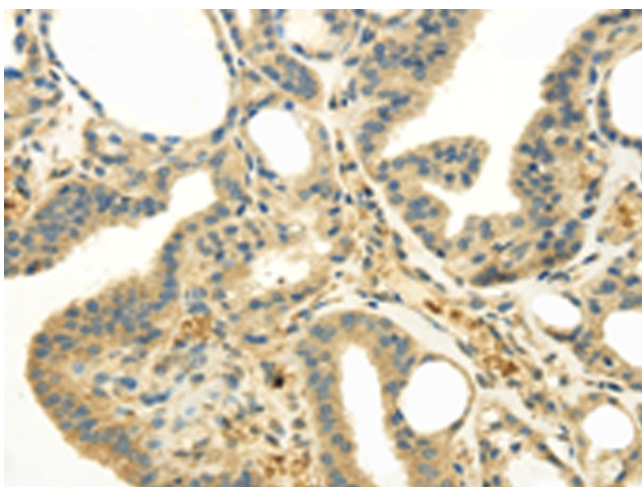
GNT1; HLUGP; HLUGP1; MGC29860; OTTHUMP00000065199; UDPGT; UGT-1F; UGT1; UGT1\*6; UGT1-06; UGT1.6; UGT1A6S; UGT1F

**Product images:**

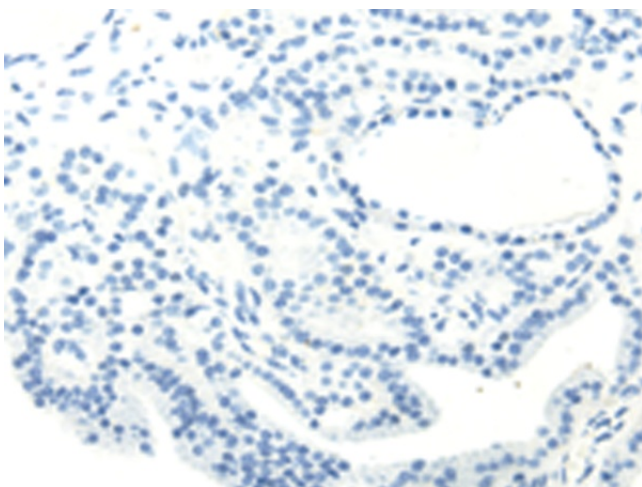
Immunohistochemistry of paraffin-embedded Human liver cancer tissue using [TA371590] (UGT1A6 Antibody) at dilution 1/20 (Original magnification:  $\times 200$ )



Immunohistochemistry of paraffin-embedded Human liver cancer tissue using [TA371590] (UGT1A6 Antibody) at dilution 1/20, treated with synthetic peptide. (Original magnification:  $\times 200$ )



Immunohistochemistry of paraffin-embedded Human thyroid cancer tissue using [TA371590] (UGT1A6 Antibody) at dilution 1/20 (Original magnification:  $\times 200$ )



Immunohistochemistry of paraffin-embedded Human thyroid cancer tissue using [TA371590] (UGT1A6 Antibody) at dilution 1/20, treated with synthetic peptide. (Original magnification:  $\times 200$ )