

Product datasheet for **TA371586S**

UBA1 Rabbit Polyclonal Antibody

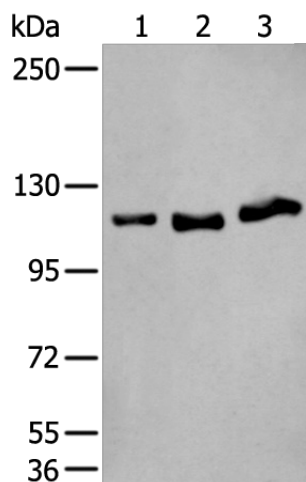
Product data:

Product Type:	Primary Antibodies
Applications:	IHC, WB
Recommended Dilution:	WB: 500-2000 WB positive control: 293T, Hela and Hepg2 cell lysates IHC: 25-100 Positive control: Human breast cancer Predicted cell location: Nucleus
Reactivity:	Human, Mouse, Rat
Host:	Rabbit
Isotype:	IgG
Clonality:	Polyclonal
Immunogen:	Synthetic peptide of human UBA1
Formulation:	pH7.4 PBS, 0.05% NaN ₃ , 40% Glycerol
Concentration:	lot specific
Purification:	Antigen affinity purification
Conjugation:	Unconjugated
Storage:	Store at -20°C.
Stability:	1 year
Predicted Protein Size:	118 kDa
Gene Name:	ubiquitin like modifier activating enzyme 1
Database Link:	Entrez Gene 7317 Human P22314
Background:	The protein encoded by this gene catalyzes the first step in ubiquitin conjugation to mark cellular proteins for degradation. This gene complements an X-linked mouse temperature-sensitive defect in DNA synthesis, and thus may function in DNA repair. It is part of a gene cluster on chromosome Xp11.23. Alternatively spliced transcript variants that encode the same protein have been described.
Synonyms:	A1S9; A1S9T; A1ST; AMCX1; GXP1; MGC4781; SMAX2; UBA1A; UBE1; UBE1X

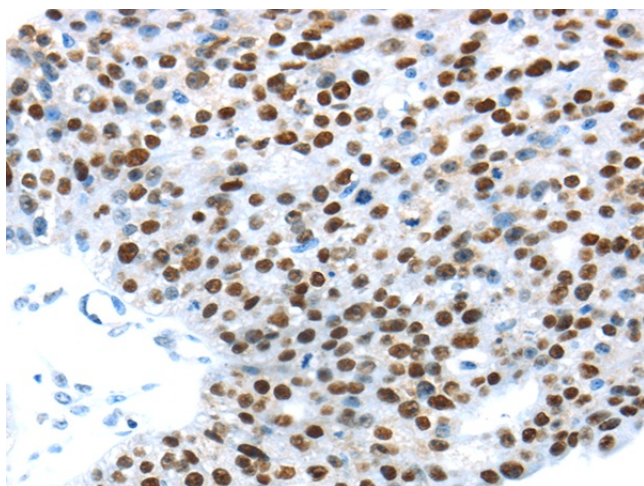


[View online »](#)

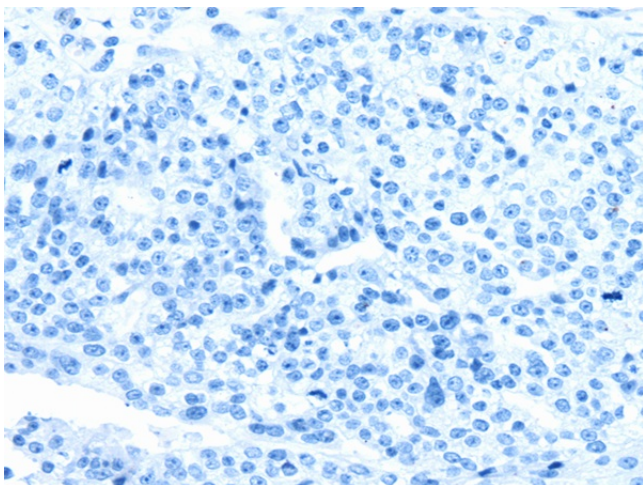
Product images:



Gel: 6%SDS-PAGE
Lysate: 40 μ g
Lane 1-3: 293T
Hela and Hepg2 cell lysates
Primary antibody: [TA371586] (UBA1 Antibody) at dilution 1/400
Secondary antibody: Goat anti rabbit IgG at 1/8000 dilution
Exposure time: 15 seconds



Immunohistochemistry of paraffin-embedded Human breast cancer tissue using [TA371586] (UBA1 Antibody) at dilution 1/30 (Original magnification: \times 200)



Immunohistochemistry of paraffin-embedded Human breast cancer tissue using [TA371586] (UBA1 Antibody) at dilution 1/30, treated with synthetic peptide. (Original magnification: $\times 200$)