

## Product datasheet for **TA371581S**

### TSPYL6 Rabbit Polyclonal Antibody

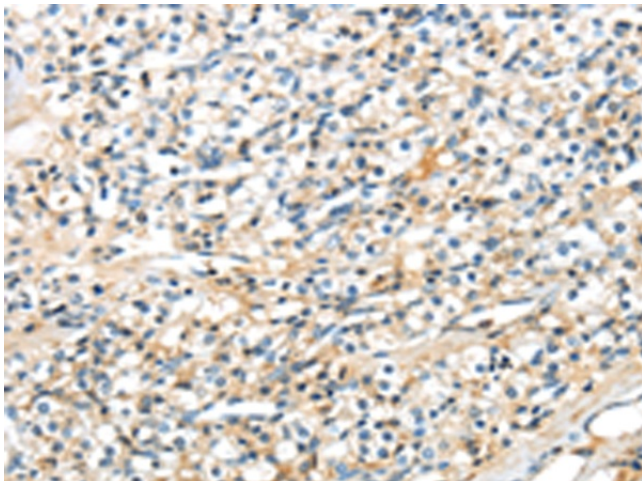
#### Product data:

Product Type:	Primary Antibodies
Applications:	IHC
Recommended Dilution:	IHC: 25-100 Positive control: Human prostate cancer Predicted cell location: Cytoplasm
Reactivity:	Human
Host:	Rabbit
Isotype:	IgG
Clonality:	Polyclonal
Immunogen:	Synthetic peptide of human TSPYL6
Formulation:	pH7.4 PBS, 0.05% NaN <sub>3</sub> , 40% Glycerol
Concentration:	lot specific
Purification:	Antigen affinity purification
Conjugation:	Unconjugated
Storage:	Store at -20°C.
Stability:	1 year
Gene Name:	TSPY-like 6
Database Link:	<a href="#">Entrez Gene 388951 Human Q8N831</a>

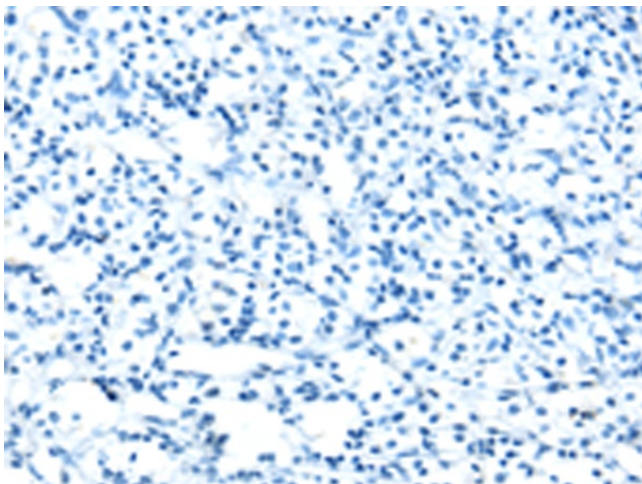
**Background:** TSPYL6 (Testis-specific Y-encoded-like protein 6) is a 410 amino acid member of the nucleosome assembly protein (NAP) family. TSPYL6 is believed to be similar to Testis-specific Y-encoded protein 1 in form and function. The gene that encodes TSPYL6 is found on chromosome 2 which consists of 237 million bases encoding over 1,400 genes and making up approximately 8% of the human genome. A number of genetic diseases are linked to genes on chromosome 2. The lipid metabolic disorder sitosterolemia is associated with ABCG5 and ABCG8. An extremely rare recessive genetic disorder, Alström syndrome is due to mutations in the ALMS1 gene.

**Synonyms:** DKFZp434B125

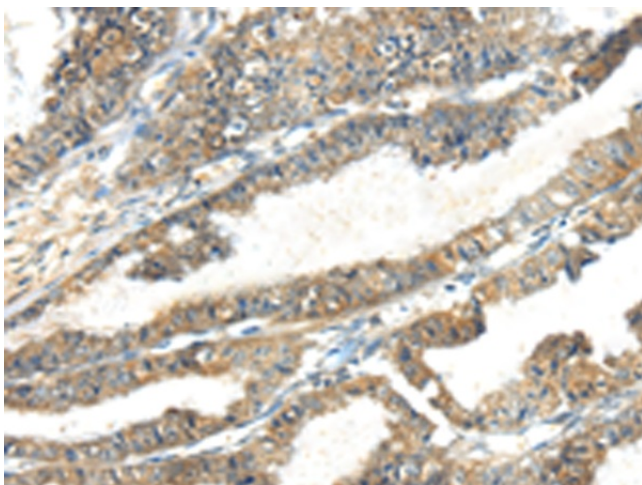
[View online »](#)

**Product images:**

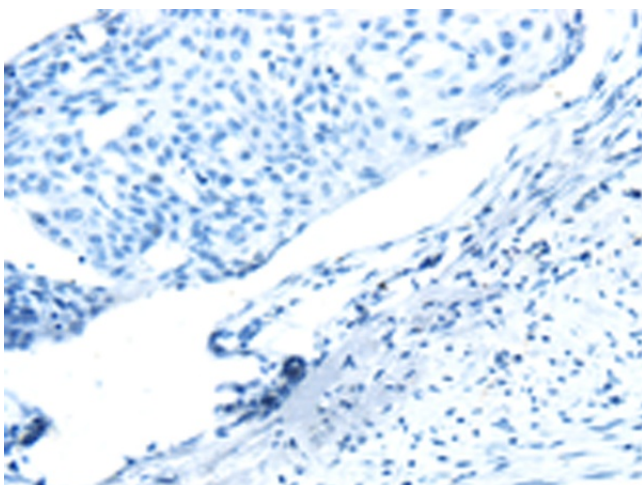
Immunohistochemistry of paraffin-embedded Human prostate cancer tissue using [TA371581] (TSPYL6 Antibody) at dilution 1/20 (Original magnification: ×200)



Immunohistochemistry of paraffin-embedded Human prostate cancer tissue using [TA371581] (TSPYL6 Antibody) at dilution 1/20, treated with synthetic peptide. (Original magnification: ×200)



Immunohistochemistry of paraffin-embedded Human esophagus cancer tissue using [TA371581] (TSPYL6 Antibody) at dilution 1/20 (Original magnification: ×200)



Immunohistochemistry of paraffin-embedded Human esophagus cancer tissue using [TA371581] (TSPYL6 Antibody) at dilution 1/20, treated with synthetic peptide. (Original magnification: ×200)