

Product datasheet for **TA371574**

tenomodulin (TNMD) Rabbit Polyclonal Antibody

Product data:

Product Type:	Primary Antibodies
Applications:	IHC, WB
Recommended Dilution:	WB: 500-2000 WB positive control: Human fetal liver tissue lysate IHC: 25-100 Positive control: Human liver cancer Predicted cell location: Cytoplasm and Cell membrane
Reactivity:	Human, Mouse, Rat
Host:	Rabbit
Isotype:	IgG
Clonality:	Polyclonal
Immunogen:	Synthetic peptide of human TNMD
Formulation:	pH7.4 PBS, 0.05% NaN ₃ , 40% Glycerol
Concentration:	lot specific
Purification:	Antigen affinity purification
Conjugation:	Unconjugated
Storage:	Store at -20°C.
Stability:	1 year
Predicted Protein Size:	37 kDa
Gene Name:	tenomodulin
Database Link:	Entrez Gene 64102 Human Q9H2S6

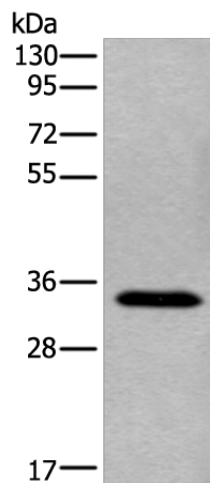
Background: This gene encodes a protein that is related to chondromodulin-I, which is a cartilage-specific glycoprotein that functions to stimulate chondrocyte growth and to inhibit tube formation of endothelial cells. This protein is also an angiogenesis inhibitor. Genetic variation in this gene is associated with a risk for type 2 diabetes, central obesity and serum levels of systemic immune mediators in a body size-dependent manner. This gene is also a candidate gene for age-related macular degeneration, though a direct link has yet to be demonstrated.



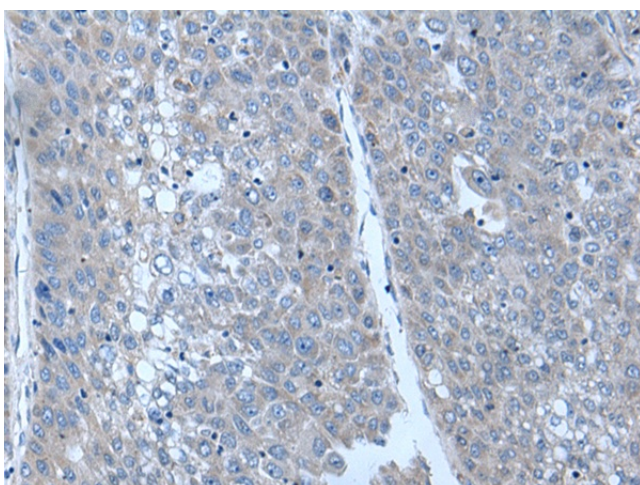
[View online »](#)

Synonyms: BRICD4; CHM1-like; CHM1L; chondromodulin-IB; hChM1L; hTeM; myodulin; TEM; tendin; tenomodulin

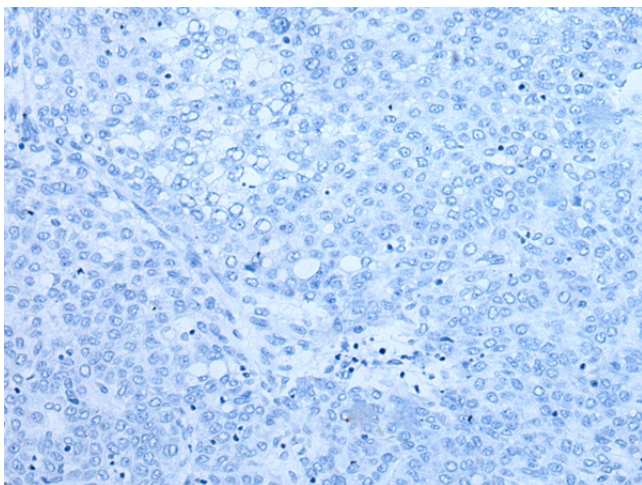
Product images:



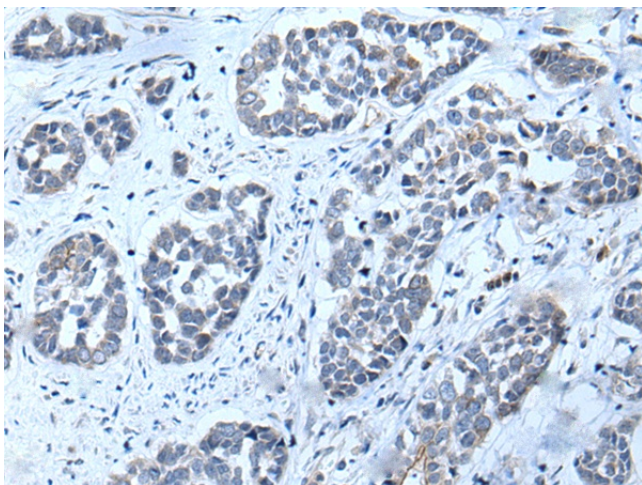
Gel: 8%SDS-PAGE
 Lysate: 40 µg
 Lane: Human fetal liver tissue lysate
 Primary antibody: TA371574 (TNMD Antibody) at dilution 1/250
 Secondary antibody: Goat anti rabbit IgG at 1/8000 dilution
 Exposure time: 20 seconds



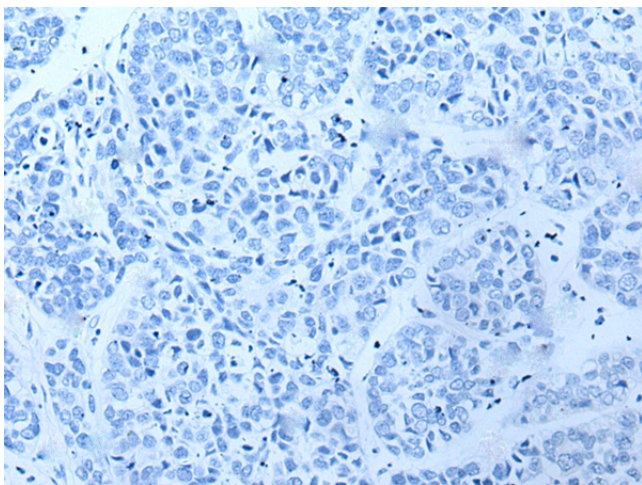
Immunohistochemistry of paraffin-embedded Human liver cancer tissue using TA371574 (TNMD Antibody) at dilution 1/25 (Original magnification: ×200)



Immunohistochemistry of paraffin-embedded Human liver cancer tissue using TA371574 (TNMD Antibody) at dilution 1/25, treated with synthetic peptide. (Original magnification: x200)



Immunohistochemistry of paraffin-embedded Human esophagus cancer tissue using TA371574 (TNMD Antibody) at dilution 1/25 (Original magnification: x200)



Immunohistochemistry of paraffin-embedded Human esophagus cancer tissue using TA371574 (TNMD Antibody) at dilution 1/25, treated with synthetic peptide. (Original magnification: x200)