

Product datasheet for **TA371567**

Tissue Factor (F3) Rabbit Polyclonal Antibody

Product data:

Product Type:	Primary Antibodies
Applications:	IHC
Recommended Dilution:	IHC: 40-250 Positive control: Human tonsil Predicted cell location: Cytoplasm and Cell membrane
Reactivity:	Human
Host:	Rabbit
Isotype:	IgG
Clonality:	Polyclonal
Immunogen:	Synthetic peptide of human F3
Formulation:	pH7.4 PBS, 0.05% NaN ₃ , 40% Glycerol
Concentration:	lot specific
Purification:	Antigen affinity purification
Conjugation:	Unconjugated
Storage:	Store at -20°C.
Stability:	1 year
Gene Name:	coagulation factor III, tissue factor
Database Link:	Entrez Gene 2152 Human P13726

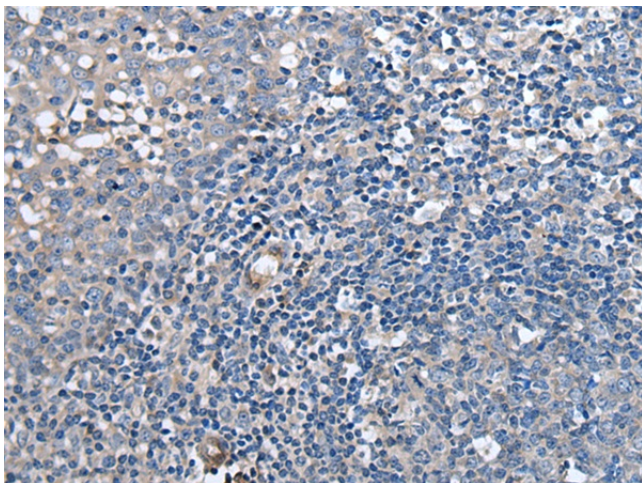
Background: This gene encodes coagulation factor III which is a cell surface glycoprotein. This factor enables cells to initiate the blood coagulation cascades, and it functions as the high-affinity receptor for the coagulation factor VII. The resulting complex provides a catalytic event that is responsible for initiation of the coagulation protease cascades by specific limited proteolysis. Unlike the other cofactors of these protease cascades, which circulate as nonfunctional precursors, this factor is a potent initiator that is fully functional when expressed on cell surfaces. There are 3 distinct domains of this factor: extracellular, transmembrane, and cytoplasmic. This protein is the only one in the coagulation pathway for which a congenital deficiency has not been described. Alternate splicing results in multiple transcript variants.



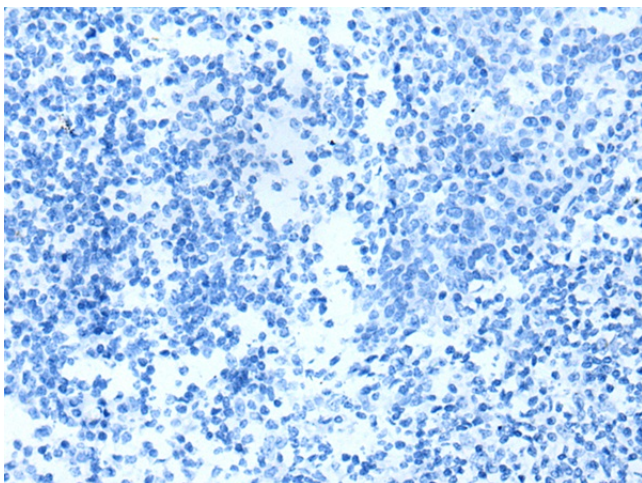
[View online »](#)

Synonyms: CD142; TF; TFA; Thromboplastin

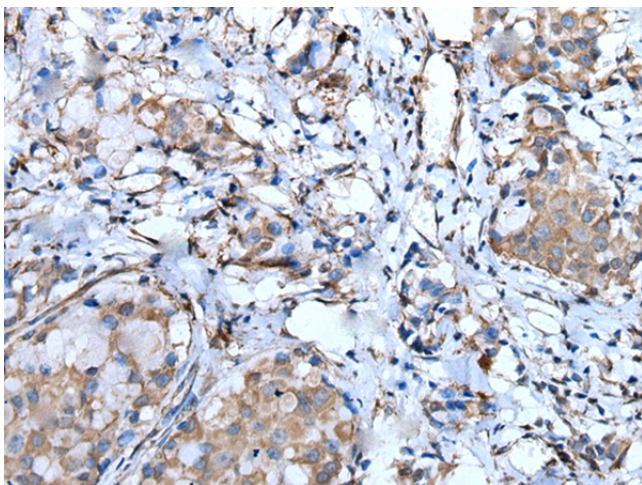
Product images:



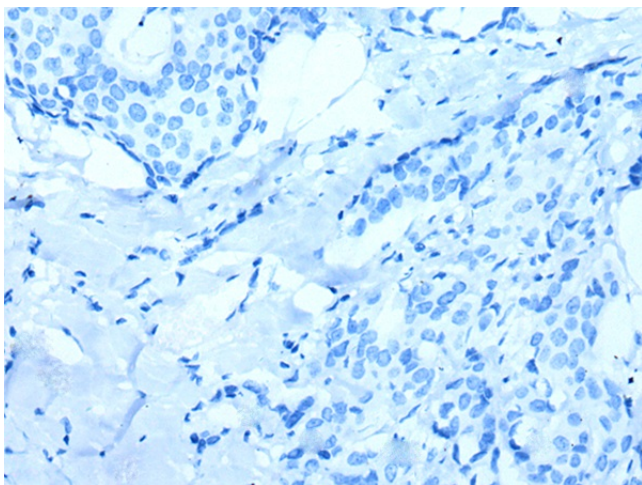
Immunohistochemistry of paraffin-embedded Human tonsil tissue using TA371567 (F3 Antibody) at dilution 1/60 (Original magnification: ×200)



Immunohistochemistry of paraffin-embedded Human tonsil tissue using TA371567 (F3 Antibody) at dilution 1/60, treated with synthetic peptide. (Original magnification: ×200)



Immunohistochemistry of paraffin-embedded Human breast cancer tissue using TA371567 (F3 Antibody) at dilution 1/60 (Original magnification: ×200)



Immunohistochemistry of paraffin-embedded Human breast cancer tissue using TA371567 (F3 Antibody) at dilution 1/60, treated with synthetic peptide. (Original magnification: ×200)