

## Product datasheet for **TA371555S**

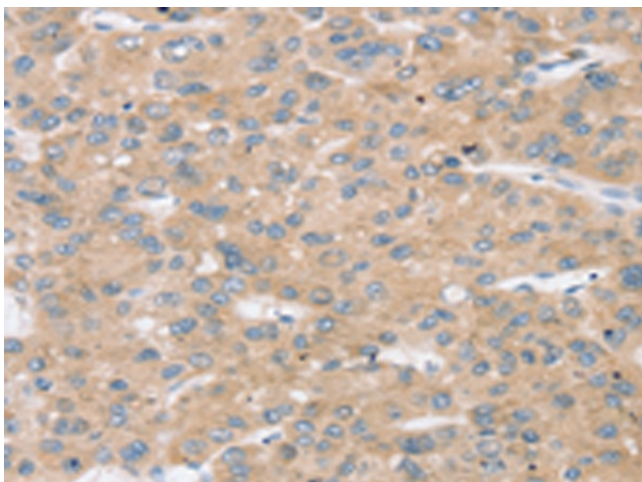
### **TBC1D4 Rabbit Polyclonal Antibody**

#### **Product data:**

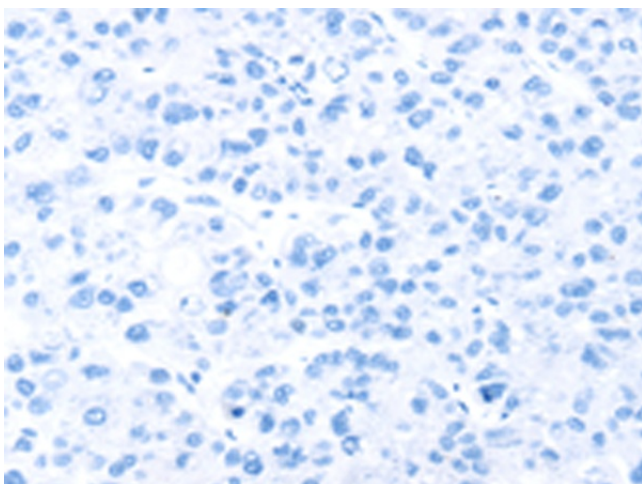
Product Type:	Primary Antibodies
Applications:	IHC
Recommended Dilution:	IHC: 25-100 Positive control: Human liver cancer Predicted cell location: Cytoplasm and Cell membrane
Reactivity:	Human, Mouse
Host:	Rabbit
Isotype:	IgG
Clonality:	Polyclonal
Immunogen:	Synthetic peptide of human TBC1D4
Formulation:	pH7.4 PBS, 0.05% NaN <sub>3</sub> , 40% Glycerol
Concentration:	lot specific
Purification:	Antigen affinity purification
Conjugation:	Unconjugated
Storage:	Store at -20°C.
Stability:	1 year
Gene Name:	TBC1 domain family member 4
Database Link:	<a href="#">Entrez Gene 9882 Human O60343</a>
Background:	TBC1 domain family member 4 (TBC1D4), also designated AS160, can be insulin- and/or AKT1-induced. Insulin-stimulated phosphorylation is required for GLUT4 translocation. TBC1D4 may play a role as a GTPase activating protein for proteins in the Rab family. It is expressed primarily in skeletal muscle and heart, as well as spleen, lymph node and leukocytes. Defects in the TBC1D4 gene may cause atopic dermatitis (AD), sometimes referred to as eczema, an atopic chronic skin disease. The skin of affected individuals reacts to irritants or allergens and becomes red, flaky and itchy. The skin is also more vulnerable to inflammations, and symptoms can grow or disappear over time.
Synonyms:	5930406J04Rik; A930035N22; As160; AV295684



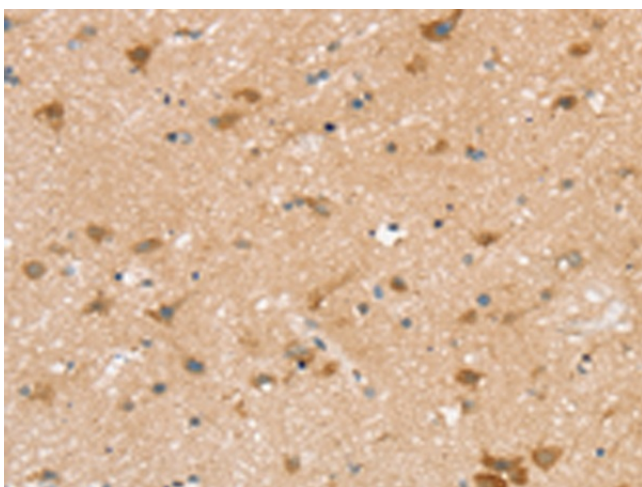
[View online »](#)

**Product images:**

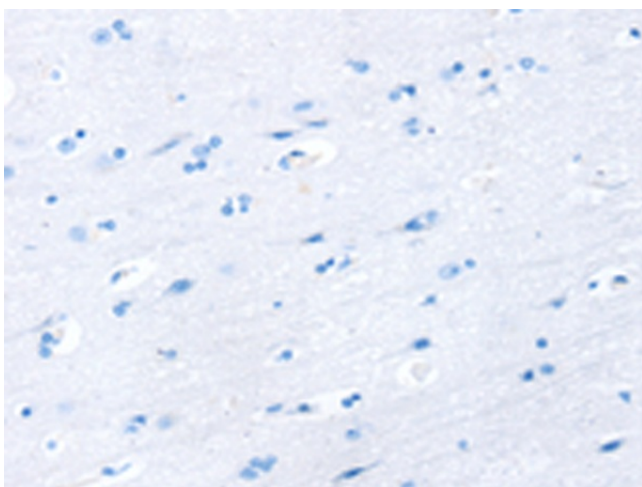
Immunohistochemistry of paraffin-embedded Human liver cancer tissue using [TA371555] (TBC1D4 Antibody) at dilution 1/30 (Original magnification:  $\times 200$ )



Immunohistochemistry of paraffin-embedded Human liver cancer tissue using [TA371555] (TBC1D4 Antibody) at dilution 1/30, treated with synthetic peptide. (Original magnification:  $\times 200$ )



Immunohistochemistry of paraffin-embedded Human brain tissue using [TA371555] (TBC1D4 Antibody) at dilution 1/30 (Original magnification: ×200)



Immunohistochemistry of paraffin-embedded Human brain tissue using [TA371555] (TBC1D4 Antibody) at dilution 1/30, treated with synthetic peptide. (Original magnification: ×200)