

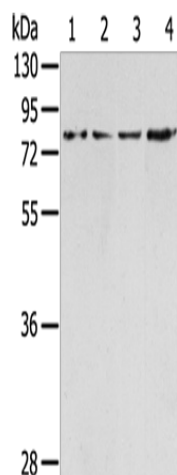
Product datasheet for **TA371553S**

TAF15 Rabbit Polyclonal Antibody

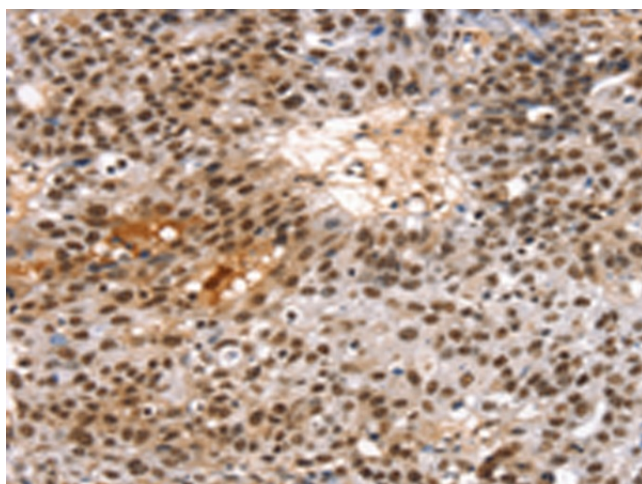
Product data:

Product Type:	Primary Antibodies
Applications:	IHC, WB
Recommended Dilution:	WB: 500-2000 WB positive control: A431, Raji, hepg2 and hela cells IHC: 25-100 Positive control: Human breast cancer Predicted cell location: Nucleus
Reactivity:	Human
Host:	Rabbit
Isotype:	IgG
Clonality:	Polyclonal
Immunogen:	Synthetic peptide of human TAF15
Formulation:	pH7.4 PBS, 0.05% NaN ₃ , 40% Glycerol
Concentration:	lot specific
Purification:	Antigen affinity purification
Conjugation:	Unconjugated
Storage:	Store at -20°C.
Stability:	1 year
Predicted Protein Size:	62 kDa
Gene Name:	TATA-box binding protein associated factor 15
Database Link:	Entrez Gene 8148 Human Q92804
Background:	This gene encodes a member of the TET family of RNA-binding proteins. The encoded protein plays a role in RNA polymerase II gene transcription as a component of a distinct subset of multi-subunit transcription initiation factor TFIID complexes. Translocations involving this gene play a role in acute leukemia and extraskeletal myxoid chondrosarcoma, and mutations in this gene may play a role in amyotrophic lateral sclerosis.
Synonyms:	hTAFII68; Npl3; RBP56; TAF(II)68; TAF2N; TAFII68

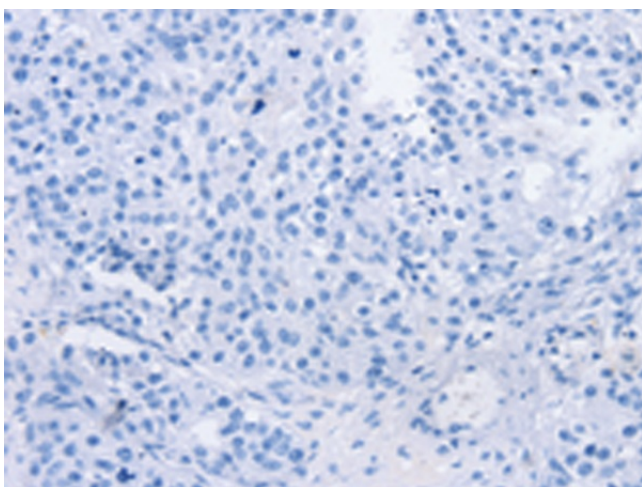

[View online »](#)

Product images:


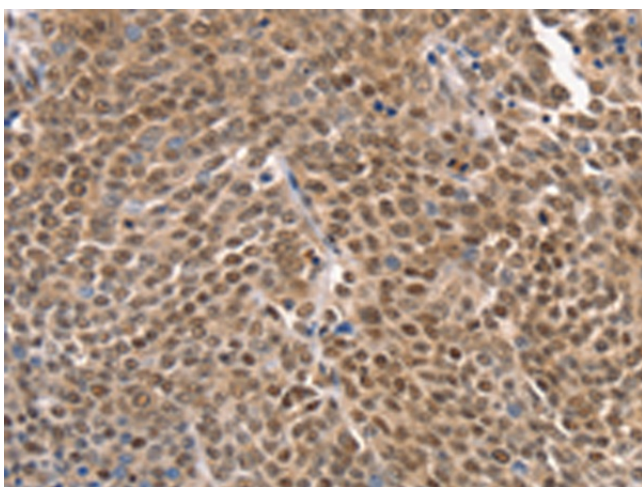
Gel: 8%SDS-PAGE
 Lysate: 40 µg
 Lane 1-4: A431 cells
 Raji cells
 hepg2 cells
 hela cells
 Primary antibody: [TA371553] (TAF15 Antibody) at dilution 1/350
 Secondary antibody: Goat anti rabbit IgG at 1/8000 dilution
 Exposure time: 10 seconds



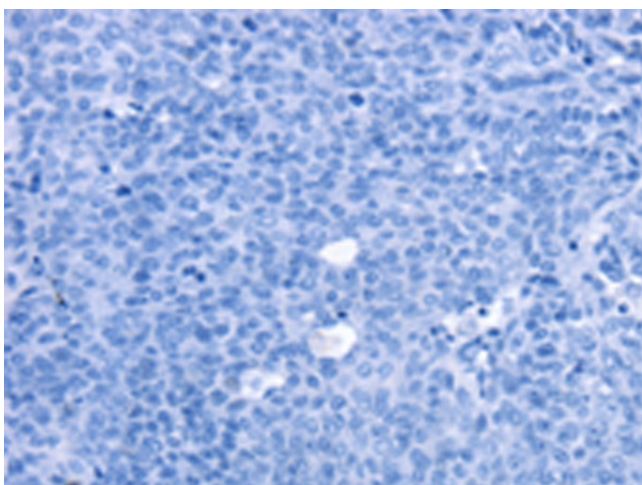
Immunohistochemistry of paraffin-embedded Human breast cancer tissue using [TA371553] (TAF15 Antibody) at dilution 1/20 (Original magnification: ×200)



Immunohistochemistry of paraffin-embedded Human breast cancer tissue using [TA371553] (TAF15 Antibody) at dilution 1/20, treated with synthetic peptide. (Original magnification: ×200)



Immunohistochemistry of paraffin-embedded Human ovarian cancer tissue using [TA371553] (TAF15 Antibody) at dilution 1/20 (Original magnification: ×200)



Immunohistochemistry of paraffin-embedded Human ovarian cancer tissue using [TA371553] (TAF15 Antibody) at dilution 1/20, treated with synthetic peptide. (Original magnification: ×200)