

## Product datasheet for **TA371549S**

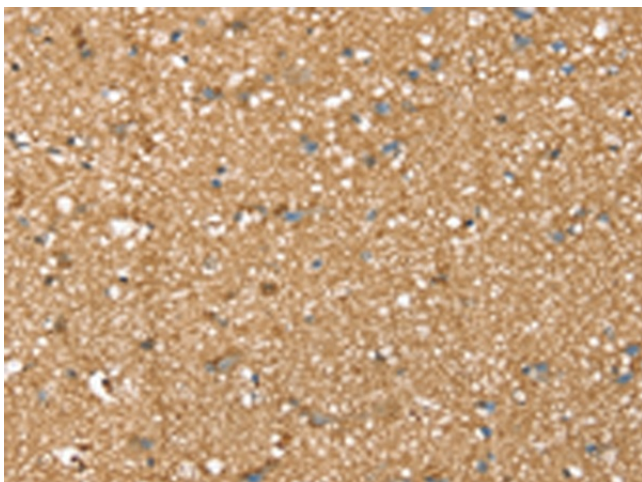
### Syndecan 3 (SDC3) Rabbit Polyclonal Antibody

#### Product data:

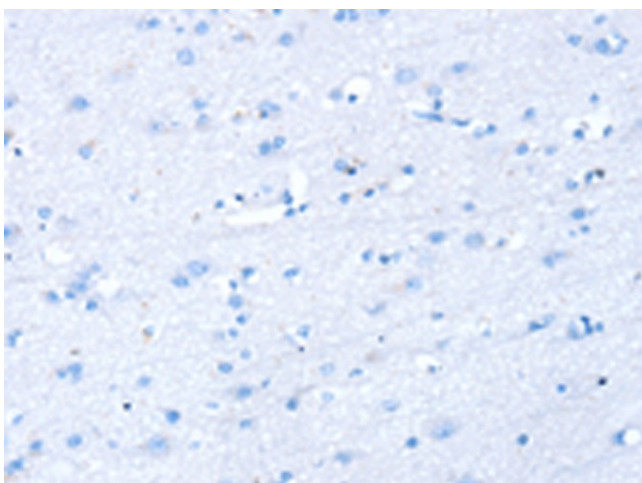
Product Type:	Primary Antibodies
Applications:	IHC
Recommended Dilution:	IHC: 40-150 Positive control: Human brain Predicted cell location: Cytoplasm and Cell membrane
Reactivity:	Human, Mouse, Rat
Host:	Rabbit
Isotype:	IgG
Clonality:	Polyclonal
Immunogen:	Synthetic peptide of human SDC3
Formulation:	pH7.4 PBS, 0.05% NaN <sub>3</sub> , 40% Glycerol
Concentration:	lot specific
Purification:	Antigen affinity purification
Conjugation:	Unconjugated
Storage:	Store at -20°C.
Stability:	1 year
Gene Name:	syndecan 3
Database Link:	<a href="#">Entrez Gene 9672 Human O75056</a>
Background:	The protein encoded by this gene belongs to the syndecan proteoglycan family. It may play a role in the organization of cell shape by affecting the actin cytoskeleton, possibly by transferring signals from the cell surface in a sugar-dependent mechanism. Allelic variants of this gene have been associated with obesity.
Synonyms:	KIAA0468; N-syndecan; SDCN; SYND3



[View online »](#)

**Product images:**

Immunohistochemistry of paraffin-embedded Human brain tissue using [TA371549] (SDC3 Antibody) at dilution 1/45 (Original magnification: ×200)



Immunohistochemistry of paraffin-embedded Human brain tissue using [TA371549] (SDC3 Antibody) at dilution 1/45, treated with synthetic peptide. (Original magnification: ×200)