

## Product datasheet for **TA371541S**

### SPATA18 Rabbit Polyclonal Antibody

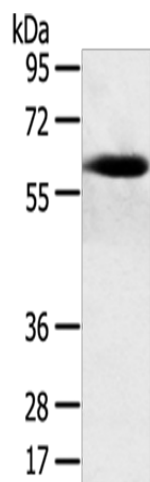
#### Product data:

Product Type:	Primary Antibodies
Applications:	WB
Recommended Dilution:	WB: 500-2000 WB positive control: Human normal stomach tissue
Reactivity:	Human
Host:	Rabbit
Isotype:	IgG
Clonality:	Polyclonal
Immunogen:	Synthetic peptide of human SPATA18
Formulation:	pH7.4 PBS, 0.05% NaN <sub>3</sub> , 40% Glycerol
Concentration:	lot specific
Purification:	Antigen affinity purification
Conjugation:	Unconjugated
Storage:	Store at -20°C.
Stability:	1 year
Predicted Protein Size:	61 kDa
Gene Name:	spermatogenesis associated 18
Database Link:	<a href="#">Entrez Gene 132671 Human Q8TC71</a>
Background:	SPATA18 (spermatogenesis associated 18), also known as Mieap or SPETEX1, is a 538 amino acid protein that is thought to play a role in cell differentiation during spermatogenesis, particularly during development from late elongate spermatids to mature spermatozoa. Localizing to cytoplasm, SPATA18 is encoded by a gene that maps to human chromosome 4q12.
Synonyms:	FLJ32906; SPETEX1



[View online »](#)

## Product images:



Gel: 8%SDS-PAGE

Lysate: 40  $\mu$ g

Lane: Human normal stomach tissue

Primary antibody: [TA371541] (SPATA18 Antibody) at dilution 1/250

Secondary antibody: Goat anti rabbit IgG at 1/8000 dilution

Exposure time: 5 minutes