

Product datasheet for **TA371533S**

Gemin 1 (SMN2) Rabbit Polyclonal Antibody

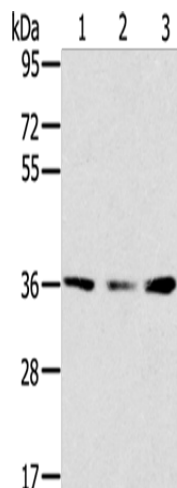
Product data:

Product Type:	Primary Antibodies
Applications:	WB
Recommended Dilution:	WB: 200-1000 WB positive control: Hepg2, hela and 293T cells
Reactivity:	Human
Host:	Rabbit
Isotype:	IgG
Clonality:	Polyclonal
Immunogen:	Synthetic peptide of human SMN1
Formulation:	pH7.4 PBS, 0.05% NaN ₃ , 40% Glycerol
Concentration:	lot specific
Purification:	Antigen affinity purification
Conjugation:	Unconjugated
Storage:	Store at -20°C.
Stability:	1 year
Predicted Protein Size:	32 kDa
Gene Name:	survival of motor neuron 2, centromeric
Database Link:	Entrez Gene 6607 Human Q16637
Background:	This gene is part of a 500 kb inverted duplication on chromosome 5q13. This duplicated region contains at least four genes and repetitive elements which make it prone to rearrangements and deletions. The repetitiveness and complexity of the sequence have also caused difficulty in determining the organization of this genomic region. The telomeric and centromeric copies of this gene are nearly identical and encode the same protein.
Synonyms:	BCD541; C-BCD541; FLJ76644; Gemin-1; MGC5208; MGC20996; SMN; SMNC; SMNT



[View online »](#)

Product images:



Gel: 8%SDS-PAGE
Lysate: 40 µg
Lane 1-3: Hepg2 cells
hela cells
293T cells
Primary antibody: [TA371533] (SMN1 Antibody) at
dilution 1/200
Secondary antibody: Goat anti rabbit IgG at
1/8000 dilution
Exposure time: 5 minutes