

Product datasheet for **TA371532S**

SMC6L1 (SMC6) Rabbit Polyclonal Antibody

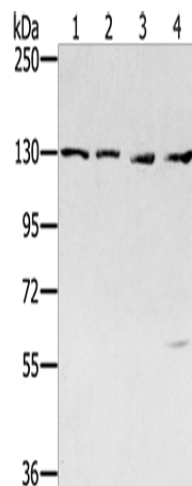
Product data:

Product Type:	Primary Antibodies
Applications:	IHC, WB
Recommended Dilution:	WB: 500-2000 WB positive control: Jurkat, 231, hela and 293T cells IHC: 20-100 Positive control: Human brain Predicted cell location: Cytoplasm or Nucleus
Reactivity:	Human
Host:	Rabbit
Isotype:	IgG
Clonality:	Polyclonal
Immunogen:	Synthetic peptide of human SMC6
Formulation:	pH7.4 PBS, 0.05% NaN ₃ , 40% Glycerol
Concentration:	lot specific
Purification:	Antigen affinity purification
Conjugation:	Unconjugated
Storage:	Store at -20°C.
Stability:	1 year
Predicted Protein Size:	126 kDa
Gene Name:	structural maintenance of chromosomes 6
Database Link:	Entrez Gene 79677 Human Q96SB8
Background:	Structural maintenance of chromosomes protein 6 is a protein that in humans is encoded by the SMC6 gene. Core component of the SMC5-SMC6 complex, a complex involved in DNA double-strand breaks by homologous recombination. The complex may promote sister chromatid homologous recombination by recruiting the SMC1-SMC3 cohesin complex to double-strand breaks.
Synonyms:	FLJ22116; FLJ35534; hSMC6; OTTHUMP00000200490; SMC6L1

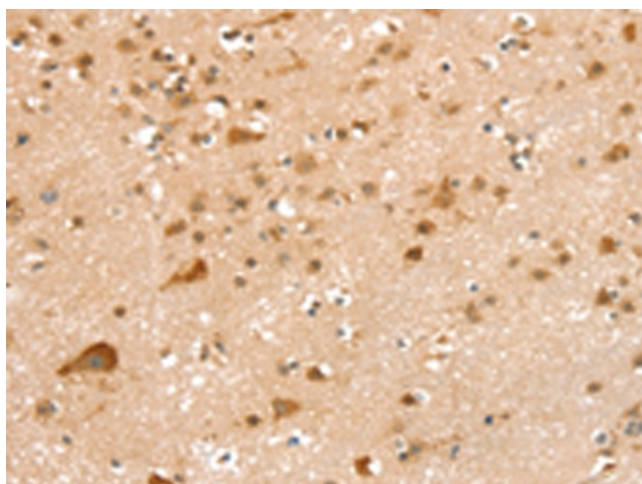


[View online »](#)

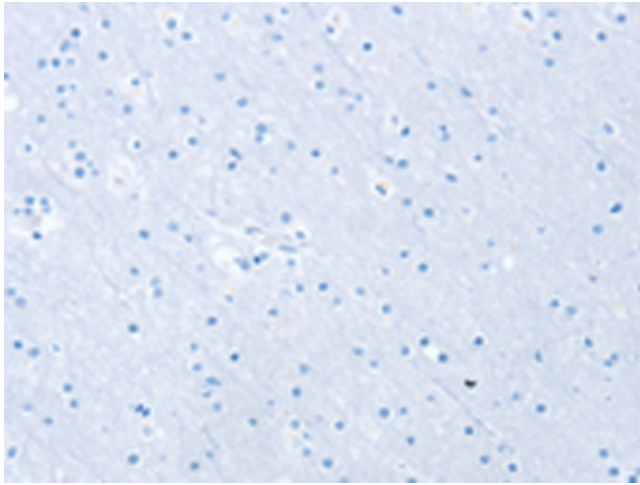
Product images:



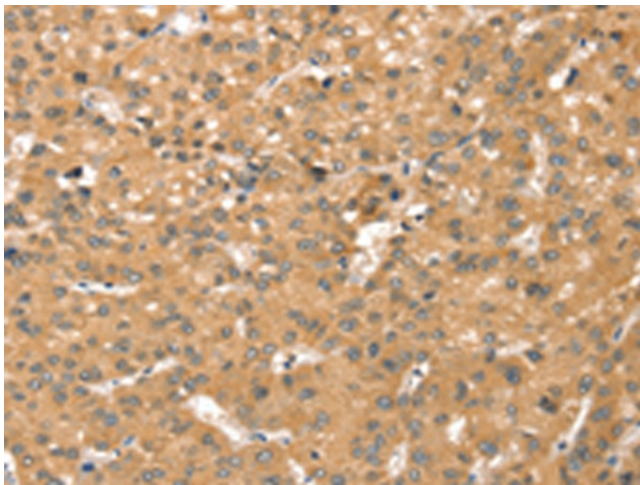
Gel: 6%SDS-PAGE
Lysate: 40 μ g
Lane 1-4: Jurkat cells
231 cells
hela cells
293T cells
Primary antibody: [TA371532] (SMC6 Antibody) at dilution 1/250
Secondary antibody: Goat anti rabbit IgG at 1/8000 dilution
Exposure time: 2 minutes



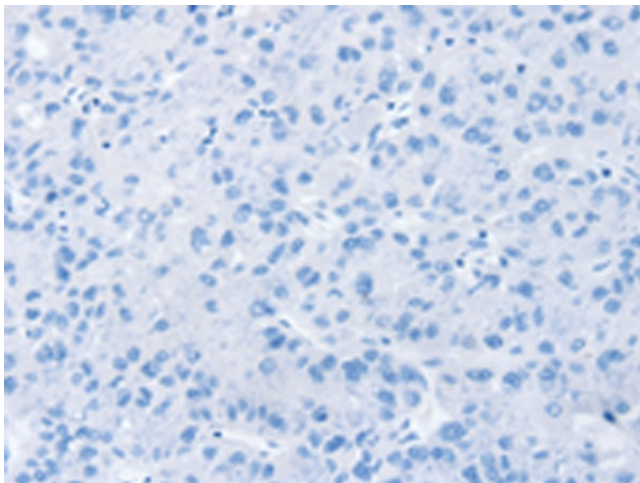
Immunohistochemistry of paraffin-embedded Human brain tissue using [TA371532] (SMC6 Antibody) at dilution 1/20 (Original magnification: \times 200)



Immunohistochemistry of paraffin-embedded Human brain tissue using [TA371532] (SMC6 Antibody) at dilution 1/20, treated with synthetic peptide. (Original magnification: $\times 200$)



Immunohistochemistry of paraffin-embedded Human liver cancer tissue using [TA371532] (SMC6 Antibody) at dilution 1/20 (Original magnification: $\times 200$)



Immunohistochemistry of paraffin-embedded Human liver cancer tissue using [TA371532] (SMC6 Antibody) at dilution 1/20, treated with synthetic peptide. (Original magnification: $\times 200$)