

## Product datasheet for **TA371527S**

### SLC17A1 Rabbit Polyclonal Antibody

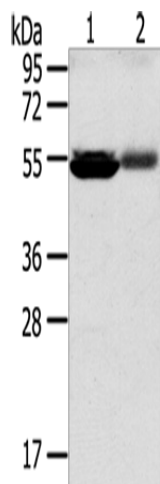
#### Product data:

Product Type:	Primary Antibodies
Applications:	WB
Recommended Dilution:	WB: 500-2000 WB positive control: Human kidney pericarcinous and kidney cancer tissue
Reactivity:	Human
Host:	Rabbit
Isotype:	IgG
Clonality:	Polyclonal
Immunogen:	Synthetic peptide of human SLC17A1
Formulation:	pH7.4 PBS, 0.05% NaN <sub>3</sub> , 40% Glycerol
Concentration:	lot specific
Purification:	Antigen affinity purification
Conjugation:	Unconjugated
Storage:	Store at -20°C.
Stability:	1 year
Predicted Protein Size:	51 kDa
Gene Name:	solute carrier family 17 member 1
Database Link:	<a href="#">Entrez Gene 6568 Human Q14916</a>
Background:	NPT1, also called sodium-dependent phosphate transport protein, belongs to the organic anion transporter family, SLC17A. It is mainly expressed in the kidney transporting small organic anions such as PAH (para-aminohippurate), but it is also found in the liver and brain. NPT1 localizes to the apical membrane of renal proximal tubular cells and functions as a voltage driven organic anion/Cl-exchanger. It also plays a role in maintaining phosphate homeostasis. The expression of NPT1 is transcriptionally regulated by HNF-1 $\alpha$ and HNF-3 $\beta$ . Indomethacin and salicylate inhibit NPT1-mediated PAH transport.
Synonyms:	MGC126794; MGC126796; Na/Pi-4; NAPI-1; NPT-1; NPT1



[View online »](#)

## Product images:



Gel: 8%SDS-PAGE  
Lysate: 60  $\mu$ g  
Lane 1-2: Human kidney pericarcinous tissue  
Human kidney cancer tissue  
Primary antibody: [TA371527] (SLC17A1  
Antibody) at dilution 1/200  
Secondary antibody: Goat anti rabbit IgG at  
1/8000 dilution  
Exposure time: 30 seconds