

Product datasheet for **TA371526S**

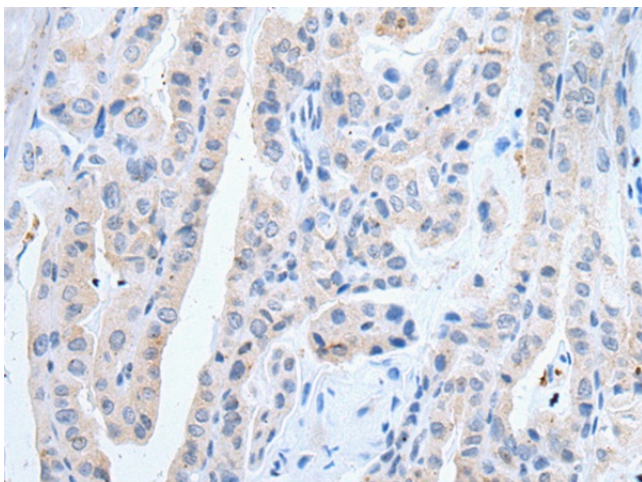
SLCO2B1 Rabbit Polyclonal Antibody

Product data:

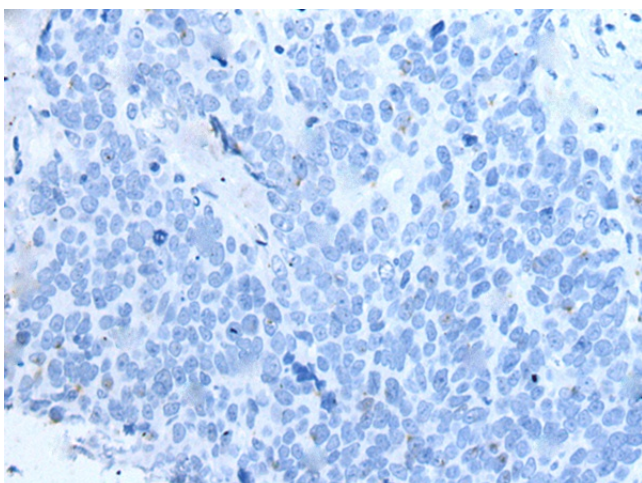
Product Type:	Primary Antibodies
Applications:	IHC
Recommended Dilution:	IHC: 20-100 Positive control: Human thyroid cancer Predicted cell location: Cell membrane
Reactivity:	Human
Host:	Rabbit
Isotype:	IgG
Clonality:	Polyclonal
Immunogen:	Synthetic peptide of human SLCO2B1
Formulation:	pH7.4 PBS, 0.05% NaN ₃ , 40% Glycerol
Concentration:	lot specific
Purification:	Antigen affinity purification
Conjugation:	Unconjugated
Storage:	Store at -20°C.
Stability:	1 year
Gene Name:	solute carrier organic anion transporter family member 2B1
Database Link:	Entrez Gene 11309 Human O94956
Background:	This locus encodes a member of the organic anion-transporting polypeptide family of membrane proteins. The protein encoded by this locus may function in regulation of placental uptake of sulfated steroids. Alternatively spliced transcript variants have been described.
Synonyms:	DKFZp686E0517; KIAA0880; OATP-B; OATP-RP2; OATP2B1; OATPB; OATPRP2; SLC21A9



[View online »](#)

Product images:

Immunohistochemistry of paraffin-embedded Human thyroid cancer tissue using [TA371526] (SLCO2B1 Antibody) at dilution 1/30 (Original magnification: $\times 200$)



Immunohistochemistry of paraffin-embedded Human thyroid cancer tissue using [TA371526] (SLCO2B1 Antibody) at dilution 1/30, treated with synthetic peptide. (Original magnification: $\times 200$)