

Product datasheet for **TA371523**

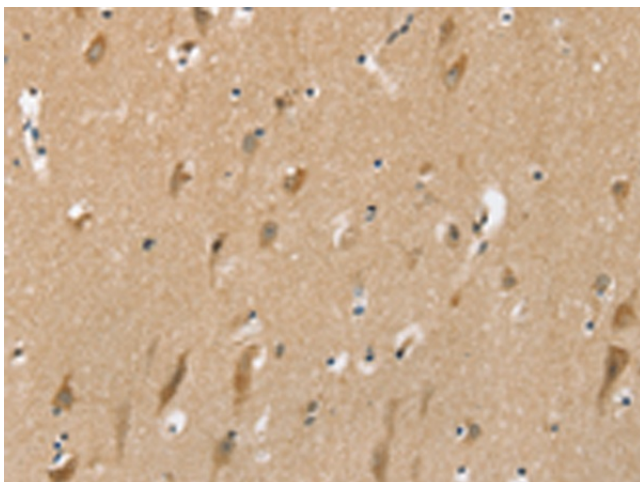
SLC6A7 Rabbit Polyclonal Antibody

Product data:

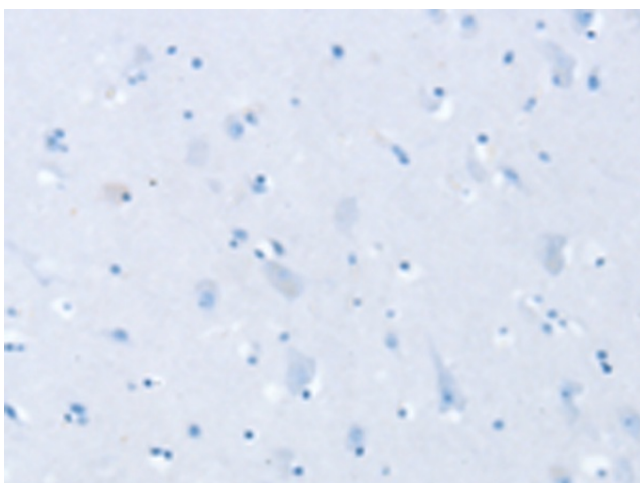
Product Type:	Primary Antibodies
Applications:	IHC
Recommended Dilution:	IHC: 25-100 Positive control: Human brain Predicted cell location: Cytoplasm
Reactivity:	Human, Rat
Host:	Rabbit
Isotype:	IgG
Clonality:	Polyclonal
Immunogen:	Synthetic peptide of human SLC6A7
Formulation:	pH7.4 PBS, 0.05% NaN ₃ , 40% Glycerol
Concentration:	lot specific
Purification:	Antigen affinity purification
Conjugation:	Unconjugated
Storage:	Store at -20°C.
Stability:	1 year
Gene Name:	solute carrier family 6 member 7
Database Link:	Entrez Gene 6534 Human Q99884
Background:	This gene is a member of the gamma-aminobutyric acid (GABA) neurotransmitter gene family and encodes a high-affinity mammalian brain L-proline transporter protein. This transporter protein differs from other sodium-dependent plasma membrane carriers by its pharmacological specificity, kinetic properties, and ionic requirements.
Synonyms:	PROT



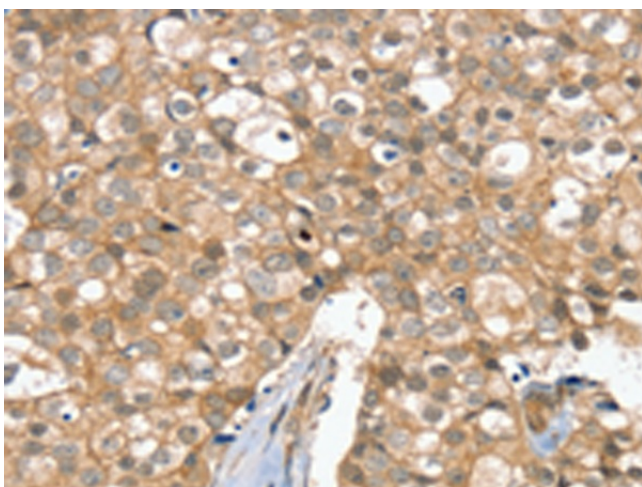
[View online »](#)

Product images:

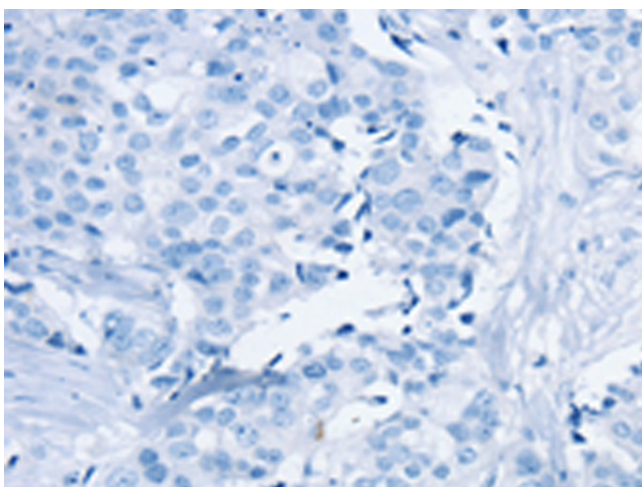
Immunohistochemistry of paraffin-embedded Human brain tissue using TA371523 (SLC6A7 Antibody) at dilution 1/30 (Original magnification: ×200)



Immunohistochemistry of paraffin-embedded Human brain tissue using TA371523 (SLC6A7 Antibody) at dilution 1/30, treated with synthetic peptide. (Original magnification: ×200)



Immunohistochemistry of paraffin-embedded Human breast cancer tissue using TA371523 (SLC6A7 Antibody) at dilution 1/30 (Original magnification: ×200)



Immunohistochemistry of paraffin-embedded Human breast cancer tissue using TA371523 (SLC6A7 Antibody) at dilution 1/30, treated with synthetic peptide. (Original magnification: ×200)