

Product datasheet for **TA371521S**

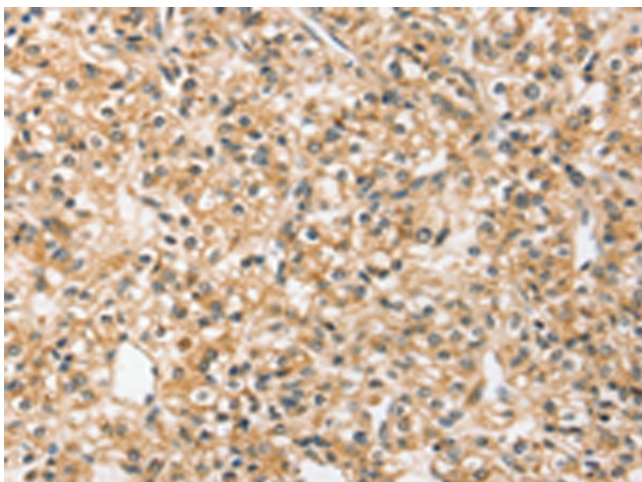
SLC44A2 Rabbit Polyclonal Antibody

Product data:

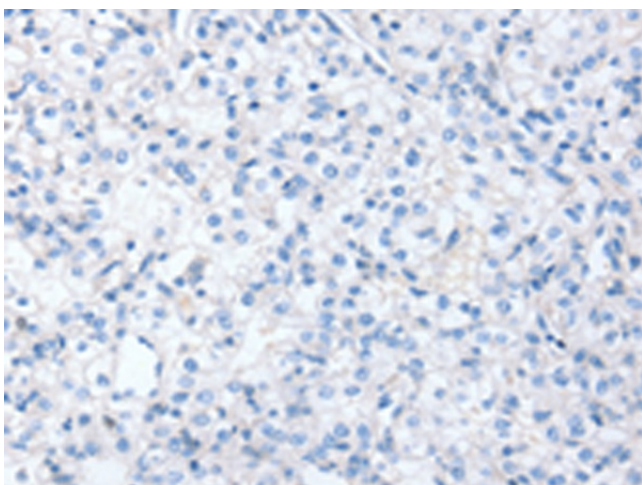
Product Type:	Primary Antibodies
Applications:	IHC
Recommended Dilution:	IHC: 25-100 Positive control: Human prostate cancer Predicted cell location: Cytoplasm or Cell membrane
Reactivity:	Human
Host:	Rabbit
Isotype:	IgG
Clonality:	Polyclonal
Immunogen:	Synthetic peptide of human SLC44A2
Formulation:	pH7.4 PBS, 0.05% NaN ₃ , 40% Glycerol
Concentration:	lot specific
Purification:	Antigen affinity purification
Conjugation:	Unconjugated
Storage:	Store at -20°C.
Stability:	1 year
Gene Name:	solute carrier family 44 member 2
Database Link:	Entrez Gene 57153 Human Q8IWA5
Background:	CTL2, also called SLC44A2 (solute carrier family 44 member 2), is a multi-pass membrane protein expressed in cells of the inner ear. CTL2 is a possible candidate for autoimmune hearing loss in humans. Present in supporting cells of the inner ear (at protein level). Only isoform 3 is expressed in inner ear vestibular tissue.
Synonyms:	CTL2; DKFZp666A071; FLJ44586; PP1292



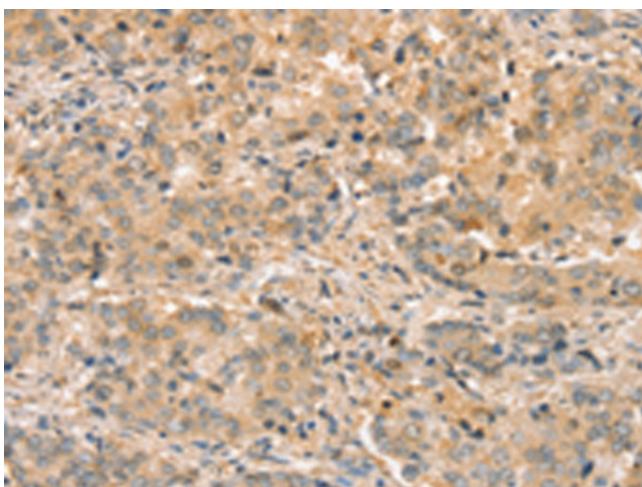
[View online »](#)

Product images:

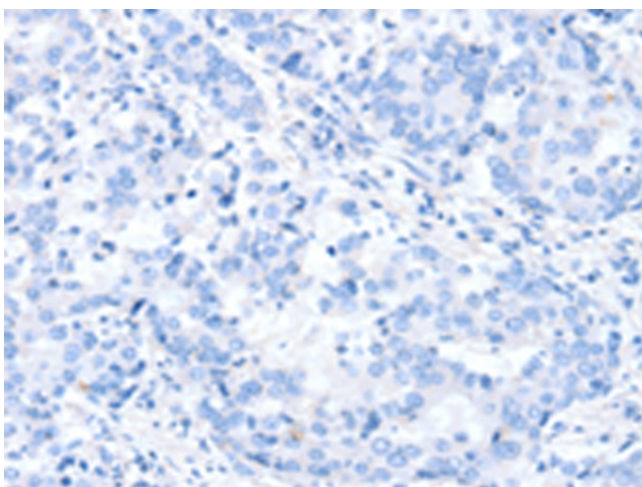
Immunohistochemistry of paraffin-embedded Human prostate cancer tissue using [TA371521] (SLC44A2 Antibody) at dilution 1/20 (Original magnification: $\times 200$)



Immunohistochemistry of paraffin-embedded Human prostate cancer tissue using [TA371521] (SLC44A2 Antibody) at dilution 1/20, treated with synthetic peptide. (Original magnification: $\times 200$)



Immunohistochemistry of paraffin-embedded Human liver cancer tissue using [TA371521] (SLC44A2 Antibody) at dilution 1/20 (Original magnification: $\times 200$)



Immunohistochemistry of paraffin-embedded Human liver cancer tissue using [TA371521] (SLC44A2 Antibody) at dilution 1/20, treated with synthetic peptide. (Original magnification: $\times 200$)