

## Product datasheet for **TA371520**

### SLC41A2 Rabbit Polyclonal Antibody

#### Product data:

Product Type:	Primary Antibodies
Applications:	IHC, WB
Recommended Dilution:	WB: 500-2000 WB positive control: Human lung cancer tissue, Human lung adenocarcinoma tissue, Human liver cancer tissue lysates IHC: 20-100 Positive control: Human liver cancer Predicted cell location: Cytoplasm
Reactivity:	Human, Mouse
Host:	Rabbit
Isotype:	IgG
Clonality:	Polyclonal
Immunogen:	Synthetic peptide of human SLC41A2
Formulation:	pH7.4 PBS, 0.05% NaN <sub>3</sub> , 40% Glycerol
Concentration:	lot specific
Purification:	Antigen affinity purification
Conjugation:	Unconjugated
Storage:	Store at -20°C.
Stability:	1 year
Predicted Protein Size:	62 kDa
Gene Name:	solute carrier family 41 member 2
Database Link:	<a href="#">Entrez Gene 84102 Human Q96JW4</a>



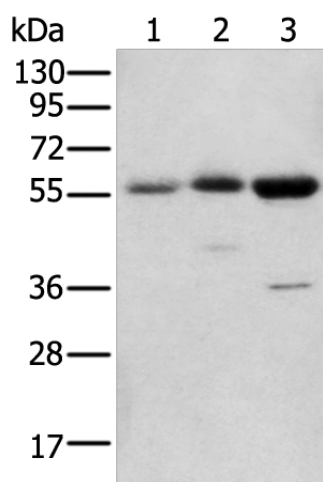
[View online »](#)

**Background:**

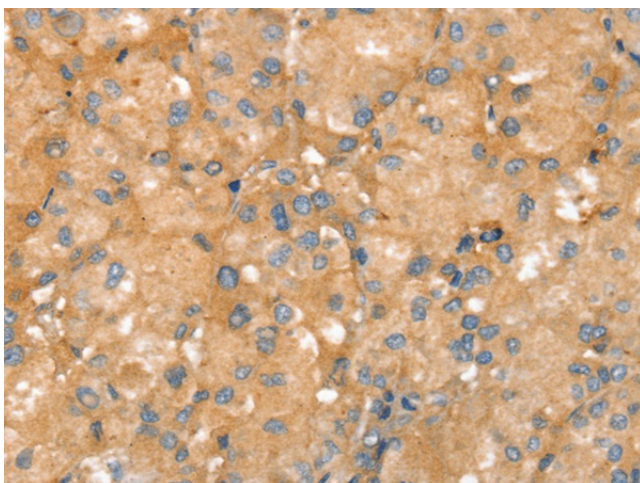
SLC41A2 (solute carrier family 41, member 2), also known as SLC41A1-L, is a 573 amino acid multi-pass membrane protein that belongs to the SLC41A transporter family that includes SLC41A1 and SLC41A3. Expressed in lymphocytes and localizing to the cell membrane, SLC41A2 contains twelve transmembrane domains, three myristoylation sequences, numerous possible phosphorylation sites and a putative N-glycosylation site. SLC41A2 is believed to function as a plasma-membrane magnesium transporter. Magnesium, a cofactor for ATP, plays a vital role in metabolic and biochemical processes. The transport of magnesium across membranes is essential for maintaining magnesium homeostasis and is fundamental to vertebrate metabolism.

**Synonyms:**

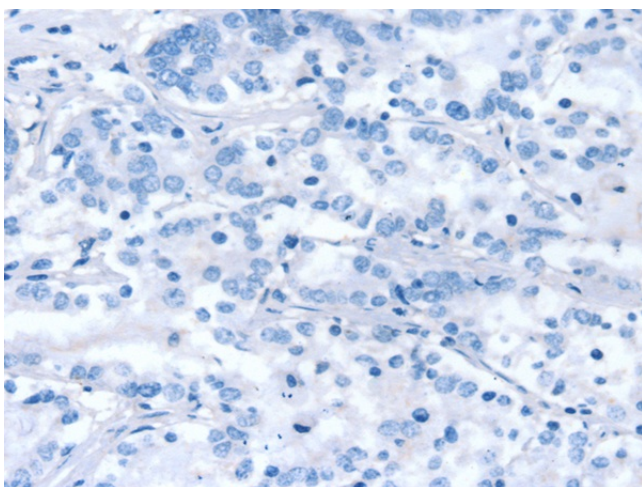
DKFZP434K0427; MGC125330; MGC125331; OTTHUMP00000211172; SLC41A1-L1

**Product images:**

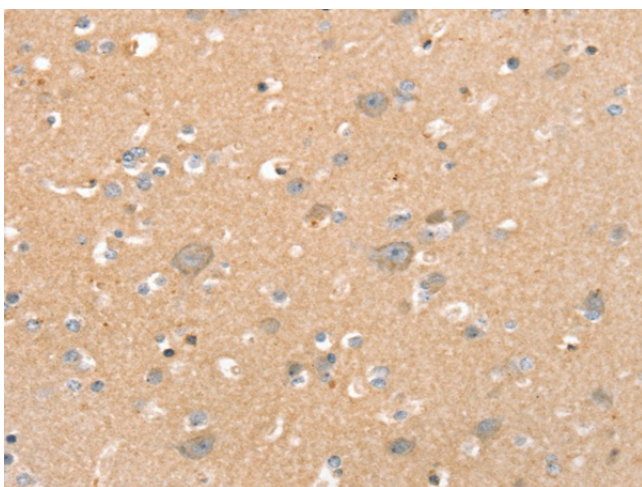
Gel: 8%SDS-PAGE  
Lysate: 40  $\mu$ g  
Lane 1-3: Human lung cancer tissue  
Human lung adenocarcinoma tissue  
Human liver cancer tissue lysates  
Primary antibody: TA371520 (SLC41A2 Antibody)  
at dilution 1/250  
Secondary antibody: Goat anti rabbit IgG at  
1/8000 dilution  
Exposure time: 4 minutes



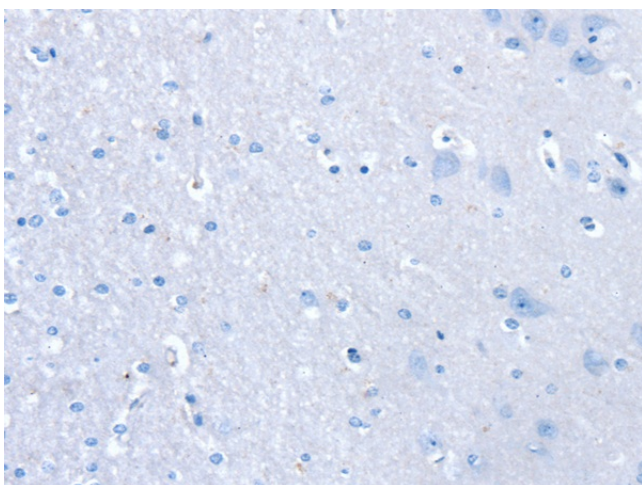
Immunohistochemistry of paraffin-embedded  
Human liver cancer tissue using TA371520  
(SLC41A2 Antibody) at dilution 1/20 (Original  
magnification:  $\times 200$ )



Immunohistochemistry of paraffin-embedded Human liver cancer tissue using TA371520 (SLC41A2 Antibody) at dilution 1/20, treated with synthetic peptide. (Original magnification: ×200)



Immunohistochemistry of paraffin-embedded Human brain tissue using TA371520 (SLC41A2 Antibody) at dilution 1/20 (Original magnification: ×200)



Immunohistochemistry of paraffin-embedded Human brain tissue using TA371520 (SLC41A2 Antibody) at dilution 1/20, treated with synthetic peptide. (Original magnification: ×200)